

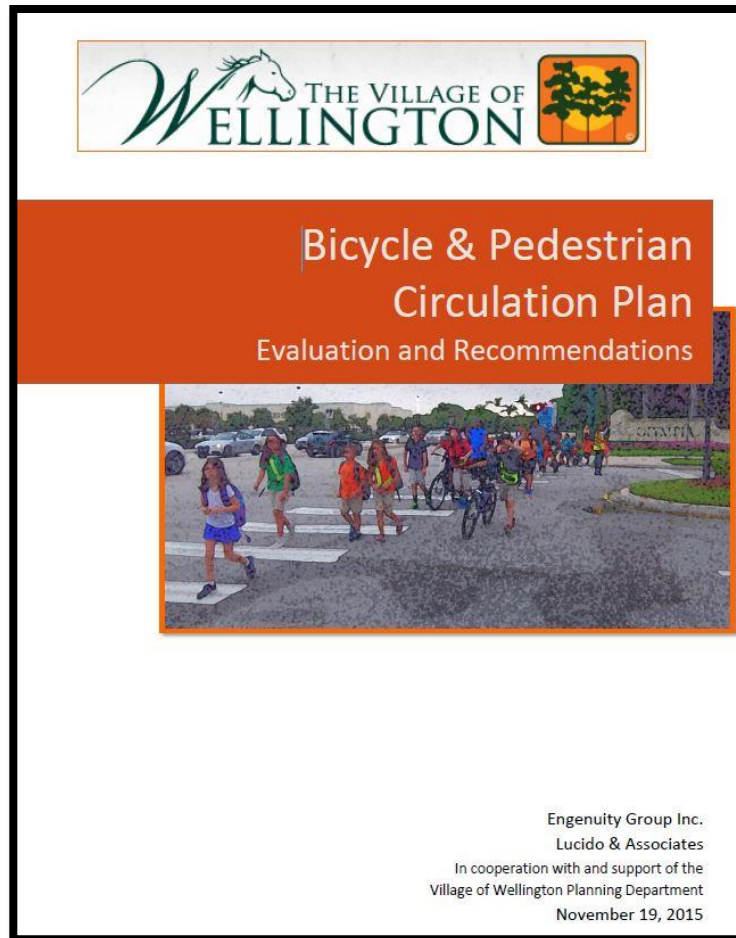
Palm Beach Transportation Planning Agency  
Village of Wellington  
2019 Transportation Alternatives Program Application

# Greenview Shores Bicycle Lanes

# OVERVIEW



# CIRCULATION PLAN



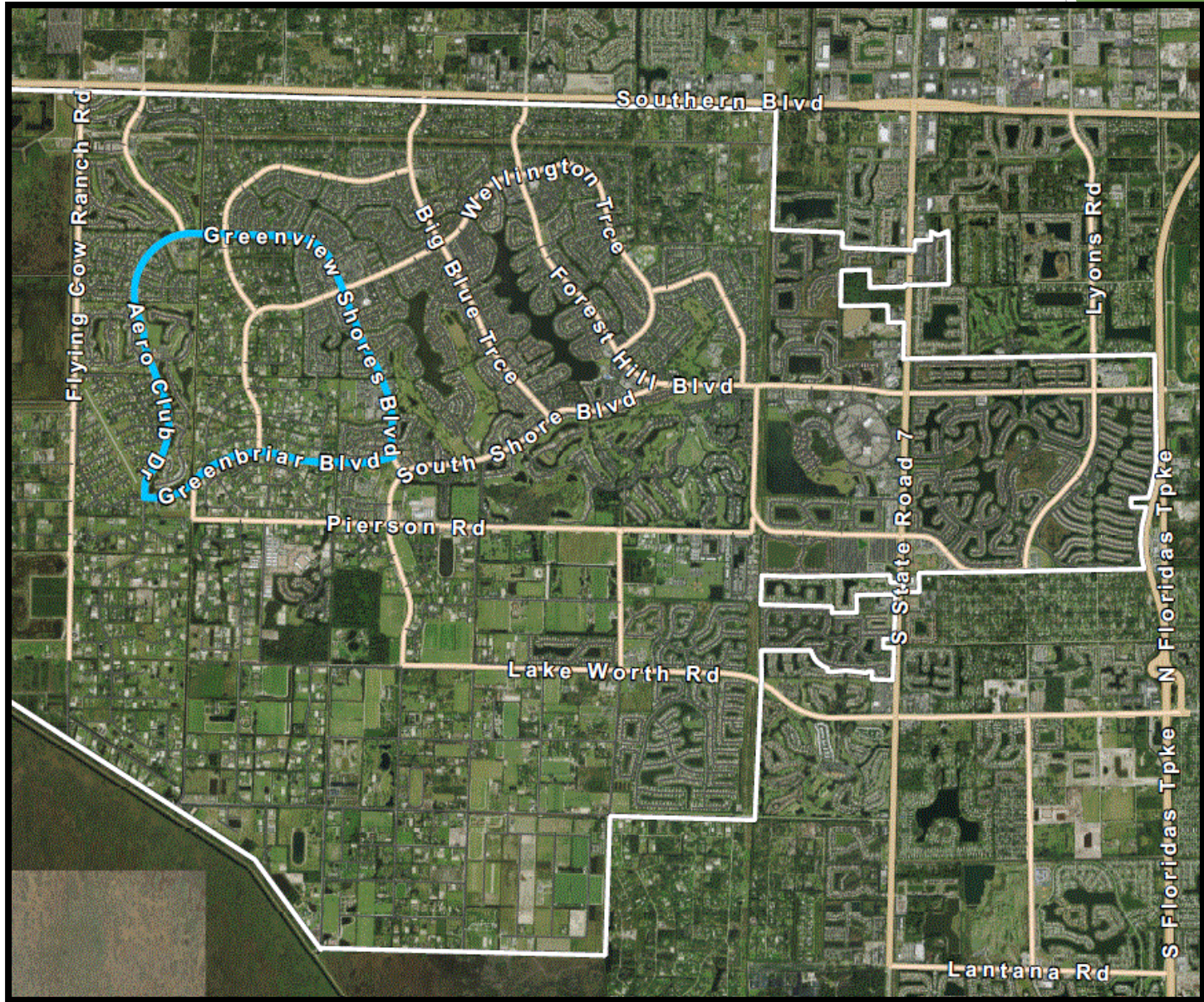


# TA Project Limits





# Wellington Bike Loop - 6.4 Miles





# Improves Non-Motorized Safety

- ▶ Creates over one-mile of designated bike lanes on both sides of Greenview Shores
- ▶ Provides an alternative transportation option to the existing 8' pathways



# Improves Safety & Convenience for Non-Motorized Users

Greenview Shores gets a lot of bicycle traffic, particularly from children commuting to and from Wellington Landings Middle School



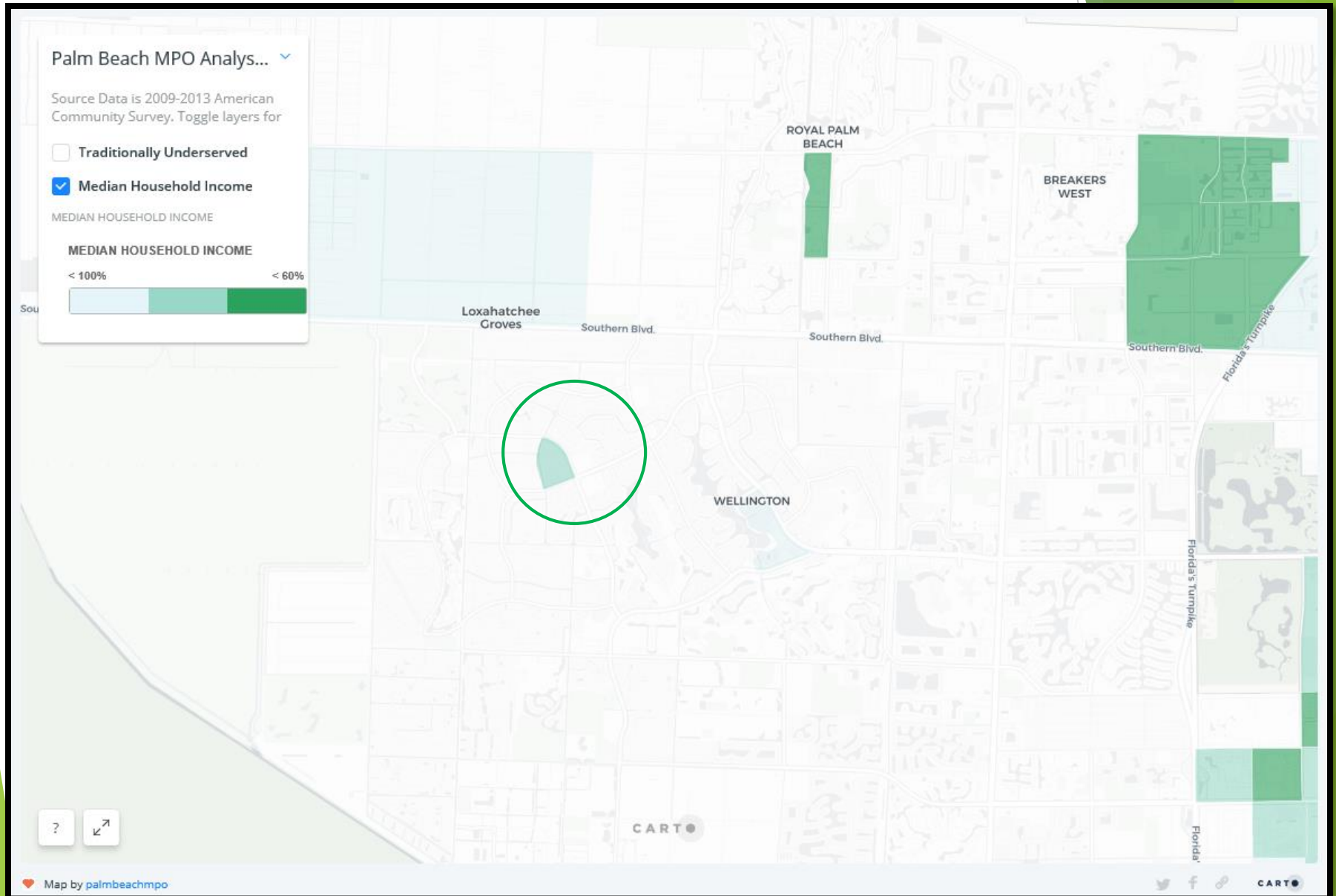
# Maximizes TPA Funds

- ▶ Local implementation via Local Agency Program (LAP) Agreement

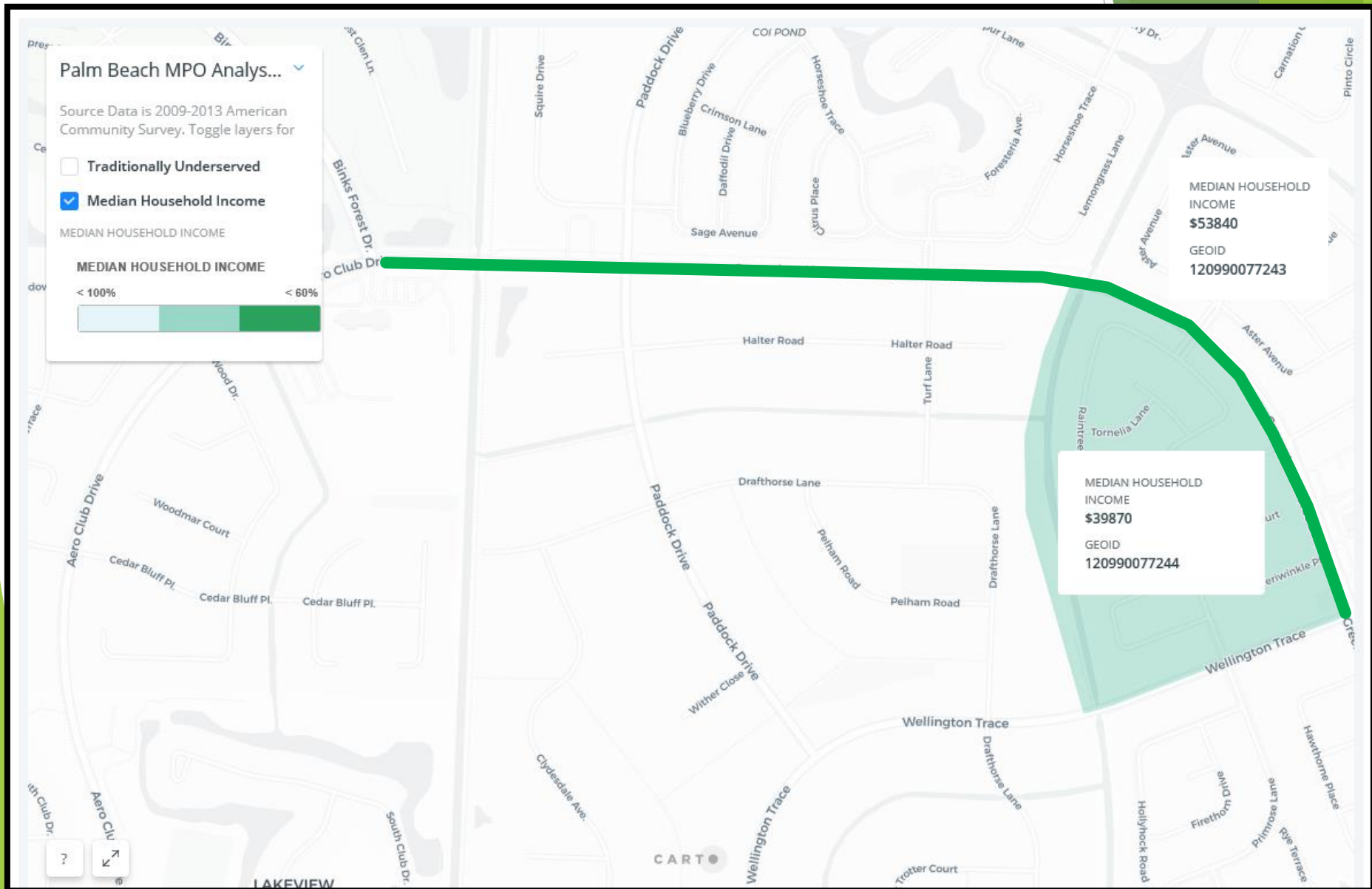




# Equity - Median Income

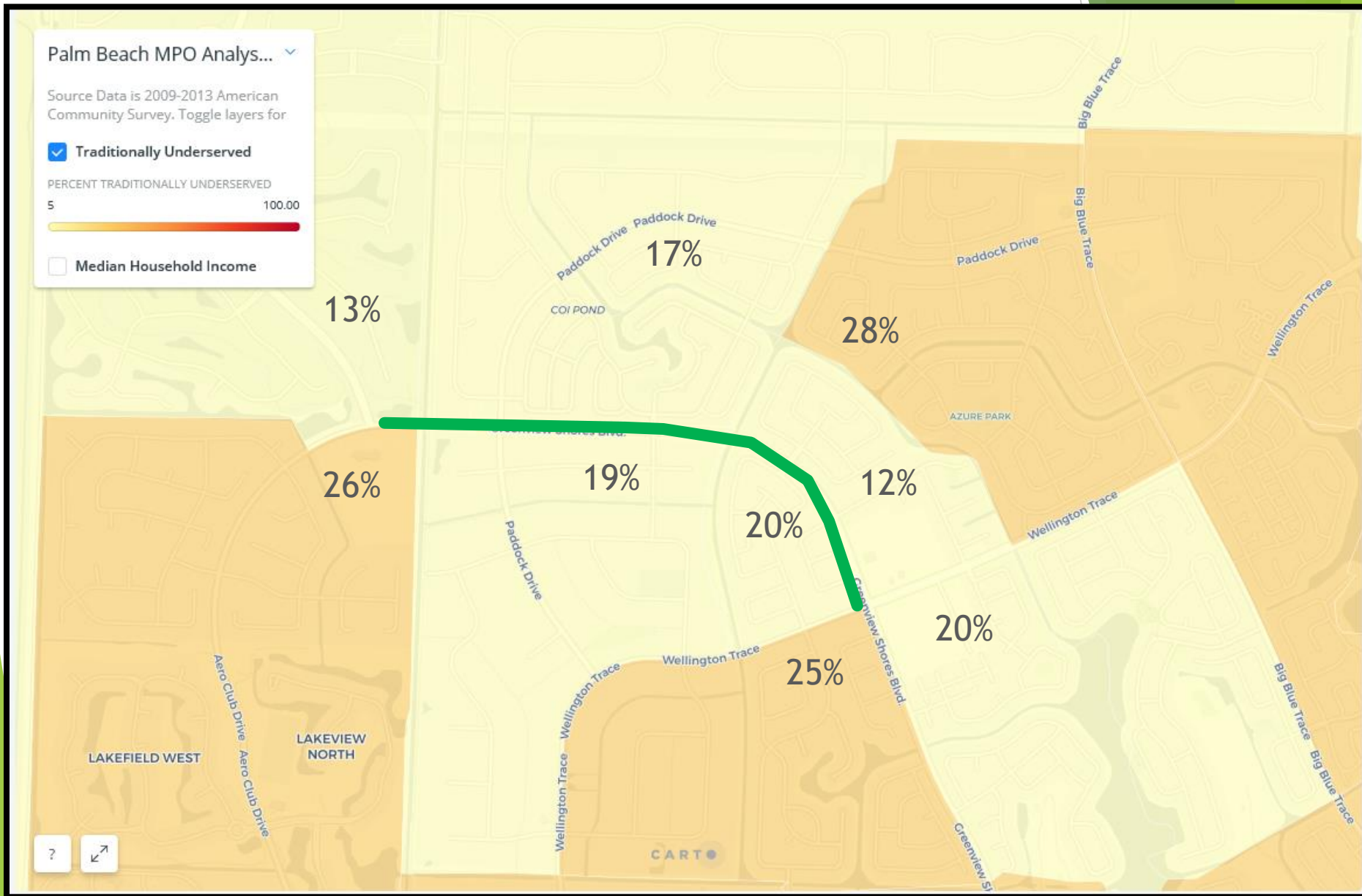


# Equity - Median Income





# Equity - Traditionally Underserved



# Local Support

- ⦿ Wellington Runners Club
- ⦿ Local Cycling Groups
- ⦿ Fitness and Bicycle Businesses
- ⦿ Wellington's Village Council
- ⦿ Residents Turnout for Public Input
- ⦿ Community Wide Surveys

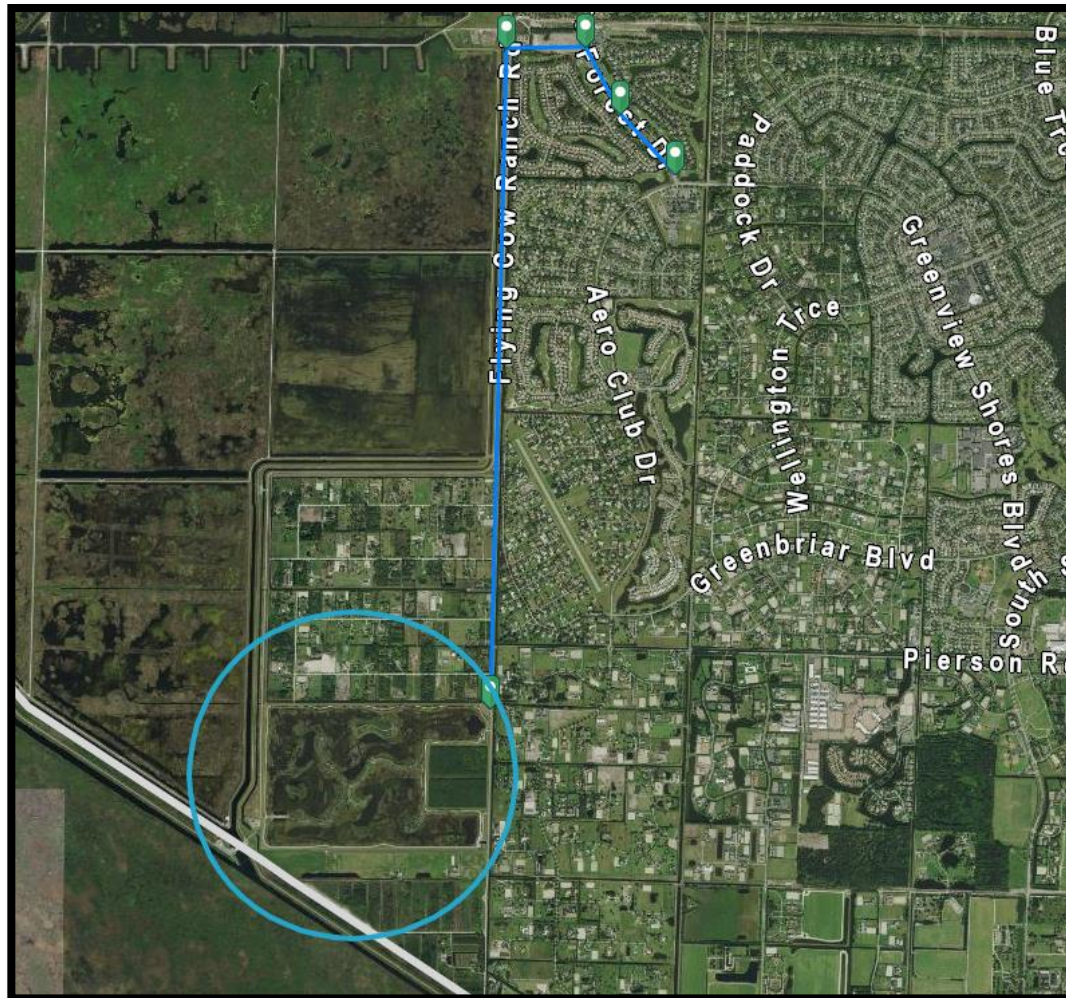


# Environmental

- Providing bicycle lanes promotes alternative travel methods which can reduce pollution created by automobile traffic.
- Bicycle lanes will promote alternative fuel (no fuel) modes of transportation.

# Non-Motorized Connectors

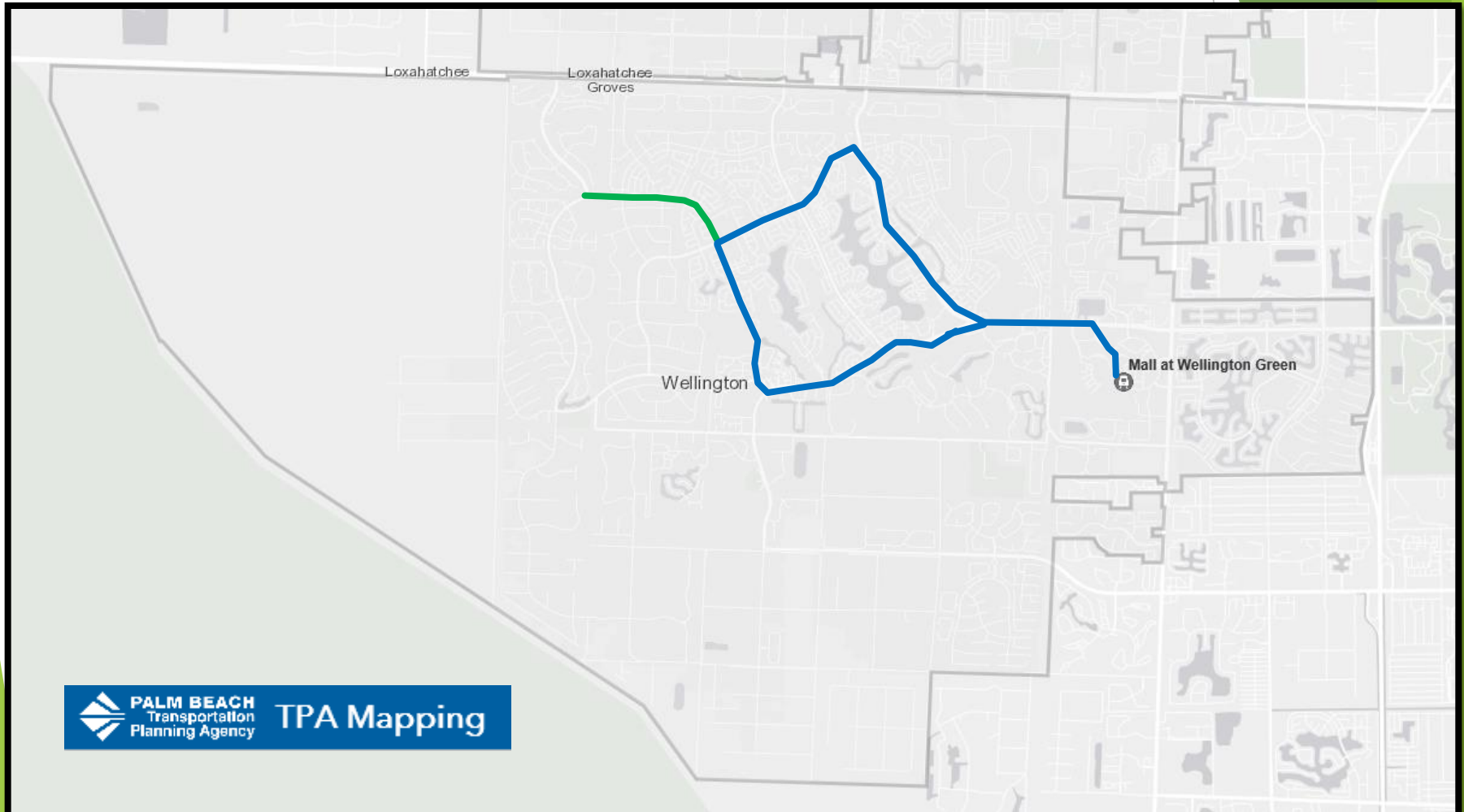
- The project is located approximately four miles from the Wellington Environmental Preserve



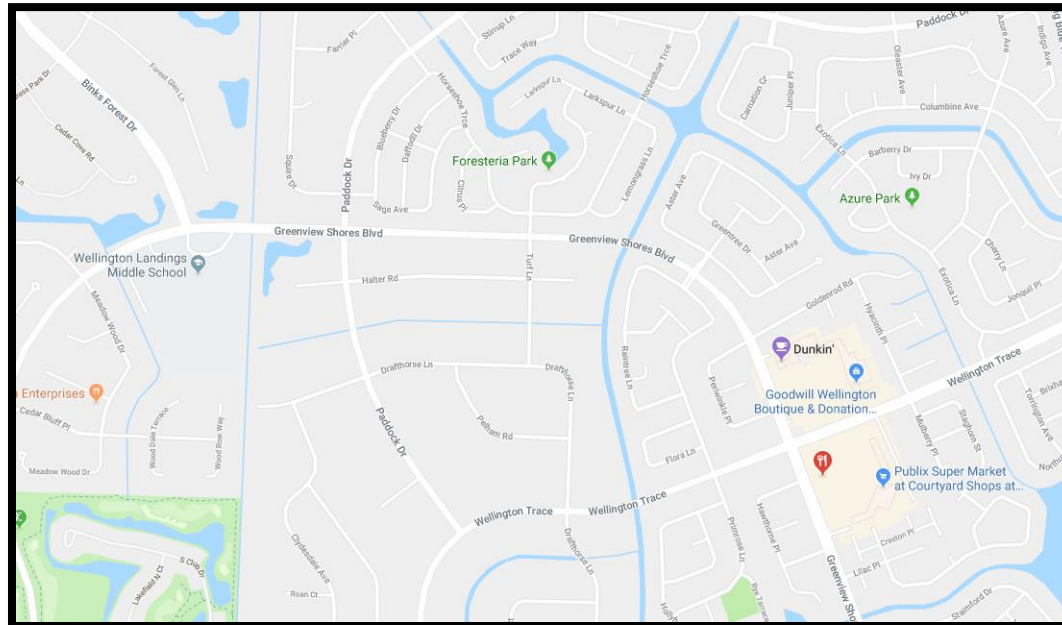


# Efficient Transit

- The project improves access to the Wellington Green Mall Transit Hub



# Proximity Benefit





# GRANT FUNDING

- ▶ Asphalt Bike Lane Extensions
- ▶ Baserock Base (8")
- ▶ Type B Stabilization (12")
- ▶ Grading
- ▶ Pavement Striping
- ▶ Pavement Symbols, Bicycle markings
- ▶ Reflective Pavement Markers
- ▶ Signage (approximately 8 signs)
- ▶ Mobilization, General Conditions

Estimated Construction Cost - \$1,187,239

# Questions or Comments?

## Thank you



Ryan Harding, AICP  
Planner - Village of Wellington  
[rharding@wellingtonfl.gov](mailto:rharding@wellingtonfl.gov)