



# School Hazardous Walking Conditions

October 2018

# House Bill 41 “Gabby’s Law for Student Safety”

- Updated to include MPOs in the School Hazardous Walking Conditions analysis process
- TPA has completed analysis of all 107 Palm Beach County Public Elementary Schools



# F.S. 1006.23 - Hazardous Walking Conditions

- Within 2 miles of School and Attendance Boundary
- An area at least 4 feet wide having a surface upon which students may walk
- Crossings where the traffic volume on the road exceeds the rate of 360 vphpd
- Crossings where the total traffic volume on the road exceeds 4,000 vehicles per hour through an intersection

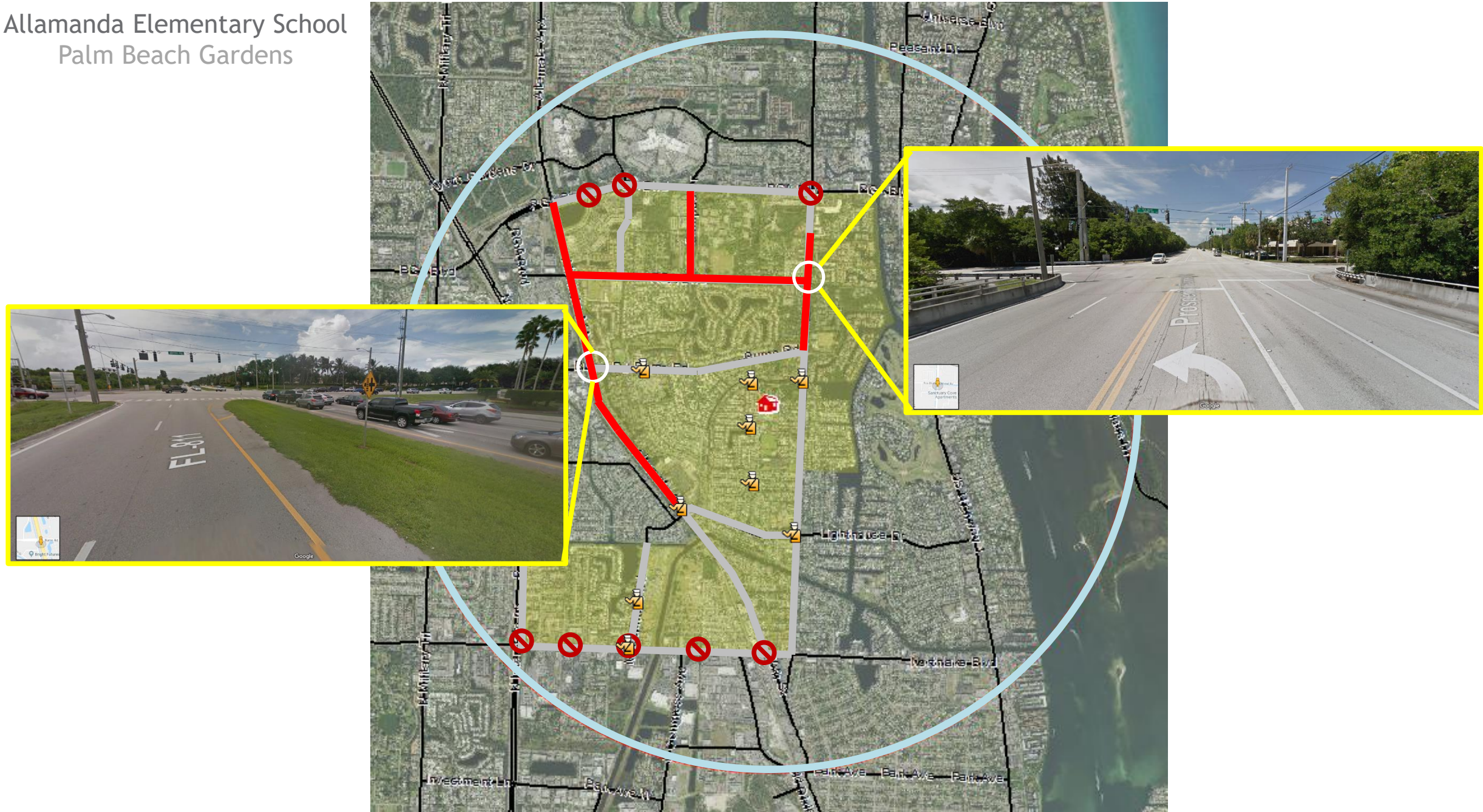
# Profile Review

- Allamanda Elementary School
  - Palm Beach Gardens, Florida
- Barton Elementary School
  - Lake Worth, Florida
- Sandpiper Shores Elementary School
  - Boca Raton, Florida





Allamanda Elementary School  
Palm Beach Gardens









Sandpiper Shores  
Elementary School  
Boca Raton



# Next Steps

- Meet with PBC School District to review profiles and confirm findings and determine next steps
- Work with schools and local partners to **plan**, **prioritize** and **fund** projects to fix hazardous walking conditions



# Thank You!

Alyssa Frank

[AFrank@PalmBeachTPA.org](mailto:AFrank@PalmBeachTPA.org)

561-478-5744

