



PALM BEACH
Transportation Planning Agency

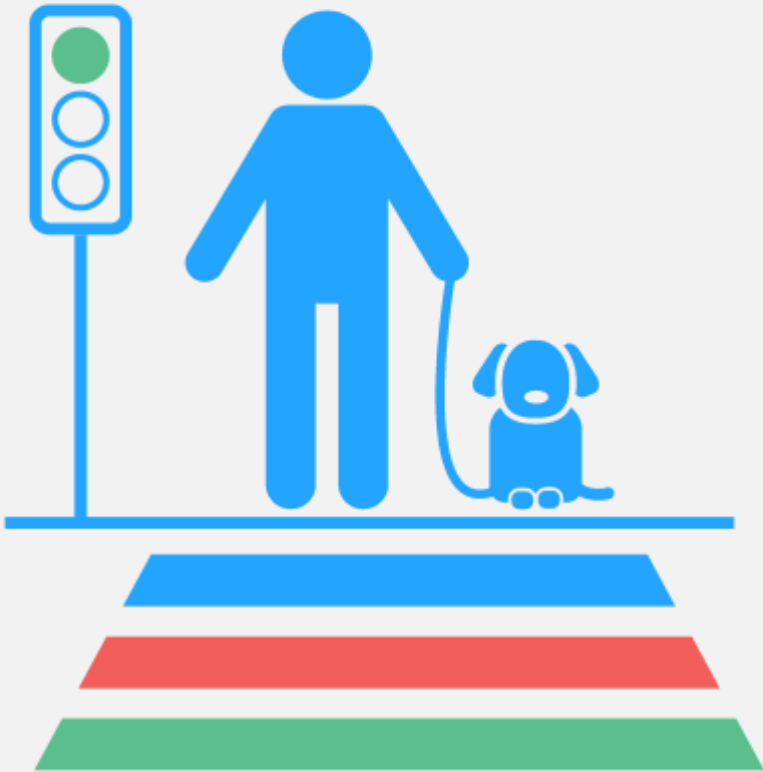
VISION ZERO

ACTION PLAN



TPA Advisory Committees | December 5, 2018

AGENDA



- ❑ Why Vision Zero?
- ❑ What is Vision Zero?
- ❑ Palm Beach Trends
- ❑ Action Plan Timeline
- ❑ Next Steps

TPA VISION ZERO ACTION PLAN – The Mission

Establish a comprehensive, data-driven approach to eliminating traffic-related fatalities and serious injuries in Palm Beach County.



SAFER STREETS VISION

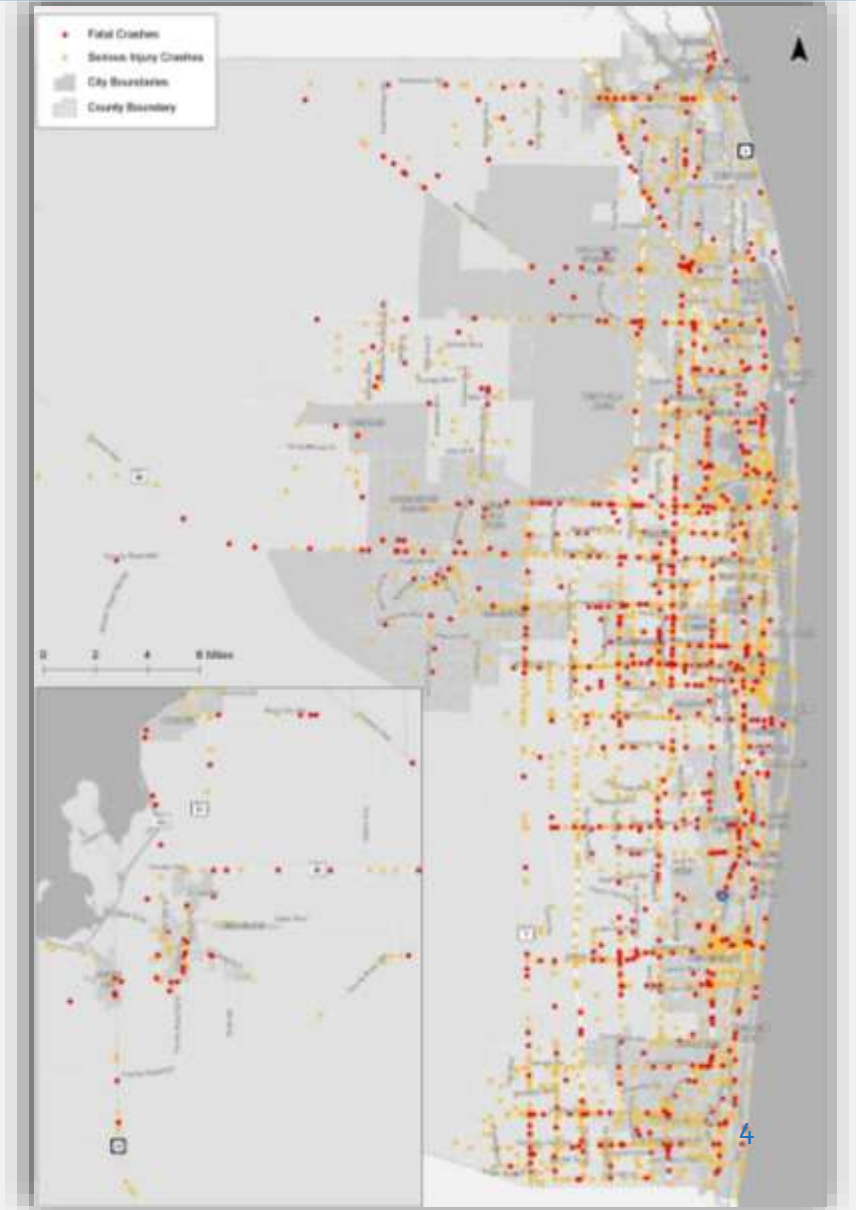


VISION ZERO

WHY a VISION ZERO ACTION PLAN?

In Palm Beach County, between 2011 and 2017:

- There were **6,760** fatality and serious injury crashes.
- Over **25%** of all fatalities and serious injuries were bicyclists and pedestrians.
- **13%** of all fatality and serious injury crashes involved motorcyclists.
- **16%** of all fatality and serious injury crashes were caused by impaired drivers.



TPA VISION ZERO ACTION PLAN

VISION

Eliminate traffic-related fatalities and serious injuries in Palm Beach County

GOALS

- Develop a data-driven decision-making framework for reducing fatalities and serious injuries by identifying targeted countermeasures.
- Develop measurable action items to monitor progress toward Vision Zero.
- Align with Vision Zero partners to drive down fatalities and serious injuries towards an ultimate vision of zero.

WHAT IS VISION ZERO?



WHAT IS VISION ZERO?

Vision Zero Cities

A Vision Zero City meets the following minimum standards:

- Sets clear goal of eliminating traffic fatalities and severe injuries
- Mayor has publicly, officially committed to Vision Zero
- Vision Zero plan or strategy is in place, or Mayor has committed to doing so in clear time frame
- Key city departments (including Police, Transportation and Public Health) are engaged.



Updated
January 2018

VISION ZERO Best Practices – The Pillars

PROMOTE AWARENESS

INTEGRATE SOCIAL EQUITY

MAINTAIN MULTI-AGENCY COORDINATION

ESTABLISH REGULAR MONITORING

VISION ZERO Best Practices – The Stats



NEW YORK CITY

32%

REDUCTION IN PEDESTRIAN FATALITIES



SAN FRANCISCO

33%

REDUCTION IN TOTAL FATALITIES



MONTGOMERY
COUNTY, MD

19%

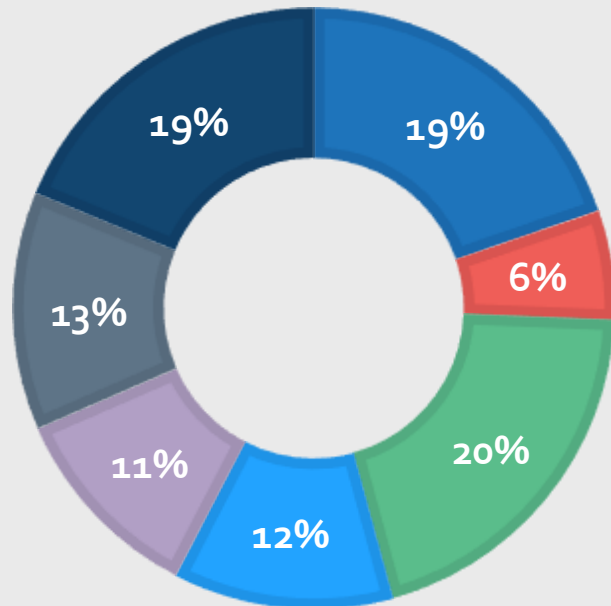
REDUCTION IN ALL CRASHES

PALM BEACH TRENDS – Population & Driver Age

Population = 1.4 Million

POPULATION BY AGE GROUP

- 14 & Under
- 15-19
- 20-29
- 30-39
- 40-49
- 50-64
- 65 & Older



7% OF ALL DRIVERS WERE

15-19 YEAR OLDS



15% OF ALL DRIVERS WERE OVER

65 YEARS OLD

OTHER DRIVER AGE GROUPS

Age	Percent of All Drivers
20-29	24%
30-39	17%
40-49	16%
50-64	21%

PALM BEACH TRENDS – Commute Trends



45% of the Total Population are Workers 16 Years Old and Over



94% ARE COMMUTERS



MODE SHARE*

SERIOUS INJURIES & DEATHS



PEDESTRIAN

1.5%

14%



BICYCLE

0.7%

6%



MOTORCYCLE

1.4%

11%



CAR

88.2%

74%

MEAN TRAVEL TIME TO WORK



25.2
MINUTES

PALM BEACH TRENDS



TIME OF DAY

25%

HAPPENED DURING PM PEAK HOURS
BETWEEN 3:00 pm and 6:00 pm



LIGHTING
CONDITIONS

60%

HAPPENED DURING THE DAY



ROAD
CONDITIONS

87%

HAPPENED DURING DRY ROAD
CONDITIONS



LANE
DEPARTURE

33%

WERE EITHER RUN-OFF-THE ROAD,
SIDESWIPE, OR HEAD-ON COLLISIONS

Palm Beach Trends – Driver Behavior



In the
US

In 2016, speeding
killed over **10,000**
people.
Over **10,000** were
killed by drunk drivers.

IN PALM
BEACH
COUNTY

42%



Speeding &
Aggressive Driving-
Related

16%



Impaired
Driving-
Related



In the
US

Distracted Driving

84%+

RECOGNIZE THE DANGER OF
CELL PHONE DISTRACTIONS

36%

ADMITTED TO TEXTING
WHILE DRIVING ANYWAY

[AAA Foundation for Traffic Safety]

Distracted
driving crashes are

**UNDER-
REPORTED**

¹⁴
[National Safety Council]

PEDESTRIANS



Between 2011 and 2017: 946 pedestrians were killed

- ❑ That is **14%** of All Fatalities & Serious Injuries.
- ❑ **22%** were hit at intersections, **38%** at mid-blocks.
- ❑ **22%** were 65+ Years Old, **16%** were 19 Years old or Younger.
- ❑ **18%** were in low-income neighborhoods, **19%** in minority areas.

BICYCLISTS



Between 2011 and 2017: **425 bicyclists** were killed

- ❑ That is **11%** of All Fatalities & Serious Injuries.
- ❑ **34%** were hit at intersections, **10%** in bike lanes.
- ❑ **13%** were 65+ Years Old, **15%** were 19 Years old or Younger.
- ❑ **12%** were in low-income neighborhoods, **10%** were in minority areas.

MOTORCYCLISTS



Between 2011 and 2017: **794** Motorcyclists were involved in fatal or serious injury crashes

- ❑ That is **13%** of All Fatality & Serious Injury crashes.
- ❑ **42%** occurred at intersections.
- ❑ **37%** occurred on arterials.
- ❑ **35%** occurred due to careless driving or failing to yield to right of way.

TIMELINE

SEPTEMBER
Kickoff

SEPTEMBER-OCTOBER
Data Analysis

NOVEMBER
VZST Meeting #1

DECEMBER-JANUARY
Action Plan
Development

JANUARY
VZST Meeting #2



2018

NOVEMBER-
DECEMBER
Priority Areas &
Countermeasures
Development

DECEMBER
TPA Board and
Committee
Meeting #1:
Trends

2019

FEBRUARY
TPA Board and
Committee Meeting #2:
2019 Safety Targets &
Draft Plan

MARCH
Final Action Plan

NEXT STEPS

- ❑ Presentation to the TPA Board
- ❑ Priority Locations
- ❑ Countermeasures
- ❑ Action Plan Development

THANK YOU!

