



**PALM BEACH**  
**Transportation Planning Agency**

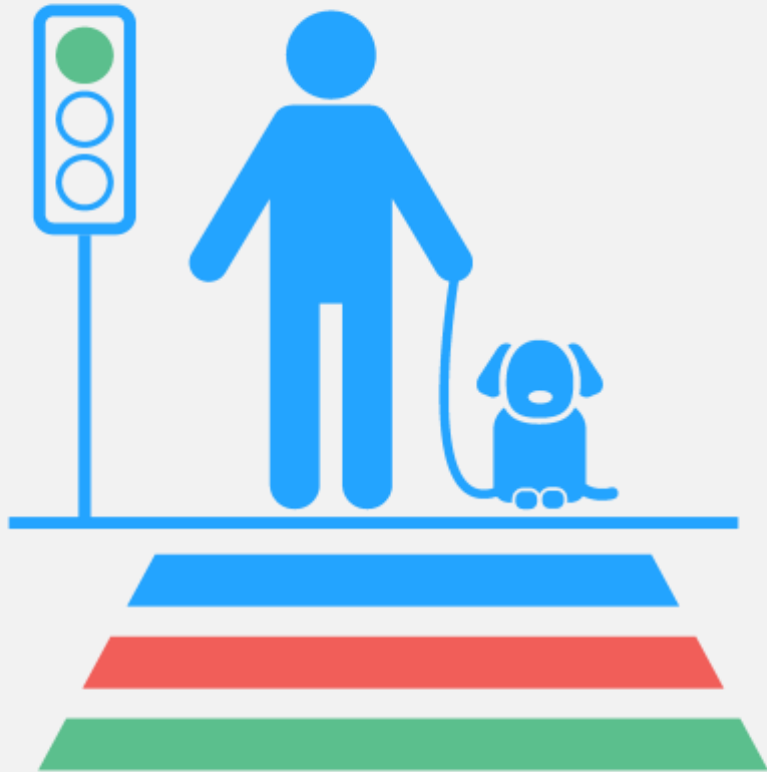
**VISION ZERO**

**ACTION PLAN**



Citizens Advisory Committee | December 5, 2018

# AGENDA



- ❑ Why Vision Zero?
- ❑ What is Vision Zero?
- ❑ Palm Beach Trends
- ❑ Action Plan Timeline
- ❑ Next Steps

# TPA VISION ZERO ACTION PLAN – The Mission

Establish a comprehensive, data-driven approach to eliminating traffic-related fatalities and serious injuries in Palm Beach County.



SAFER STREETS VISION

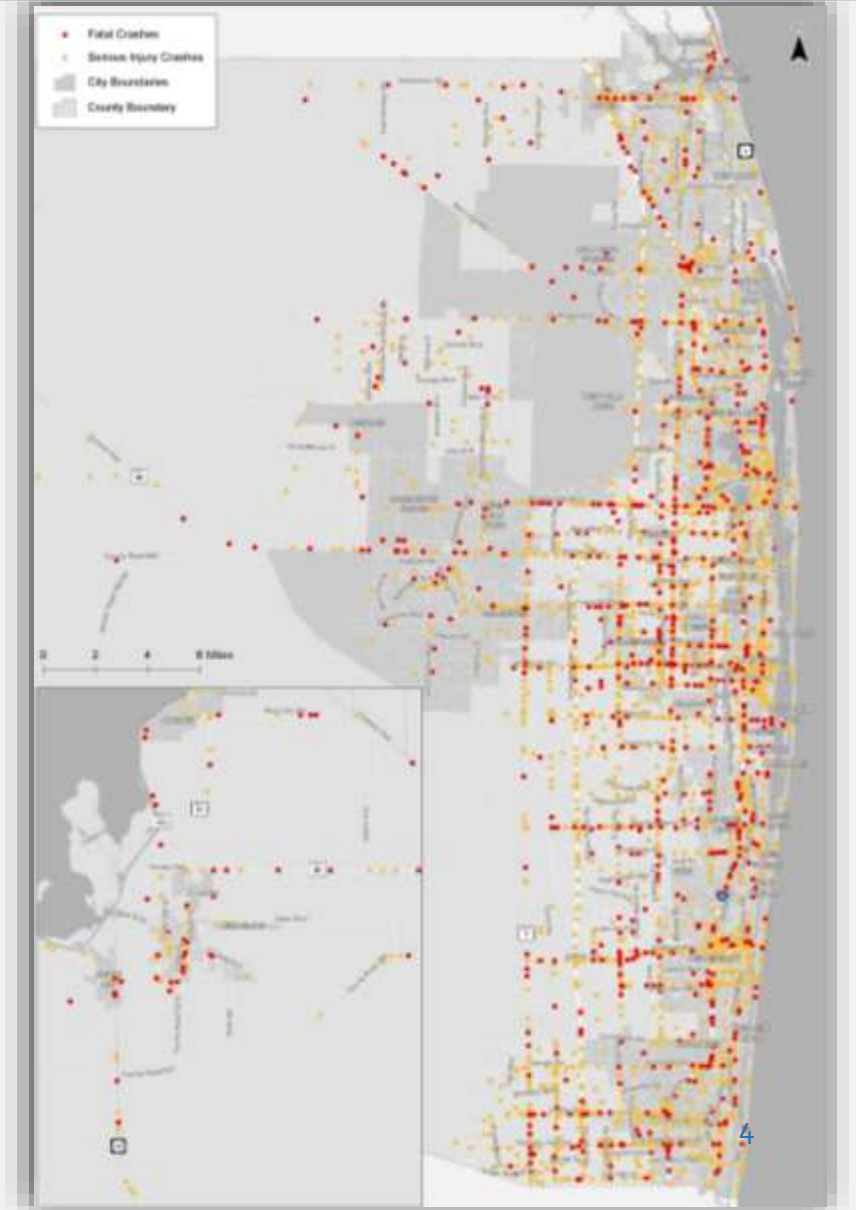


VISION ZERO

# WHY a VISION ZERO ACTION PLAN?

In Palm Beach County, between 2011 and 2017:

- There were **6,760** fatality and serious injury crashes.
- Over **25%** of all fatalities and serious injuries were bicyclists and pedestrians.
- **13%** of all fatality and serious injury crashes involved motorcyclists.
- **16%** of all fatality and serious injury crashes were caused by impaired drivers.



# TPA VISION ZERO ACTION PLAN

## VISION

**Eliminate** traffic-related fatalities and serious injuries in Palm Beach County

## GOALS

- Develop a data-driven decision-making framework for reducing fatalities and serious injuries by identifying targeted countermeasures.
- Develop measurable action items to monitor progress toward Vision Zero.
- Align with Vision Zero partners to drive down fatalities and serious injuries towards an ultimate vision of zero.

# WHAT IS VISION ZERO?



# WHAT IS VISION ZERO?

## Vision Zero Cities

A Vision Zero City meets the following minimum standards:

- Sets clear goal of eliminating traffic fatalities and severe injuries
- Mayor has publicly, officially committed to Vision Zero
- Vision Zero plan or strategy is in place, or Mayor has committed to doing so in clear time frame
- Key city departments (including Police, Transportation and Public Health) are engaged.



Updated  
January 2018

# VISION ZERO Best Practices – The Pillars

**PROMOTE AWARENESS**

**INTEGRATE SOCIAL EQUITY**

**MAINTAIN MULTI-AGENCY COORDINATION**

**ESTABLISH REGULAR MONITORING**



# VISION ZERO Best Practices – The Stats



NEW YORK CITY

**32%**

REDUCTION IN PEDESTRIAN FATALITIES



SAN FRANCISCO

**33%**

REDUCTION IN TOTAL FATALITIES



MONTGOMERY  
COUNTY, MD

**19%**

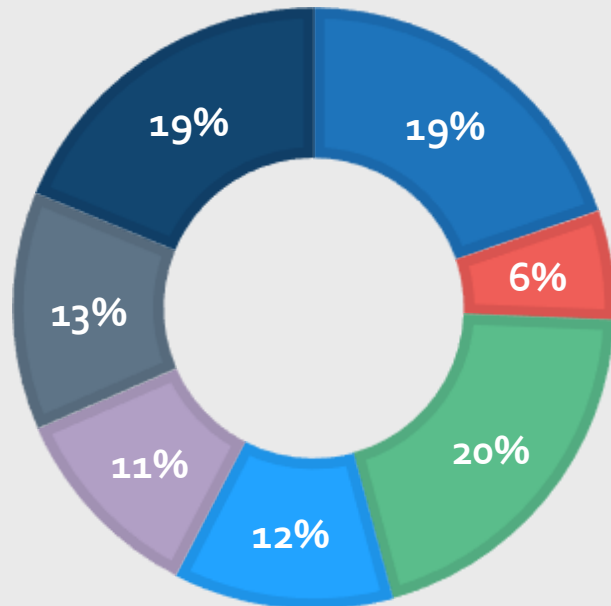
REDUCTION IN ALL CRASHES

# PALM BEACH TRENDS – Population & Driver Age

Population = 1.4 Million

## POPULATION BY AGE GROUP

- 14 & Under
- 15-19
- 20-29
- 30-39
- 40-49
- 50-64
- 65 & Older



**7%** OF ALL DRIVERS WERE

**15-19** YEAR OLDS



**15%** OF ALL DRIVERS WERE OVER

**65** YEARS OLD

## OTHER DRIVER AGE GROUPS

Age	Percent of All Drivers
20-29	24%
30-39	17%
40-49	16%
50-64	21%

# PALM BEACH TRENDS – Commute Trends







**45%** of the Total Population are Workers 16 Years Old and Over



**94%** ARE COMMUTERS



	MODE SHARE*	SERIOUS INJURIES & DEATHS
 PEDESTRIAN	<b>1.5%</b>	<b>14%</b>
 BICYCLE	<b>0.7%</b>	<b>6%</b>
 MOTORCYCLE	<b>1.4%</b>	<b>11%</b>
 CAR	<b>88.2%</b>	<b>74%</b>

MEAN TRAVEL TIME TO WORK



**25.2**  
MINUTES

# PALM BEACH TRENDS



TIME OF DAY

25%

HAPPENED DURING PM PEAK HOURS  
BETWEEN 3:00 pm and 6:00 pm



LIGHTING  
CONDITIONS

60%

HAPPENED DURING THE DAY



ROAD  
CONDITIONS

87%

HAPPENED DURING DRY ROAD  
CONDITIONS



LANE  
DEPARTURE

33%

WERE EITHER RUN-OFF-THE ROAD,  
SIDESWIPE, OR HEAD-ON COLLISIONS

# Palm Beach Trends – Driver Behavior



In the  
**US**

In 2016, speeding  
killed over **10,000**  
people.  
Over **10,000** were  
killed by drunk drivers.

IN PALM  
BEACH  
COUNTY

**42%**



Speeding &  
Aggressive Driving-  
Related

**16%**



Impaired  
Driving-  
Related



In the  
**US**

Distracted Driving

**84%+**

RECOGNIZE THE DANGER OF  
CELL PHONE DISTRACTIONS

**36%**

ADMITTED TO TEXTING  
WHILE DRIVING ANYWAY

[AAA Foundation for Traffic Safety]

Distracted  
driving crashes are

**UNDER-  
REPORTED**

<sup>13</sup>  
[National Safety Council]

# PEDESTRIANS



Between 2011 and 2017: **946** pedestrians were killed

- ❑ That is **14%** of All Fatalities & Serious Injuries.
- ❑ **22%** were hit at intersections, **38%** at mid-blocks.
- ❑ **22%** were 65+ Years Old, **16%** were 19 Years old or Younger.
- ❑ **18%** were in low-income neighborhoods, **19%** in minority areas.

# BICYCLISTS



Between 2011 and 2017: **425 bicyclists** were killed

- ❑ That is **11%** of All Fatalities & Serious Injuries.
- ❑ **34%** were hit at intersections, **10%** in bike lanes.
- ❑ **13%** were 65+ Years Old, **15%** were 19 Years old or Younger.
- ❑ **12%** were in low-income neighborhoods, **10%** were in minority areas.

# MOTORCYCLISTS



Between 2011 and 2017: **794** Motorcyclists were involved in fatal or serious injury crashes

- ❑ That is **13%** of All Fatality & Serious Injury crashes.
- ❑ **42%** occurred at intersections.
- ❑ **37%** occurred on arterials.
- ❑ **35%** occurred due to careless driving or failing to yield to right of way.



# TIMELINE

SEPTEMBER  
Kickoff

SEPTEMBER-OCTOBER  
Data Analysis

NOVEMBER  
VZST Meeting #1

DECEMBER-JANUARY  
Action Plan  
Development

JANUARY  
VZST Meeting #2



2018

NOVEMBER-  
DECEMBER  
Priority Areas &  
Countermeasures  
Development

DECEMBER  
TPA Board and  
Committee  
Meeting #1:  
Trends

2019

FEBRUARY  
TPA Board and  
Committee Meeting #2:  
2019 Safety Targets &  
Draft Plan

MARCH  
Final Action Plan

# NEXT STEPS

- ❑ Presentation to the TPA Board
- ❑ Priority Locations
- ❑ Countermeasures
- ❑ Action Plan Development



# THANK YOU!

