



**Mobility Management Program:  
Section 5310 Enhanced Mobility  
of Seniors & Individuals with  
Disabilities**



**Regional Mobility Management Facilitators  
Presentation:  
Corine Farguson & Jayson Babel**

-  
**Palm Beach Local Coordination Board  
March 8, 2017**

# FORMAT

- RECAP
- OVERVIEW OF ACTIVITY
- GOALS AND PERFORMANCE MEASURES
- SITUATIONAL APPRAISAL
- NEXT STEPS
- QUESTIONS

# RECAP

FTA's definition of mobility management involves:

- Short range **planning**;
- **Management activities**; and,
- **Projects**:
  - For **improving coordination** among public transportation and other transportation service providers
  - With **intent of expanding the availability of service**

# OUR FOCUS

- Improved Mobility
- Increased Access
- Expanded Capacity
- Support the CTCs and Transit Agencies in their mission

# PARTNERS



# OVERVIEW OF ACTIVITY

- Establish team
- Meet with partners
- Goals - Performance measures
- Situational appraisal
- Work-plan

# OVERVIEW OF ACTIVITY

- Establish team
- Meet with partners
- Goals - Performance measures
- Situational appraisal
- Work-plan



# OVERVIEW OF ACTIVITY

- Establish team
- **Meet with partners**
- Goals - Performance measures
- Situational appraisal
- Work-plan

# PARTNER OUTREACH

- LIST AGENCIES SPOKEN TO:
  - Agency for Persons with Disabilities
  - Commission Transportation Disadvantaged
  - Florida Department of Transportation
  - Palm Beach - MPO
  - Palm Beach - CTC
  - South Florida Commuter Services
  - Safe Mobility for Seniors Resource

# OVERVIEW OF ACTIVITY

- Establish team
- Meet with partners
- **Goals - Performance measures**
- Situational appraisal
- Work-plan

# GOALS - PERFORMANCE MEASURES

## MISSION STATEMENT

The Mobility Management Facilitation Program at Ann Storck Center is focused on improving coordinated transportation systems for seniors and individuals with disabilities within Broward and Palm Beach Counties.

# GOALS - PERFORMANCE MEASURES

- Reviewed the Transportation Disadvantaged Service Plan
- Identified the Goals listed that Ann Storck Center can support
- Developed Preliminary Goals and Performance Measures

# GOALS - PERFORMANCE MEASURES

## GOAL 1 –

Increase coordination amongst  
Community Transportation  
Coordinators, stakeholders and  
other transportation providers

# GOALS - PERFORMANCE MEASURES

## GOAL 2 –

Increase the effective and efficient delivery of transportation services for seniors & individuals with disabilities

# GOALS - PERFORMANCE MEASURES

## GOAL 3 –

Increase the utilization of the system by seniors & individuals with disabilities

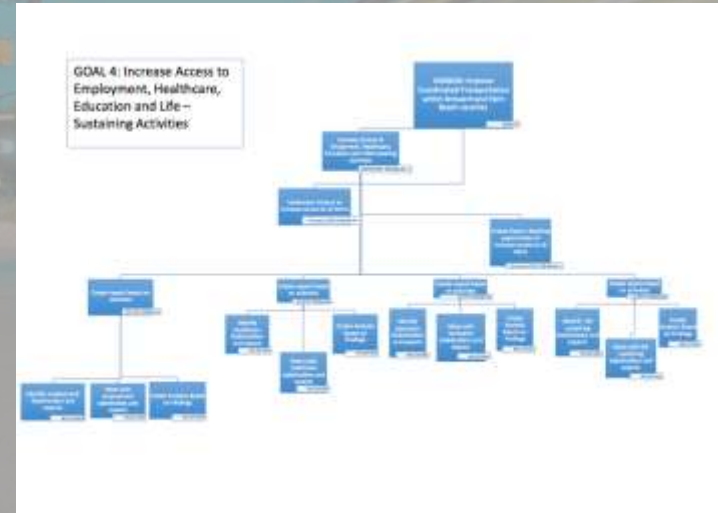
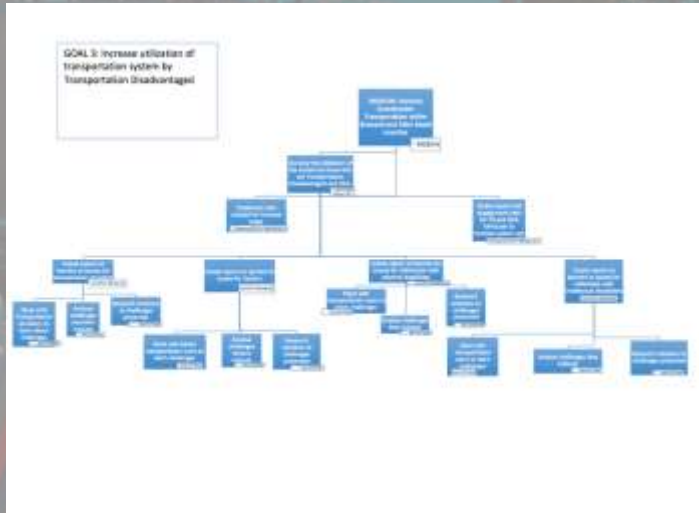
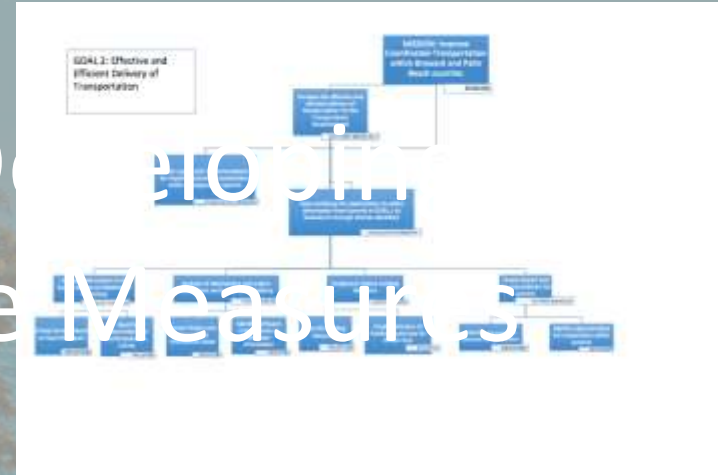
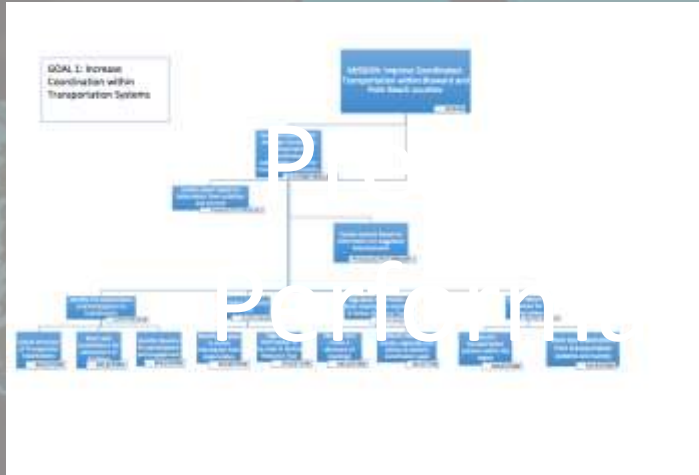


# GOALS - PERFORMANCE MEASURES

## GOAL 4 –

Increase safe access to Employment, Healthcare, Education and Life Sustaining Activities through transportation systems for seniors & individuals with disabilities

# GOALS - PERFORMANCE MEASURES



# Transportation Barriers

- Financial considerations
- Geographical concerns
- Reporting requirements
- Agency cooperation
- Varying interpretations of rules and regulations
- Land use development
- Jurisdictional boundaries

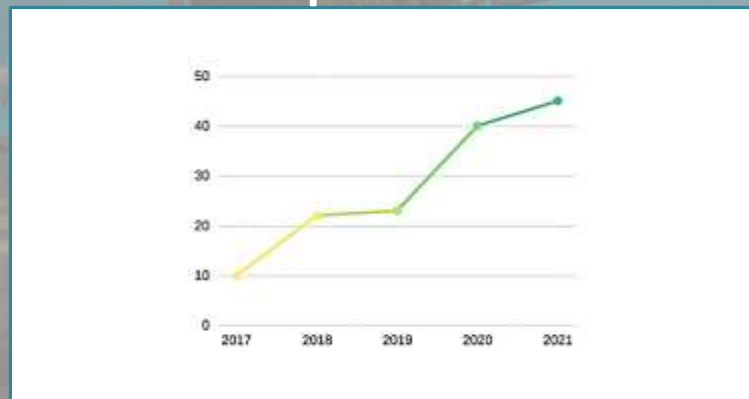
# OVERARCHING GOAL

Successful coordination!

More service provided for the same expense.

OR

Same level of service provided with reduced expense .



If neither outcome is realized then coordination is not an appropriate business strategy.

# OVERVIEW OF ACTIVITY

- Establish team
- Meet with partners
- Goals - Performance measures
- **Situational appraisal**
- Work-plan

# SITUATIONAL APPRAISAL



## Palm Beach County Situational Appraisal

### Mobility Management Facilitator Program

Mobility Management Facilitators will work with regional stakeholders to address mobility for individuals with disabilities and the aging population, by increasing their access to healthcare, employment, education, and other life-sustaining activities.



Ann Storck Center, Inc.

DRAFT SITUATIONAL APPRAISAL QUESTIONNAIRE



- Local Coordination Board
- Community Transportation Coordinators
- FDOT
- CTD
- MPO
- Other Key Stakeholders

Forge new or borrow from established initiatives



# METHODOLOGY

## Stakeholders:

- Service providers
- Coordinated Contractors
- Potential Coordinated Contractors
- Human Services Agencies
- Transportation Vendors
- Individuals
- Advocacy Groups



SurveyMonkey®



MailChimp

Q. WHAT CAN I DO?



# SITUATIONAL APPRAISAL

- COMMENT
- SHARE
- CONNECT
- OTHER INITIATIVES
- PERTINENT INFORMATION

# TIMELINE FOR SITUATIONAL APPRAISALS



# OVERVIEW OF ACTIVITY

- Establish team
- Meet with partners
- Goals - Performance measures
- Situational appraisal
- **Work-plan**

# NEXT STEPS

March 8 - 15 Finalize SIT. APP.(s)

March 15 - 30 Preliminary Surveys

March 15 - 30 Let US...CONNECT!

March 30 - Finalize Work Plan

March 30 - Initiate

# NEXT STEPS

Working with Palm Tran Connection  
on...



- Functional Assessment Options for ADA riders

- South Florida Commuter Services Options

# NEXT STEPS

- Present findings from situational appraisal
- Create Summit for stakeholders to address the common themes and begin proposed solutions



Taco  
Bord  
Taco  
Bord

# QUESTIONS?



# CONTACT US

**CORINE FARGUSON, MPA**  
Mobility Management Facilitator  
Regional Mobility Management  
Facilitation Program – Broward &  
Palm Beach

Ann Storck Center, Inc.

Email: [cfarguson@annstorckcenter.org](mailto:cfarguson@annstorckcenter.org)

Tel: (954) 584-8000 Ext: 376

**JAYSON BABEL**

Mobility Management Facilitator – PM  
Regional Mobility Management  
Facilitation Program – Broward & Palm  
Beach

Ann Storck Center, Inc.

Email: [jbabel@annstorckcenter.org](mailto:jbabel@annstorckcenter.org)

Tel: (954) 584-8000 Ext: 375

**General: [MobilityManagement@annstorckcenter.org](mailto:MobilityManagement@annstorckcenter.org)**