



NOV. 19, 2017



**Boca Raton II Tri-Rail Station  
PD&E Study and 30% Documents  
Palm Beach TPA Committee Meetings**

**December 6 and 7, 2017  
Vista Center**

# Agenda

- Introduction
- Feasible Station Locations
- Station Concept Plans
- Schedule
- What's Next

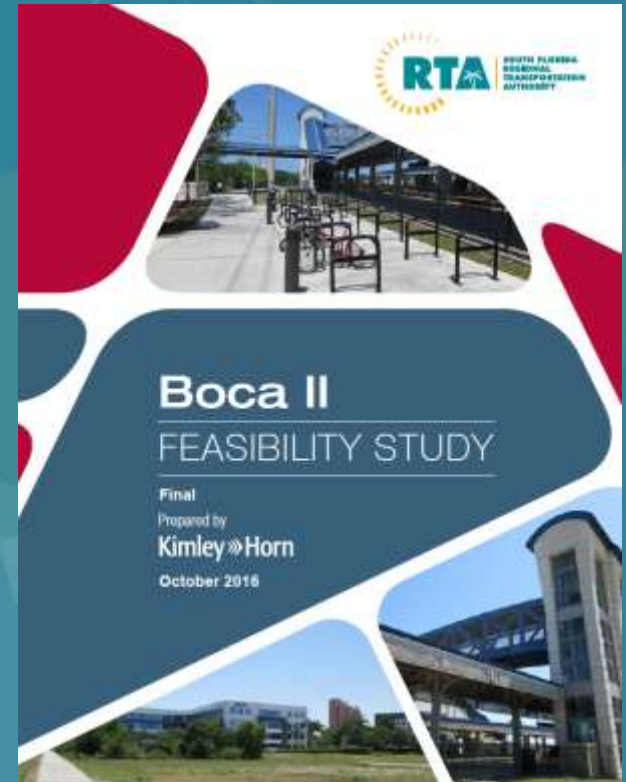


# Partner Stakeholder Agencies



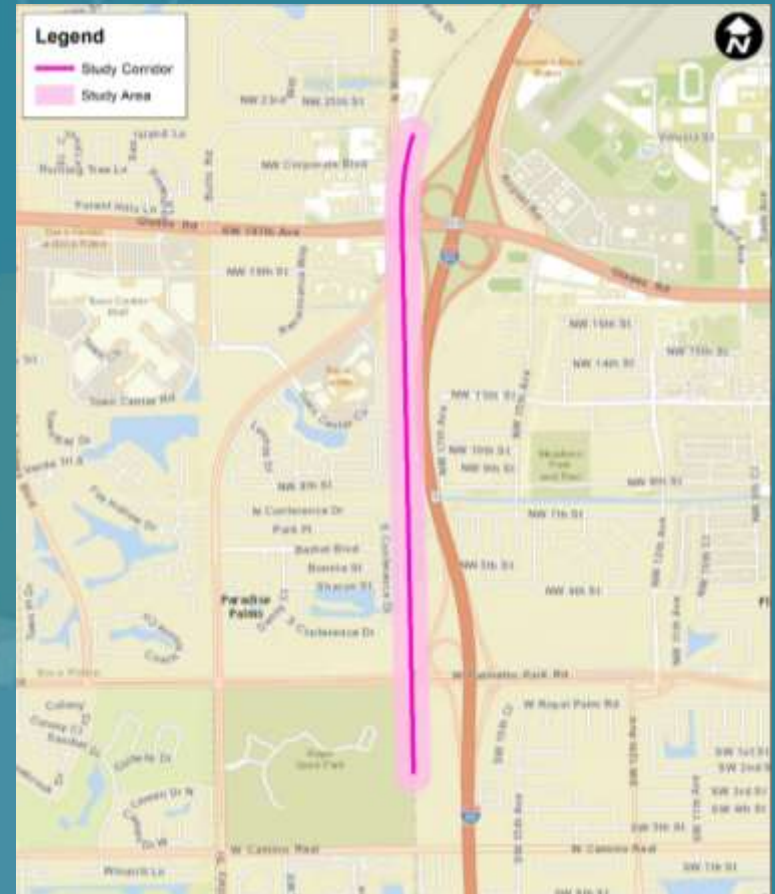
# Introduction

- Background for Boca Raton II Tri-Rail Station
  - Included in:
    - 2040 Long Range Transportation Plan (LRTP) - TPA
    - SFRTA Transit Development Plan (2008 and 2013)
    - FDOT Florida Rail Plan Investment Element
  - Site Location Analysis
    - Completed in May 2010
  - Feasibility Study
    - Completed in October 2016
    - Conclusion: ***No Fatal Flaws***



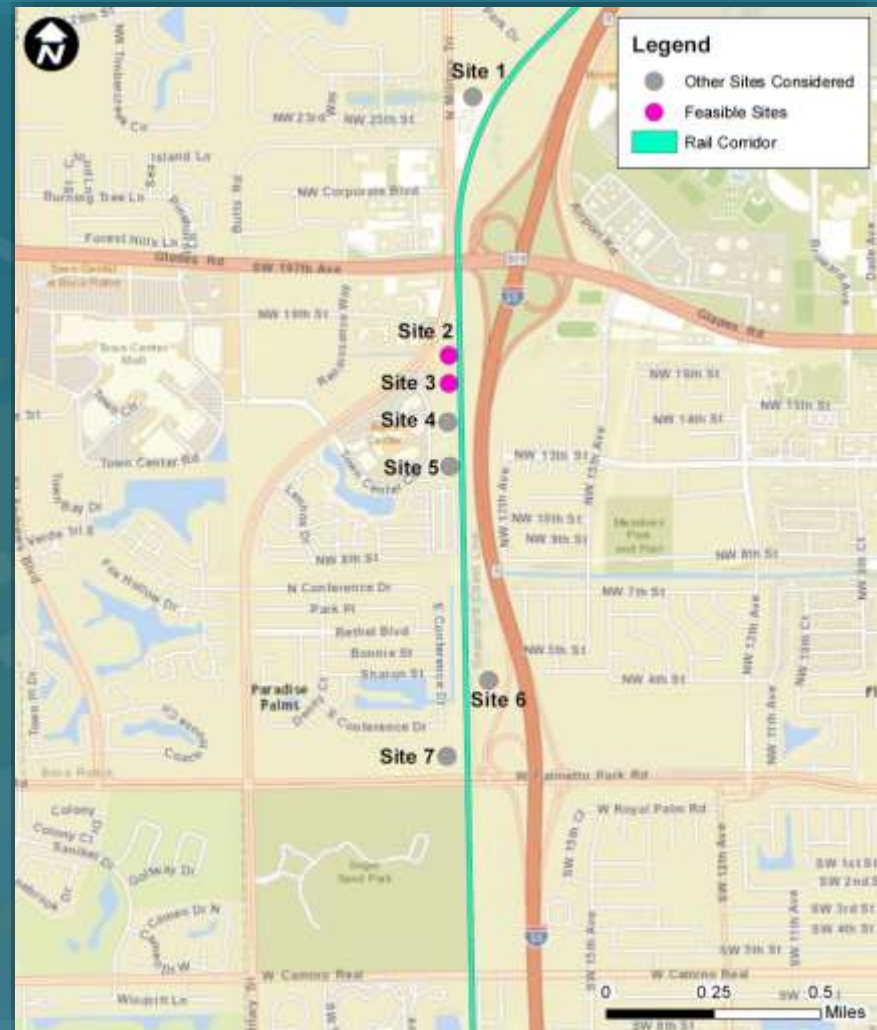
# Introduction

- Study Area
  - South Florida Rail Corridor
    - North of Glades Road to South of Palmetto Park Road



# Feasible Station Locations

- Began with 7 sites
- Eliminated 5 based on initial evaluation
- 2 Feasible Sites
  - Site 2 – Former King’s Deli Site
  - Site 3 – Northern Town Center Circle Site



# Concept Plan A



- **Acreage**
  - 2.12 Acres
- **Parking**
  - 45-55 Spaces

# Concept Plan B

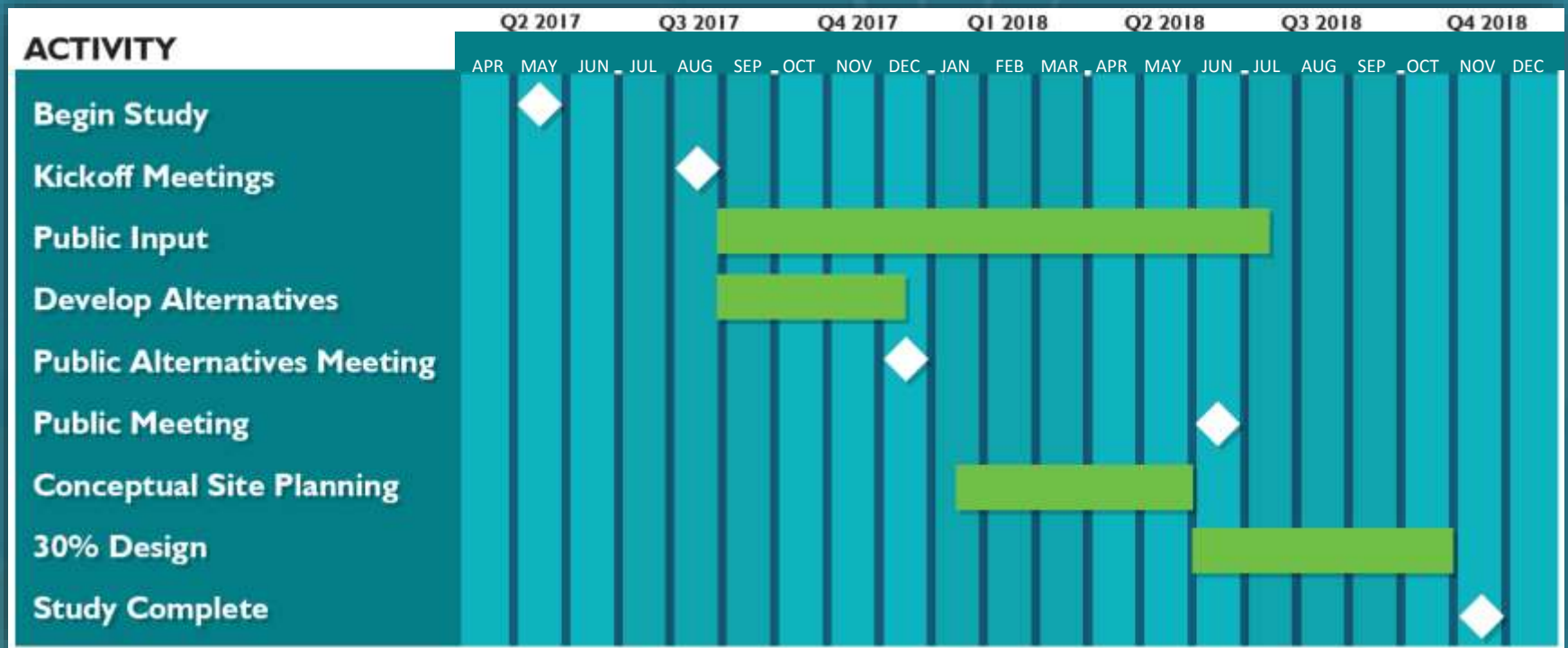


- **Acreage**
  - 2.43 Acres
- **Parking**
  - 80-90 Spaces





# Overall Schedule



# What's Next

- **Finalize Station Location and Design**
  - Access
  - Parking
- **Evaluate Environmental Impacts**
- **Evaluate Traffic Impacts**
- **Continuous Public Involvement**
- **Public Meeting in June 2018**
  - Recommended station location



Existing Boca Raton Tri-Rail  
Station at Yamato Road



# Contact

SFRTA Project Manager  
Natalie Yesbeck Pustizzi, AICP  
Transportation Planning Manager

SFRTA

801 NW 33<sup>rd</sup> Street

Pompano Beach, FL 33064

954-788-7957

[yesbeckn@sfrta.fl.gov](mailto:yesbeckn@sfrta.fl.gov)

Merri Starr

Holt Communications

[Merri@HoltCommunications.net](mailto:Merri@HoltCommunications.net)

[www.tri-railboca2study.com](http://www.tri-railboca2study.com)