



NOV. 19, 2017



**Boca Raton II Tri-Rail Station
PD&E Study and 30% Documents**

**Palm Beach Transportation Planning Agency
Governing Board Meeting
December 14, 2017**

Agenda

- Introduction
- Feasible Station Locations
- Station Concept Plans
- Schedule
- What's Next

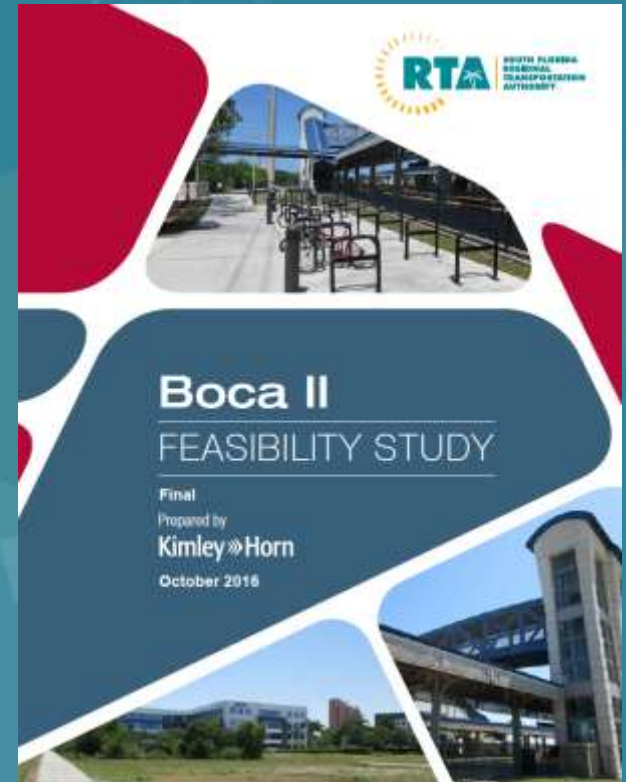


Partner Stakeholder Agencies



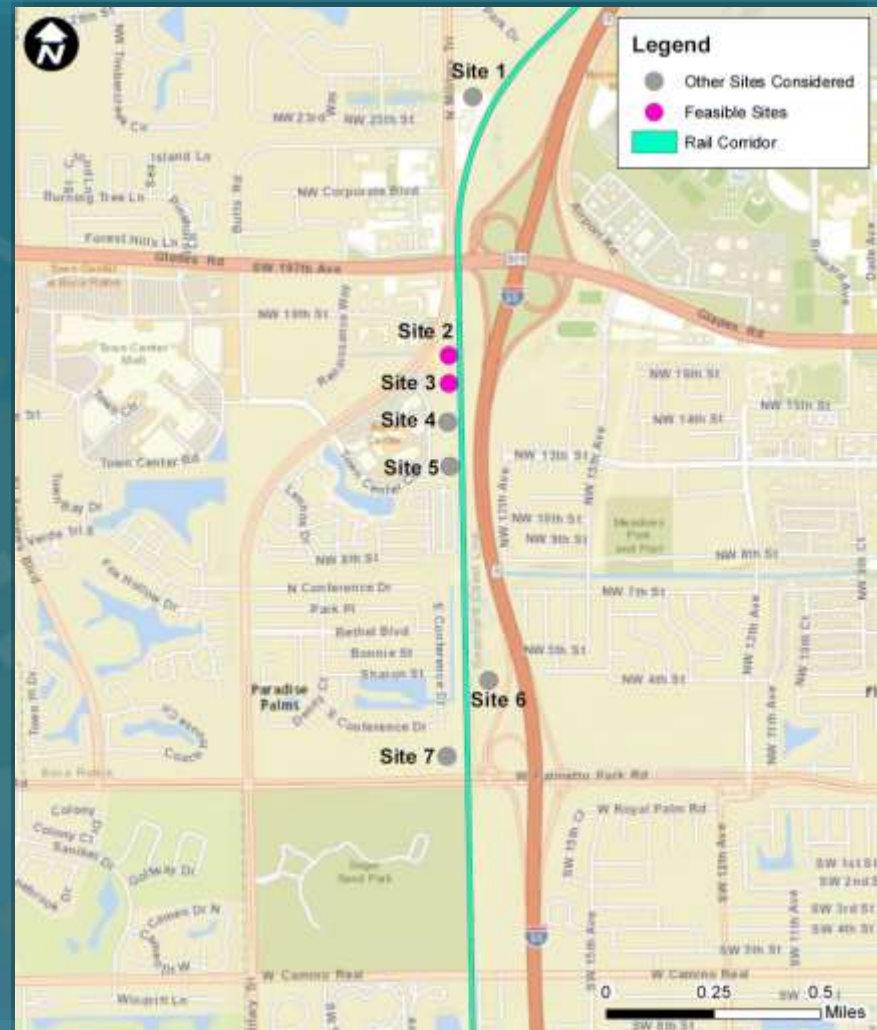
Introduction

- Background for Boca Raton II Tri-Rail Station
 - Included in:
 - 2040 Long Range Transportation Plan (LRTP) - TPA
 - SFRTA Transit Development Plan (2008 and 2013)
 - FDOT Florida Rail Plan Investment Element
 - Site Location Analysis
 - Completed in May 2010
 - Feasibility Study
 - Completed in October 2016
 - Conclusion: ***No Fatal Flaws***



Feasible Station Locations

- Began with 7 sites
- Eliminated 5 based on initial evaluation
- 2 Feasible Sites
 - Site 2 – Former King’s Deli Site
 - Site 3 – Northern Town Center Circle Site



Site A



Concept Plan A



- **Acreage**
 - 2.12 Acres
- **Parking**
 - 45-55 Spaces

Site B

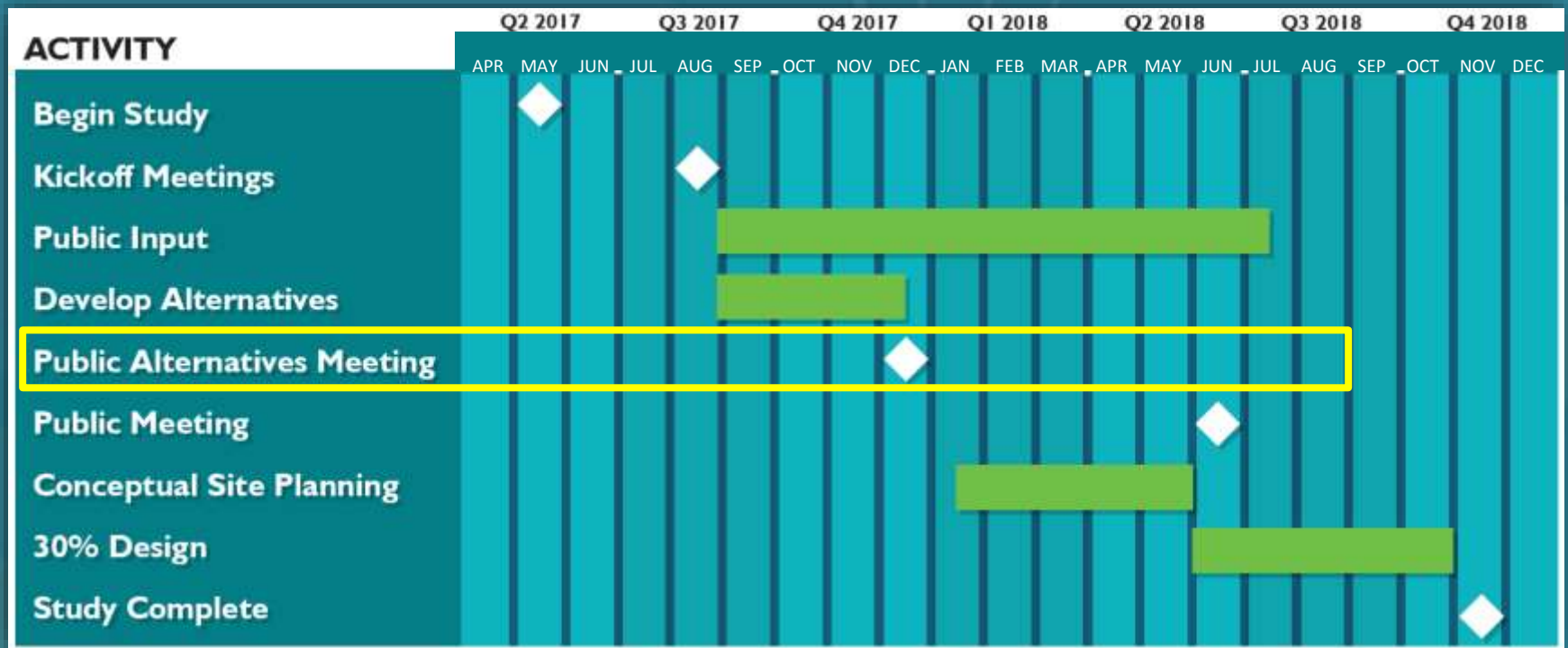


Concept Plan B



- **Acreage**
 - 2.43 Acres
- **Parking**
 - 80-90 Spaces

Overall Schedule



What's Next

- **Finalize Station Location and Design**
 - Access
 - Parking
- **Evaluate Environmental Impacts**
- **Evaluate Traffic Impacts**
- **Continuous Public Involvement**
- **Public Meeting in June 2018**
 - Recommended station location



Existing Boca Raton Tri-Rail
Station at Yamato Road