



1

A blue horizontal bar at the top of the slide contains a white graphic of three horizontal lines on the left and the text 'What are we required to measure?' in white.

What are we required to measure?

- **Safety – adopt annually**
 - Bridge and Pavement Condition
 - System Performance (Travel time reliability)
 - Transit Asset Management
 - Tri-Rail
 - Palm Tran
- **Transit Safety – adopt annually**
 - **Palm Tran**

2



3

A blue header bar with a white stylized arrow pointing right. The text "Required Safety Measures" is written in white, sans-serif font to the right of the arrow.

1. Number of fatalities
2. Rate of fatalities per 100 million VMT
3. Number of serious injuries
4. Rate of serious injuries per 100 million VMT
5. Number of non-motorized fatalities and serious injuries

VMT = Vehicle Miles Traveled

4

Previous Targets

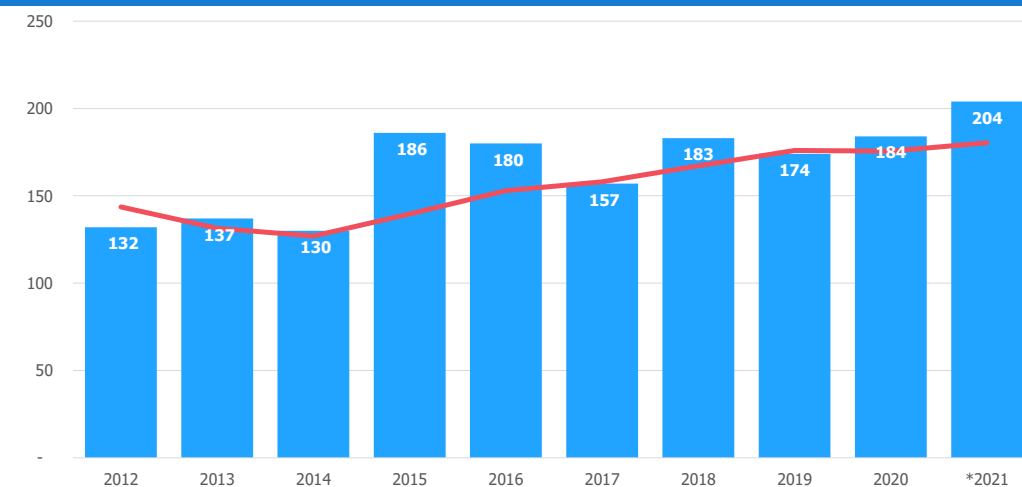
Adopted targets of zero fatalities & serious injuries for 2018 - 2021

- FHWA: zero fatalities on our Nation's roadways is the only acceptable goal
- FDOT: Formally adopted targets of zero for 2018 – 2021
- Updated Vision Zero Action Plan in 2021. Progress report provided during Strategic Plan update in July.

5

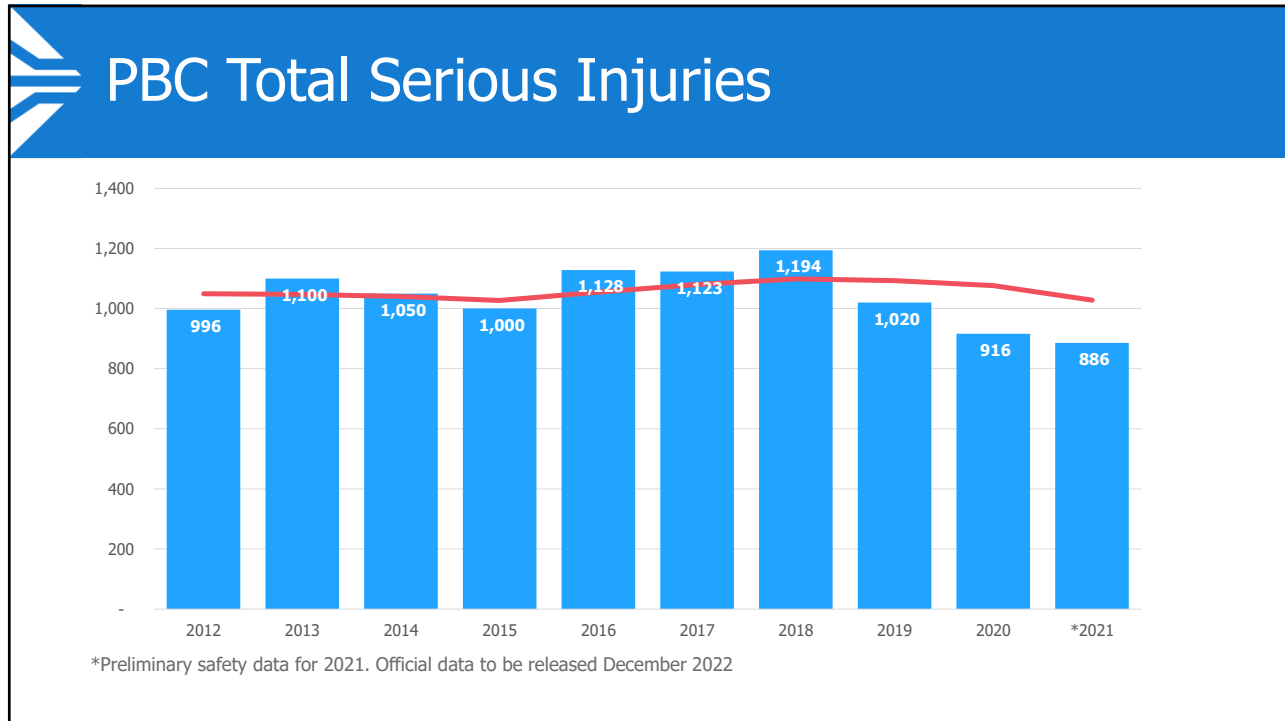
5

PBC Total Fatalities

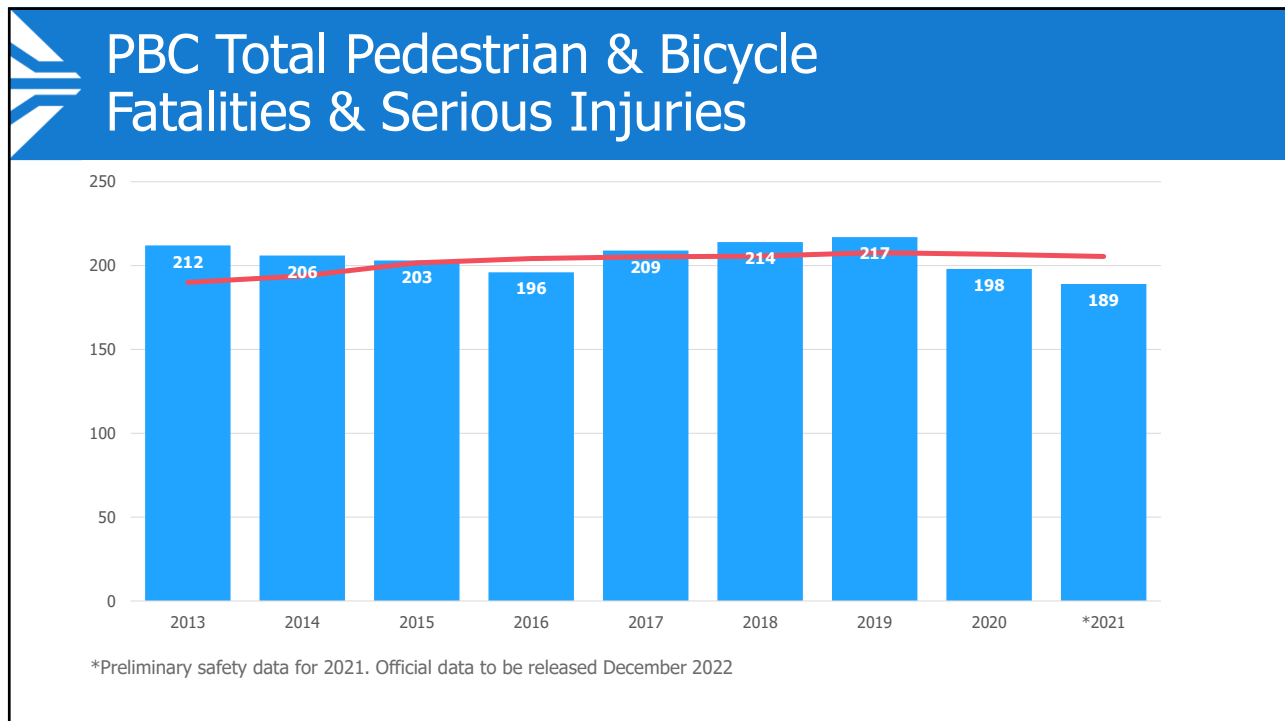


*Preliminary safety data for 2021. Official data to be released December 2022

6



7



8

Recommended 2022 Targets

Performance Measures	2020 Actual	2021 Actual	2022 Target
Number of fatalities	184	204	0
Rate of fatalities per 100 million VMT*	1.39	<i>Not available</i>	0
Number of serious injuries	916	886	0
Rate of serious injuries per 100 million VMT*	6.91	<i>Not available</i>	0
Number of non-motorized fatalities and serious injuries	223	189	0
*VMT = Vehicle Miles Traveled		Official FDOT data	Preliminary Signal4 data
Crash rates not available until release of VMT data.			

9



10

Required Palm Tran Measures by Mode

1. Number of fatalities
2. Rate of fatalities per 100 thousand VRM
3. Number of injuries
4. Rate of injuries per 100 thousand VRM
5. Number of safety events
6. Safety events per 100 thousand VRM
7. Average miles between mechanical failures

VRM = Vehicle Revenue Miles

11

11

Required for Fixed Route & Paratransit



Fixed Route - Bus



Paratransit – Palm Tran Connection

12

Palm Tran Methodology and Target Setting

- Palm Tran sets targets to attain improvements over their previous 4-year averages

13

13

Palm Tran Safety Targets Detailed

Performance Measure	2016	2017	2018	2019	2020	2021	2022 Target
Fixed Route (Bus)							
Number of Fatalities	1	0	0	0	0	1	0
Fatality Rate per 100k VRM	0.0	0.0	0.0	0.0	0.0	0.01	0.0
Number of Injuries	119	67	78	68	40	34	63
Injury Rate per 100k VRM	1.6	1.0	1.1	0.9	0.6	0.5	0.9
Number of Safety Events	79	46	52	45	30	23	43
Safety Event Rate per 100k VRM	1.1	0.7	0.8	0.6	0.4	0.3	0.6
Mean distance between mechanical failures (miles)	4,063	4,901	5,257	13,282	13,083	12,719	14,000
Total Vehicle Revenue Miles	7,458,933	6,818,438	6,912,671	7,167,065	6,894,099	7,060,950	
Paratransit (Palm Tran Connection)							
Number of Fatalities	1	0	1	0	0	0	0
Fatality Rate per 100k VRM	0.0	0.0	0.0	0.0	0.0	0.0	0.0
Number of Injuries	38	39	41	38	25	17	34
Injury Rate per 100k VRM	0.4	0.4	0.4	0.4	0.3	0.2	0.4
Number of Safety Events	35	31	42	33	26	25	32
Safety Event Rate per 100k VRM	0.4	0.3	0.4	0.3	0.3	0.3	0.3
Mean distance between mechanical failures (miles)	12,152	32,483	22,865	6,664	6,971	15,581	7,700
Total Vehicle Revenue Miles	9,539,427	9,700,851	10,137,030	10,346,703	7,465,110	8,446,286	

14

2022 Palm Tran Fixed Route Targets

Performance Measures					Targets	
	2018	2019	2020	2021	Current 2021	New 2022
Number of fatalities	0	0	0	1	0	0
Fatality Rate per 100k VRM*	0.0	0.0	0.0	0.01	0	0
Number of injuries	78	68	40	34	<63	<63
Injury Rate per 100k VRM*	1.1	0.9	0.6	0.5	<0.9	<0.9
Number of Safety Events	52	45	30	23	<43	<43
Safety Events per 100k VRM*	0.8	0.6	0.4	0.3	<0.6	<0.6
Miles between mechanical failures	5,257	13,282	13,083	12,719	>14,000	>14,000
Total Calendar Year VRM*	6,912,671	7,167,065	6,894,099	7,060,950		

*VRM = Vehicle Revenue Miles

15

15

2022 Palm Tran Paratransit Targets

Performance Measures					Targets	
	2018	2019	2020	2021	Current 2021	New 2022
Number of fatalities	1	0	0	0	0	0
Fatality Rate per 100k VRM*	0.0	0.0	0.0	0.0	0	0
Number of injuries	41	38	25	17	<34	<34
Injury Rate per 100k VRM*	0.4	0.4	0.3	0.2	<0.4	<0.4
Number of Safety Events	42	33	26	25	<32	<32
Safety Events per 100k VRM*	0.4	0.3	0.3	0.3	<0.3	<0.3
Miles between mechanical failures	22,865	6,664	6,971	15,581	>7,700	>7,700
Total Calendar Year VRM*	10,137,030	10,346,703	7,465,110	8,446,286		

*VRM = Vehicle Revenue Miles

16

16

2022 Palm Tran Paratransit Targets

Performance Measures	Paratransit	
	2021 Actual	2022 Target
Number of fatalities	0	0
Fatality Rate per 100k VRM*	0	0
Number of injuries	17	<34
Injury Rate per 100k VRM*	0.2	<0.4
Number of Safety Events	25	<32
Safety Events per 100k VRM*	0.3	<0.3
Distance between mechanical failures (mi.)	15,581	>7,700
Total Calendar Year VRM*	8,446,286	

*VRM = Vehicle Revenue Miles

17

17



MOTION TO RECOMMEND ADOPTION:
A Resolution Approving 2022 Safety Targets

18