

Westgate/Belvedere Homes  
Community Redevelopment Agency

# Belvedere Heights Streetlights & Sidewalks Improvements Project Phase II

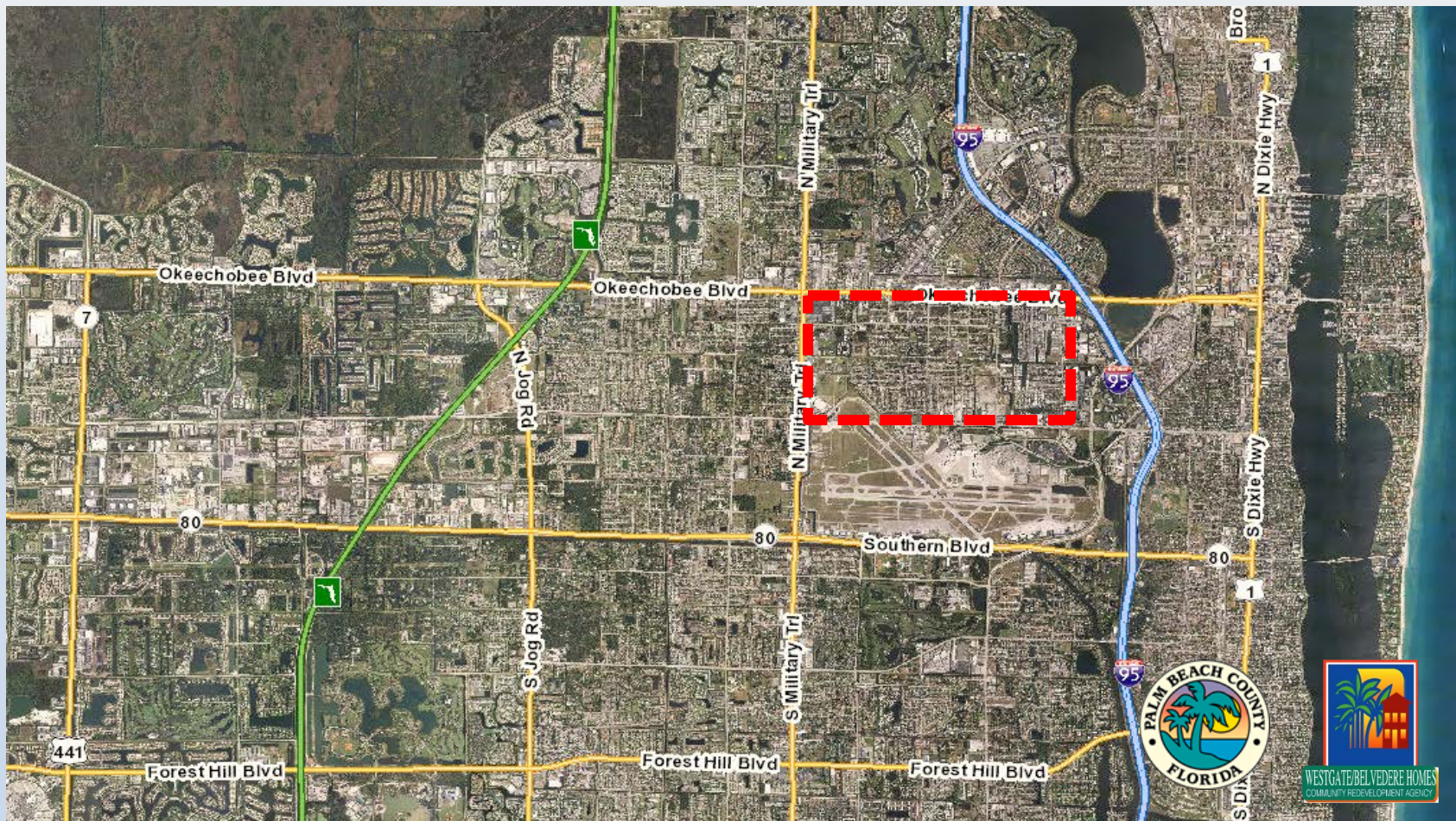
TPA 2018 Transportation Alternatives Program (TAP)  
BTPAC Presentation  
Thursday, April 5, 2018





# WESTGATE CRA AREA

- Approx. 1,300 acres or 2 square miles
- Area bounded by Okeechobee Blvd., N. Military Trail, Belvedere Rd., and N. Florida Mango Rd.



# WESTGATE CRA BACKGROUND

- Westgate CRA created in May 1989 by the BCC pursuant to FS Ch. 163 Part III
- With the primary objective of improving public infrastructure and promoting economic development
- Agency receives tax increment revenue based on property improvement values from PBC annually
- Used to implement goals of Community Redevelopment Plan
- CRA's leverage TIF dollars with State and Federal grant funding
- Completed over \$30 million in sanitary sewer, drainage, roadway, and flood mitigation improvements in residential neighborhoods from 1992-2012





# SUCCESSFUL CRA INFRASTRUCTURE PROJECTS

## Streetlight Programs

### Belvedere Homes

- Ongoing since 1999 – CRA funded

### Cherry Road

- 40 decorative light standards – CRA funded



CHERRY ROAD STREETLIGHTS



# SUCCESSFUL CRA INFRASTRUCTURE PROJECTS

## South Westgate 1992 -1996

- \$3.3 million bond secured for sanitary sewer, drainage & roadway improvements



## North Westgate 2004 -2011

- Multi-phase (6) sanitary sewer, drainage & roadway improvement project spanning 7 years
- \$7 million in grant funding leveraged with CRA TIF funds



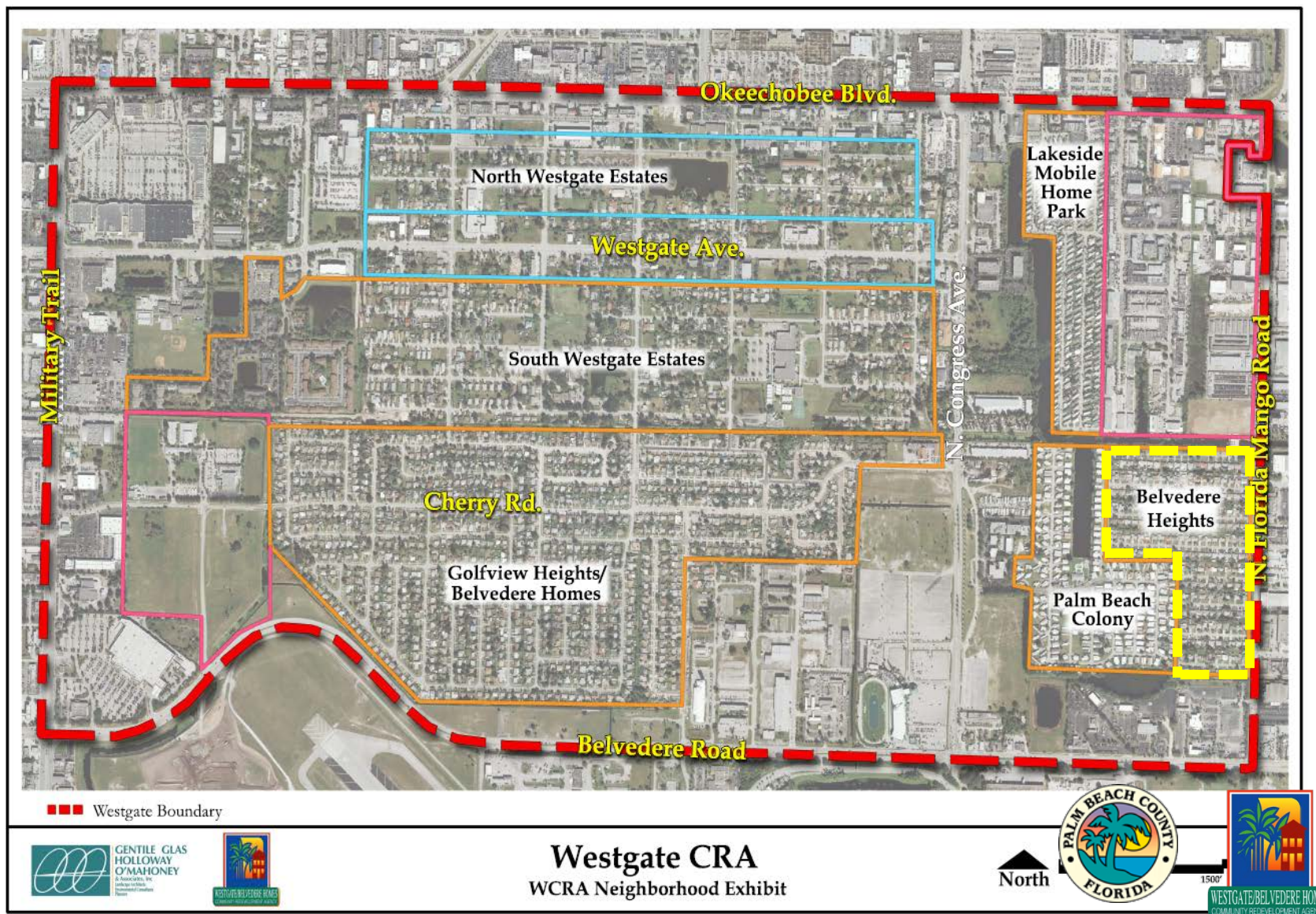
## PROJECT BACKGROUND

- Improvements to infrastructure continue to be a priority
- Focus on above-ground streetscape improvements and development of walkable public spaces
- Many pockets throughout CRA without adequate streetlighting or a connected sidewalk network
- Belvedere Heights is a small residential neighborhood accessed only from N. Florida Mango Road
- No existing streetlights or sidewalks



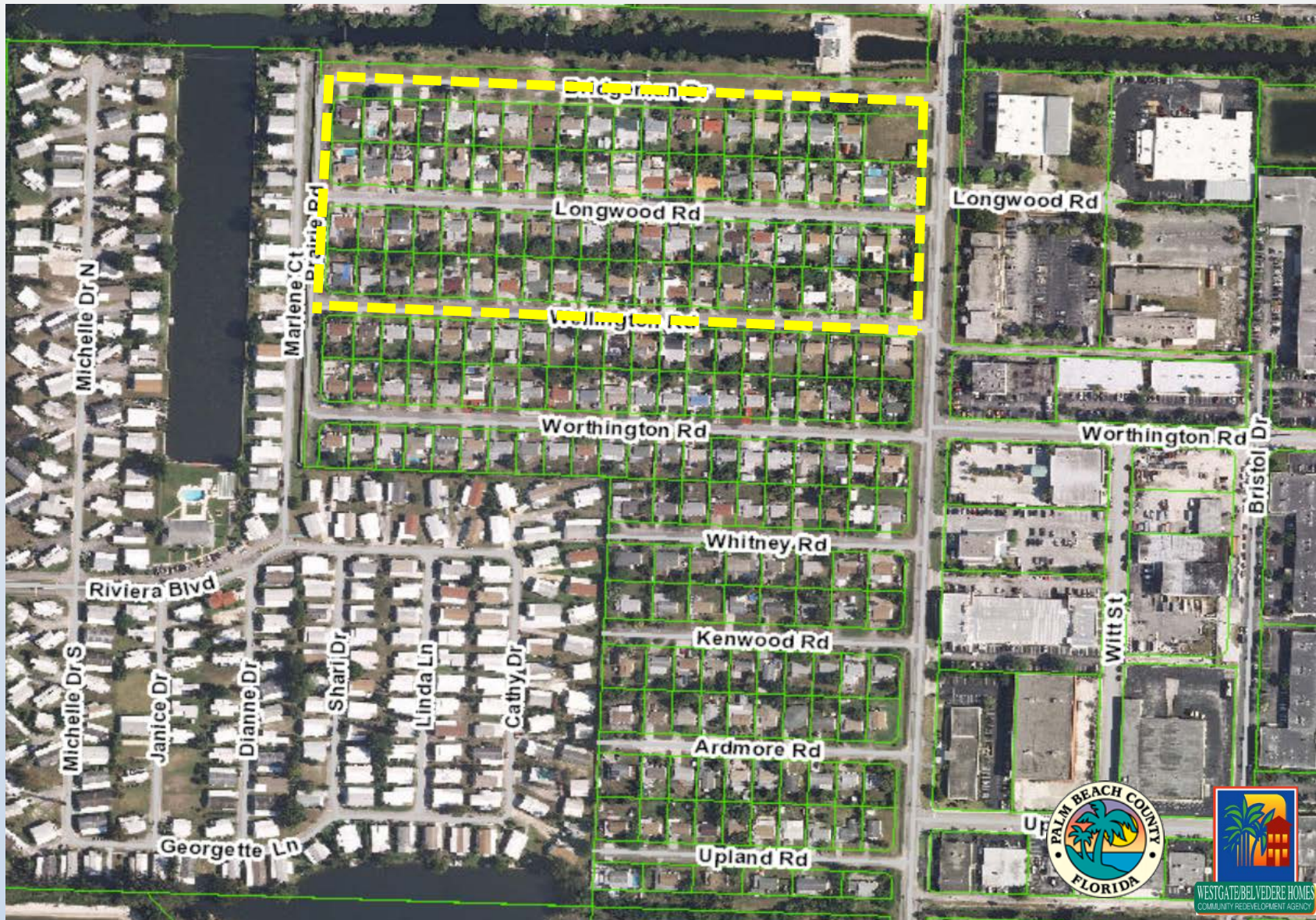


# GENERAL PROJECT LOCATION





## PHASE II LOCATION – WELLINGTON RD. TO BRIDGEMAN DR.





## PHASE II PROJECT DESCRIPTION

- Intended to increase walkability, pedestrian safety, and neighborhood security by improving basic infrastructure
- Phase I (Upland Rd. to Worthington Rd.) awarded FY17 TPA TAP funding
- Phase II completes remaining 3 roads in neighborhood
- +/- 6,375 linear feet of new 5' wide concrete sidewalks on 5 local streets
- Total of 28 decorative pedestrian-scale streetlights
- All planned improvements are in County R-O-W
- Future phases – roadway improvements & bike lanes throughout neighborhood and N. Florida Mango



# EXISTING CONDITIONS



Bridgeman Dr.



Longwood Rd.



Wellington Rd.



N. Florida Mango





# EXISTING 50' R-O-W

BELVEDERE HEIGHTS STREETLIGHTS & SIDEWALKS PHASE II  
TYPICAL SECTION – EXISTING 50' ROW  
(STREETMIX)

Wellington Rd.  
Longwood Rd.



# EXISTING 80' R-O-W

BELVEDERE HEIGHTS STREETLIGHTS & SIDEWALKS PHASE II  
TYPICAL SECTION – EXISTING 80' ROW  
(STREETMIX)

Bridgeman Dr.





# PROPOSED 50' R-O-W

BELVEDERE HEIGHTS STREETLIGHTS & SIDEWALKS PHASE II  
TYPICAL SECTION – PROPOSED 50' ROW  
(STREETMIX)

Wellington Rd.  
Longwood Rd.



EXTENT OF SCOPE OF  
WORK



# PROPOSED 80' R-O-W

BELVEDERE HEIGHTS STREETLIGHTS & SIDEWALKS PHASE II  
TYPICAL SECTION – PROPOSED 60' ROW  
(STREETMIX)

Bridgeman Dr.



EXTENT OF SCOPE OF  
WORK





# FUNDING ELIGIBILITY

## LRTP Scoring Criteria

### 1. Safety, Security and Complete Streets

- Project designed to consider future roadway improvements
- Allow for a future 6' paved shoulder/bike lane on both sides of street and reduced 10' drive lanes
- Addition of sidewalks furthers ADA compliance by providing crosswalk striping and by connecting to existing sidewalks on N. Florida Mango Road
- Provides safer route for children to access school bus drop off/pick up on N. Florida Mango
- Improves non-motorized safety by providing 6,375 points for new sidewalks
- A planned lane reduction from 12' to 10' and the addition of 6' bike lanes increases non-motorized points to +7,412,750



# FUNDING ELIGIBILITY

## LRTP Scoring Criteria

### 2. Maximizing MPO Funds

- Estimated total project costs \$1,499,642.71
- Requesting \$913,832.89 in TAP grant funding
- Utilizing local funds (CRA revenue and/ or grant funding from alternate sources) for design, contingency, and CEI activities
- BCC resolution of support April 10, 2018

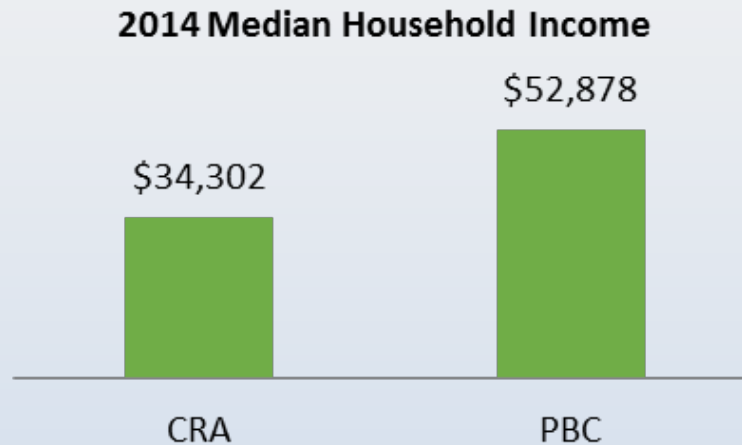




# FUNDING ELIGIBILITY

## LRTP Scoring Criteria

### 3. Equity – Median HH Income



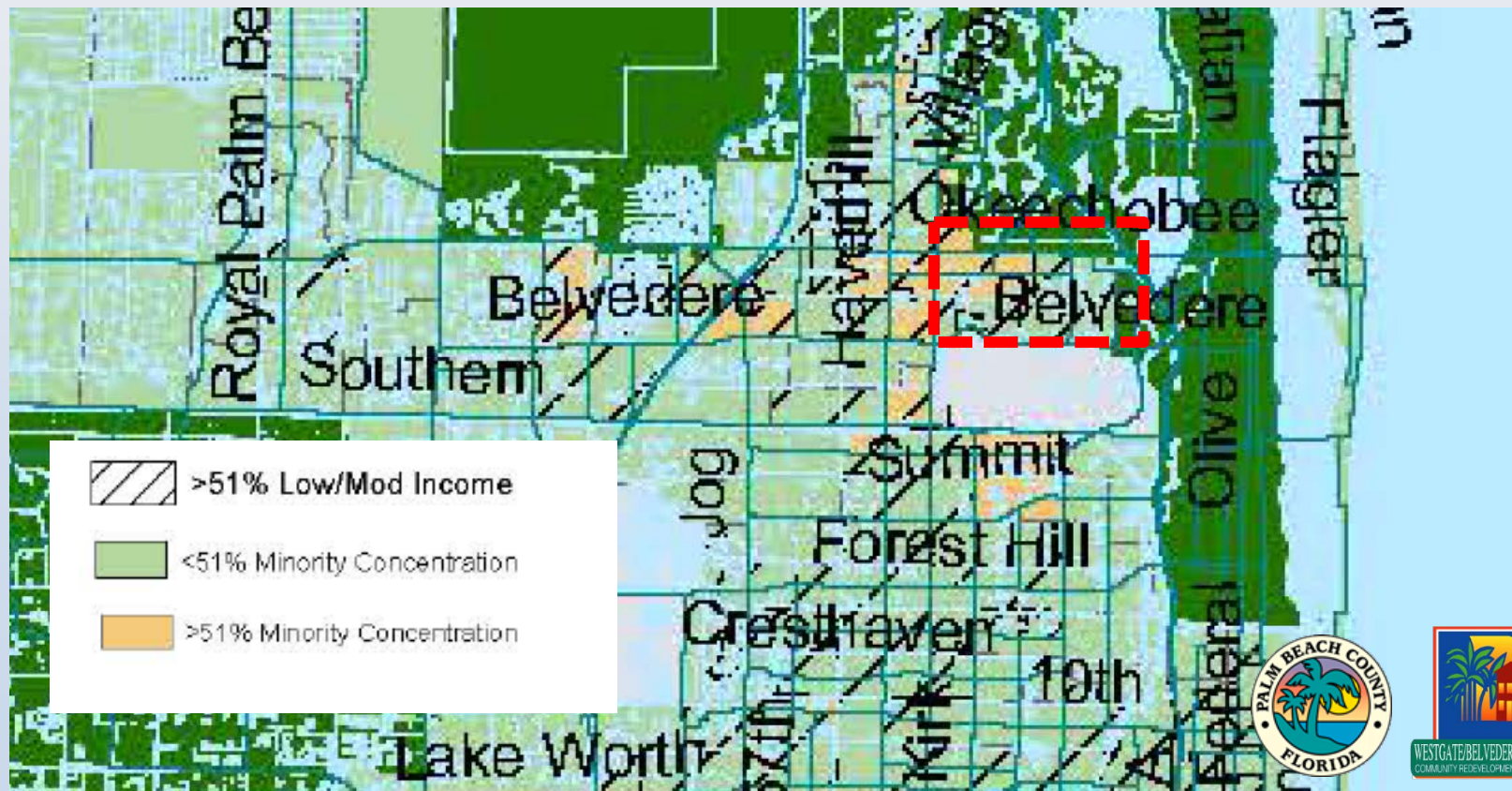
- 2014 population of 11,433
- 2,939 households in 2014
- 57% of CRA households in lower income ranges
- 28% are considered very low



# FUNDING ELIGIBILITY LRTP Scoring Criteria

## 3. Equity – Traditionally Underserved Population

PBC Jurisdictions – Low Income & Ethnic Minority Concentrations  
(DES Consolidated Plan 2015-2020)





# FUNDING ELIGIBILITY

## LRTP Scoring Criteria

### 4. Local Support & Environmental Impacts

- Improved sidewalk network and streetlights identified by community as important
- Continuing concern over crime and safety
- Addition of streetlights increases security and visibility for law enforcement – project is supported by PBSO community policing deputies
- Project is supported by PBC School District
- Resident support received for both phases of the project
- No anticipated negative environmental impacts



# FUNDING ELIGIBILITY

## L RTP Scoring Criteria

### 4. Non-Motorized Connectors & Efficient Transit

- Belvedere Road identified as a 110' R-O-W thoroughfare
  - ✓ Provision to add 6' bike lane in future neighborhood roadway design improves connectivity to Belvedere Road
- Belvedere Heights neighborhood has access to Palm Tran Routes 42 and 44 to downtown WPB, multi-modal transit station
  - ✓ Sidewalks and streetlights provide secure passage and walkability to transit points on N. Florida Mango Road and Belvedere Road





# FUNDING ELIGIBILITY

## LRTP Scoring Criteria

### 5. Proximity Benefit

- ✓ Project is within 0.7 miles of Westgate Elementary School
- ✓ Project is within 1.75 miles of Cross County Shopping Plaza
- ✓ Project is within 0.9 miles of Westgate Recreation Center



Questions?  
and  
Thank you!

Westgate/Belvedere Homes  
Community Redevelopment Agency

1280 N Congress Ave. Suite 215

561-640-8181

[www.westgatecra.org](http://www.westgatecra.org)

