

FY 2018-2019 Transportation Alternative (TA) Grant for
Dillman Trail

City of
Greenacres



Request

- The City is proposing to develop a **twelve (12) foot wide multi-use pathway** within an existing vacant eighty (80) foot right-of-way, that we are referring to as the Dillman Trail.
 - The trail will allow an alternative route between Dillman Road and Forest Hill Boulevard,
 - Provide an alternate route which connects up to three schools, a county park and a city park for residential pedestrian traffic, and
 - The project will be maintained as a Linear Park that is open from dawn to dusk.



DILLMAN ROAD

CHOLEE LAKE
ELEMENTARY SCHOOL

OKEEHELEE PARK
AND GOLF COURSE

12' WIDE ASPHALT MULTI
USE PEDESTRIAN PATH
WITH SWALE ADJACENT
AND LANDSCAPE

JOG ROAD IS
NEXT CROSS
ROAD TO THE EAST

FOREST HILL BOULEVARD

GREENACRES LINEAR PARK/PATHWAY PRELIMINARY EXHIBIT

North



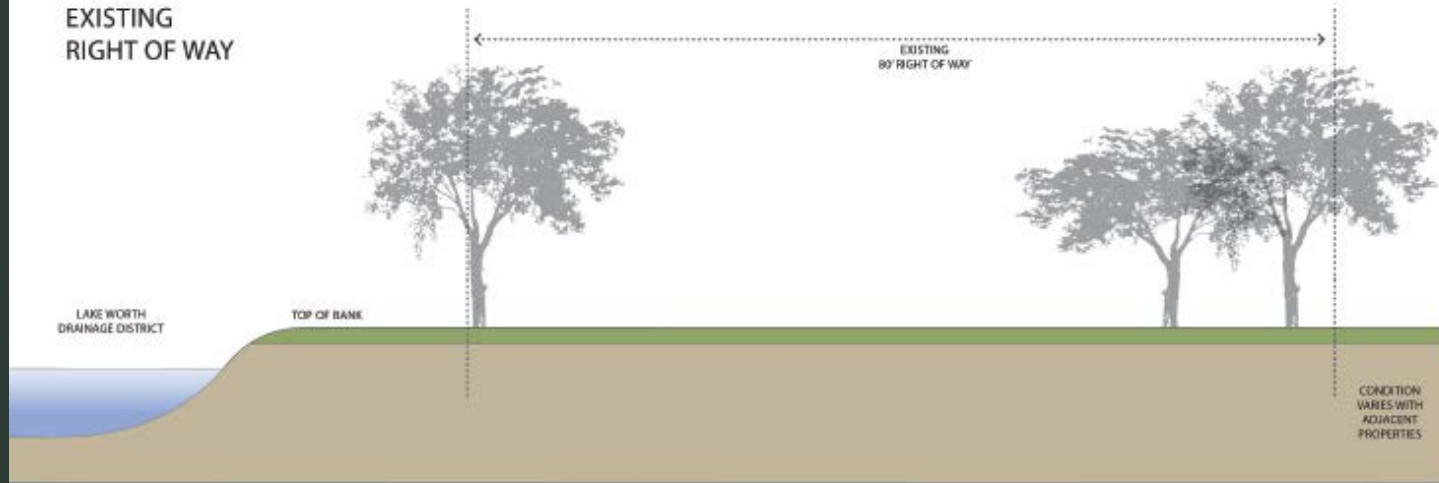
Interior



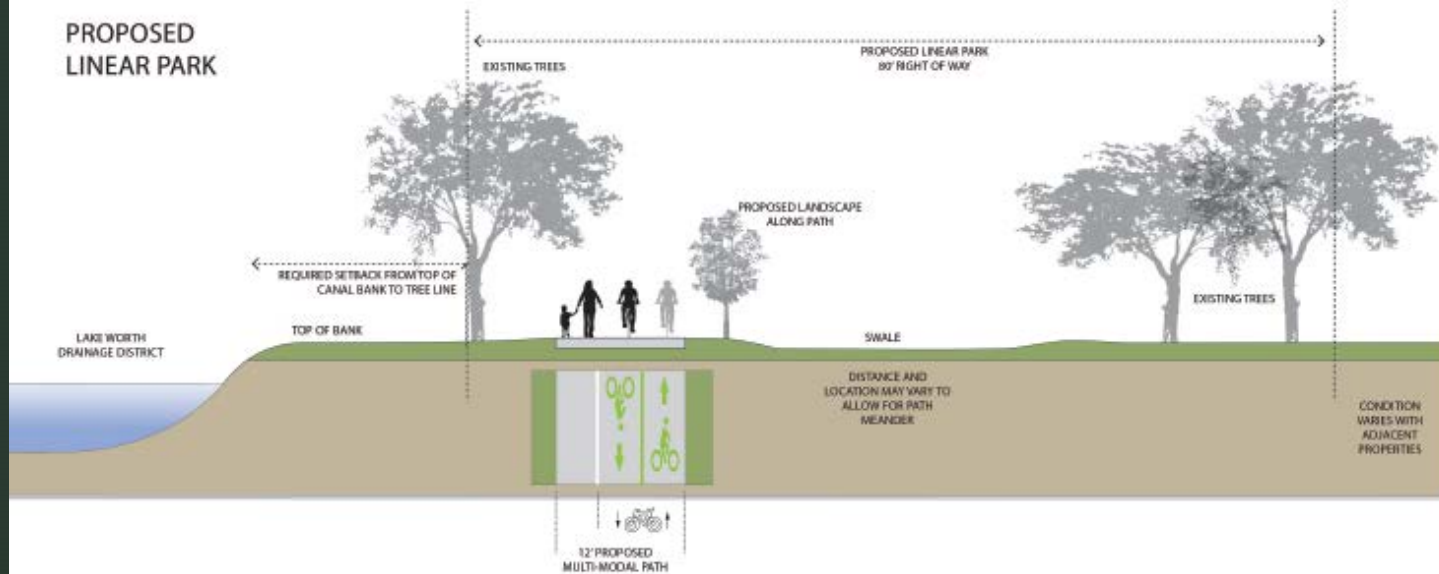
South



EXISTING RIGHT OF WAY



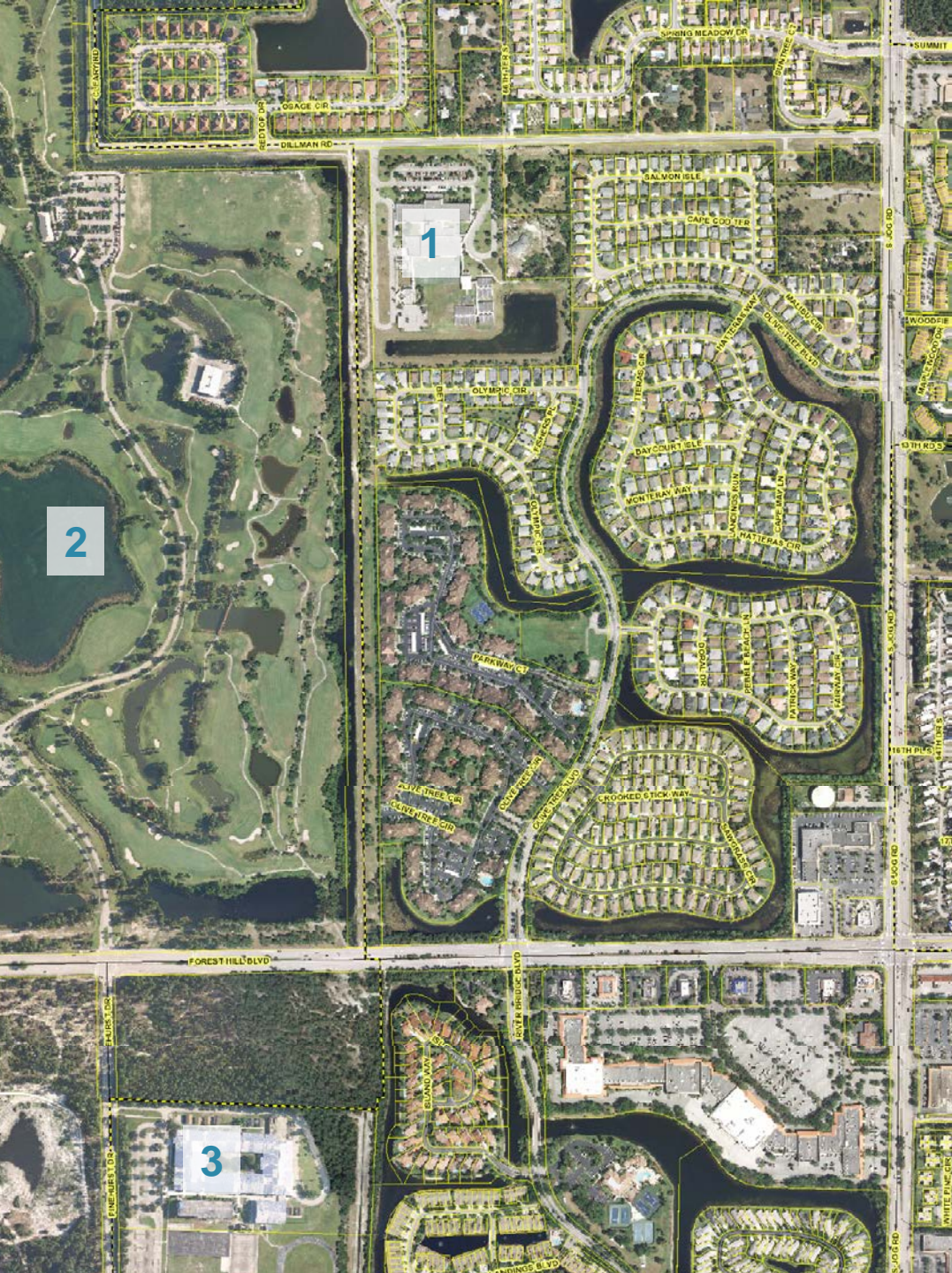
PROPOSED LINEAR PARK



Ownership & Greenacres Commitments

- Palm Beach County gave the right-of-way to the City of Greenacres on December 16, 1997.
- During FY 2020 budget, the City will budget to include up to \$50,000 in landscaping to provide red maple and live oaks trees along the pathway.
- The project will include a swale for required drainage to offset the proposed pathway
- The City will be responsible for continued maintenance of the Dillman Trail and it will include it as a Linear Park. Future budget years will include improvements, such as exercise stations to add to the utilization of the trail, as well as landscape maintenance and pathway repair and upkeep.

Adding connections...



1. Cholee Lake Elementary
2. Okeeheelee Park
3. Okeeheelee Middle School
4. Freedom park (not shown)
5. Liberty Park Elementary (not shown)

Cost

- TAP Funds \$533,696.76
- Local Funds \$ 49,750.00



THANK YOU FOR YOUR CONSIDERATION!



CRAVEN • THOMPSON AND ASSOCIATES, INC.
ENGINEERS • PLANNERS • SURVEYORS
9065 NEW 54RD STREET, FORT LAUDERDALE, FLORIDA 33329
FAX: (954) 739-6498 TEL: (954) 739-6840
FLORIDA LICENSED ENGINEERS, ARCHITECTS & SURVEYORS LICENSE NO. 231
FLORIDA LICENSED LANDSCAPE ARCHITECTS LICENSE NO. 56, 60, 60074

Prepared by:	PE Number:	05022
Lecorant Z. Gamble		3/2/18
Name:	Signature:	Date:
Reviewed by:		
Name:	Signature:	Date:
Approved by (Agency Responsible Change):		
Name:	Signature:	Date: