

VILLAGE of WELLINGTON

Transportation Alternatives Program 2017 Presentation to BTPAC

BIG BLUE TRACE PATHWAY IMPROVEMENTS

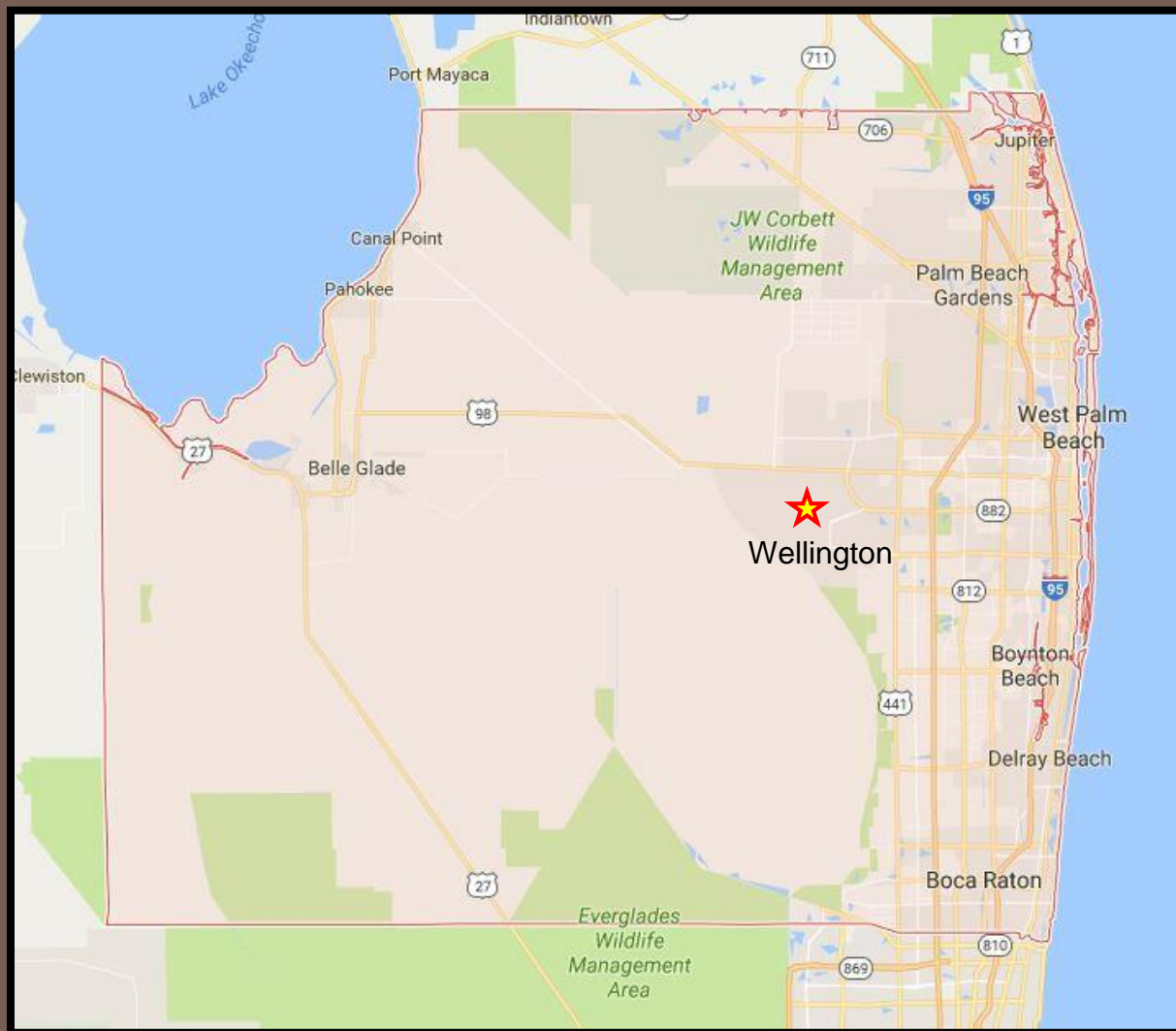
April 6, 2017

Branden Miller & Ryan Harding – VOW, Planning & Zoning



REQUEST:

Leveraging funds to plan, design and construct improvements for Big Blue Trace. Funding request is for multi-purpose pathways within the Big Blue Trace right-of-way, a collector road in the heart of Wellington.



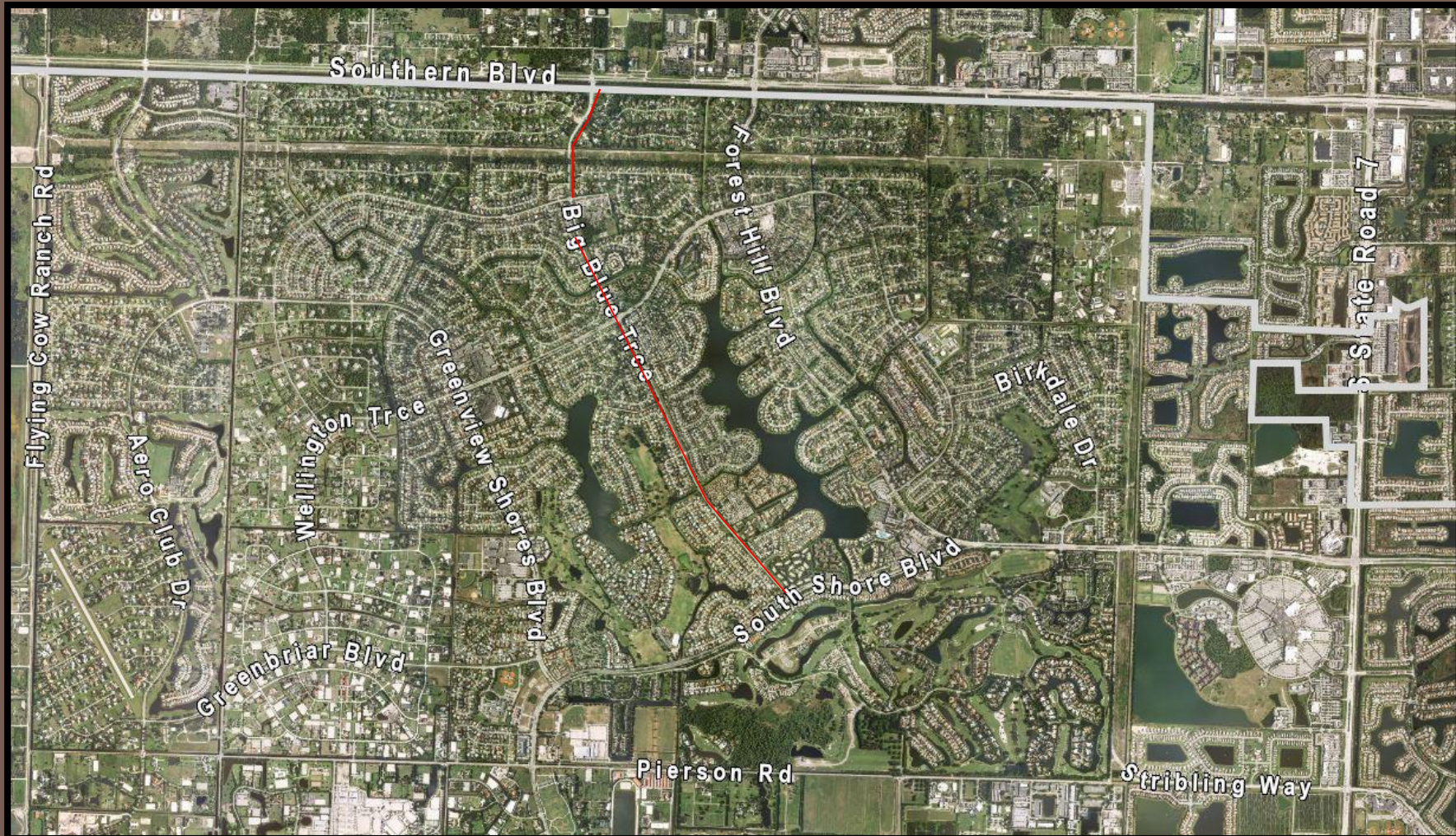


Bicycle & Pedestrian Circulation Plan

Evaluation and Recommendations



Engenuity Group Inc.
Lucido & Associates
In cooperation with and support of the
Village of Wellington Planning Department
November 19, 2015



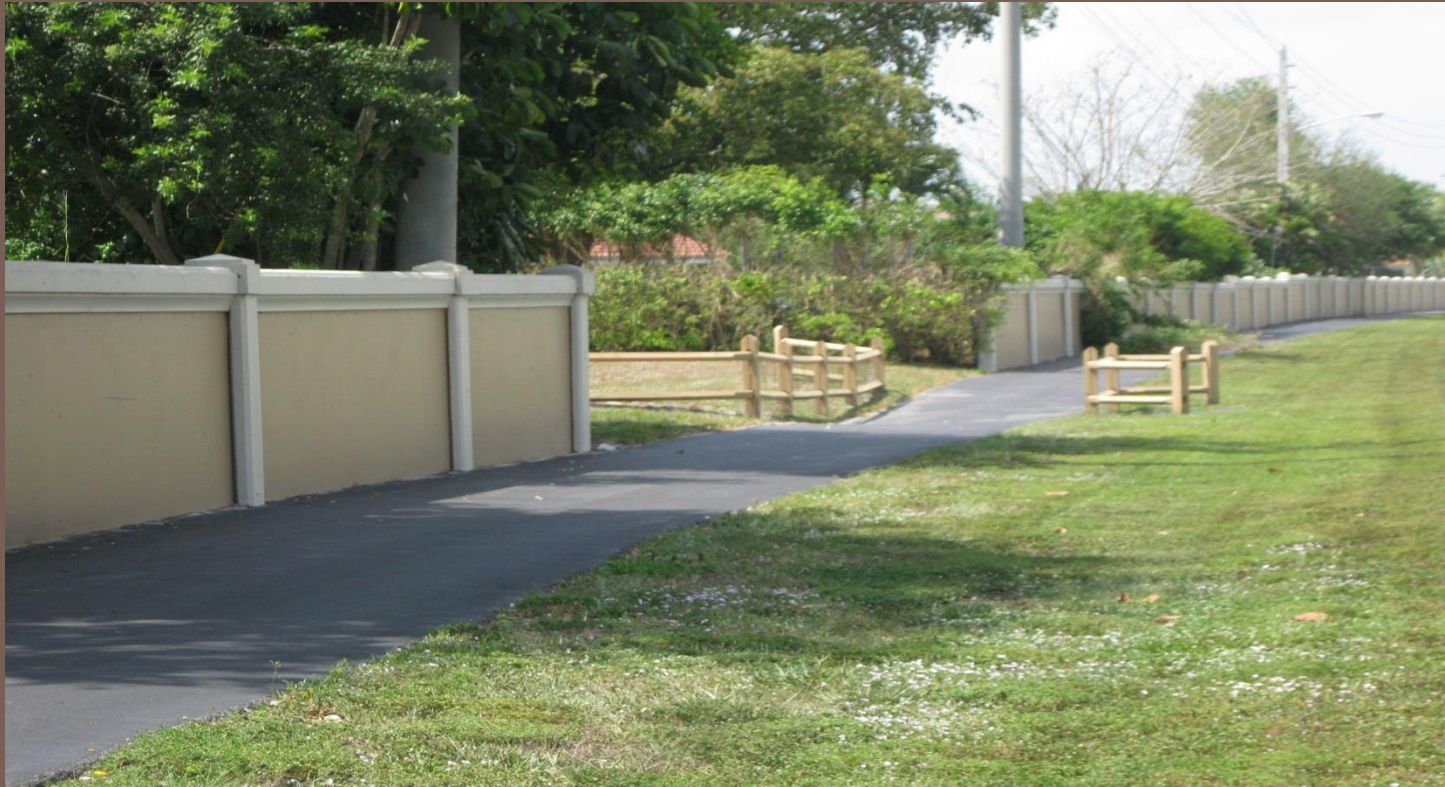
WEST SIDE OF BIG BLUE TRACE:



WEST SIDE OF BIG BLUE TRACE:



WEST SIDE OF BIG BLUE TRACE:



WEST SIDE OF BIG BLUE TRACE:



EAST SIDE OF BIG BLUE TRACE:



EAST SIDE OF BIG BLUE TRACE:



EAST SIDE OF BIG BLUE TRACE:



EAST SIDE OF BIG BLUE TRACE:



OVERVIEW OF PROPOSED IMPROVEMENTS

Pathway Improvements

- Widen pathway from 8' – 10' on the east and west sides
- Bring pathway out, away from wall on west side
- Character – meander, add landscaping
- Centerline striping on widened pathways

Estimated construction cost = \$1,099,181.20

VILLAGE of WELLINGTON

Transportation Alternatives Program 2017 Presentation to BTPAC

BIG BLUE TRACE PATHWAY IMPROVEMENTS

April 6, 2017

Questions?