

TRANSPORTATION ALTERNATIVES PROGRAM (TAP)

2016 APPLICATION CYCLE



FDOT – DISTRICT 4: LAP CONTACT INFORMATION

Local Agency Program for Federal Aid Projects

Christine Fasiska: Local Agency Program Administrator – (954) 777-4480

Ryan Jensen (*Interim*): Broward County – (954) 777-4217

Sunshine Cayubit: Palm Beach – (954) 777-4691

Carlos Lemus: Martin, St. Lucie, and Indian River – (954) 777-4522

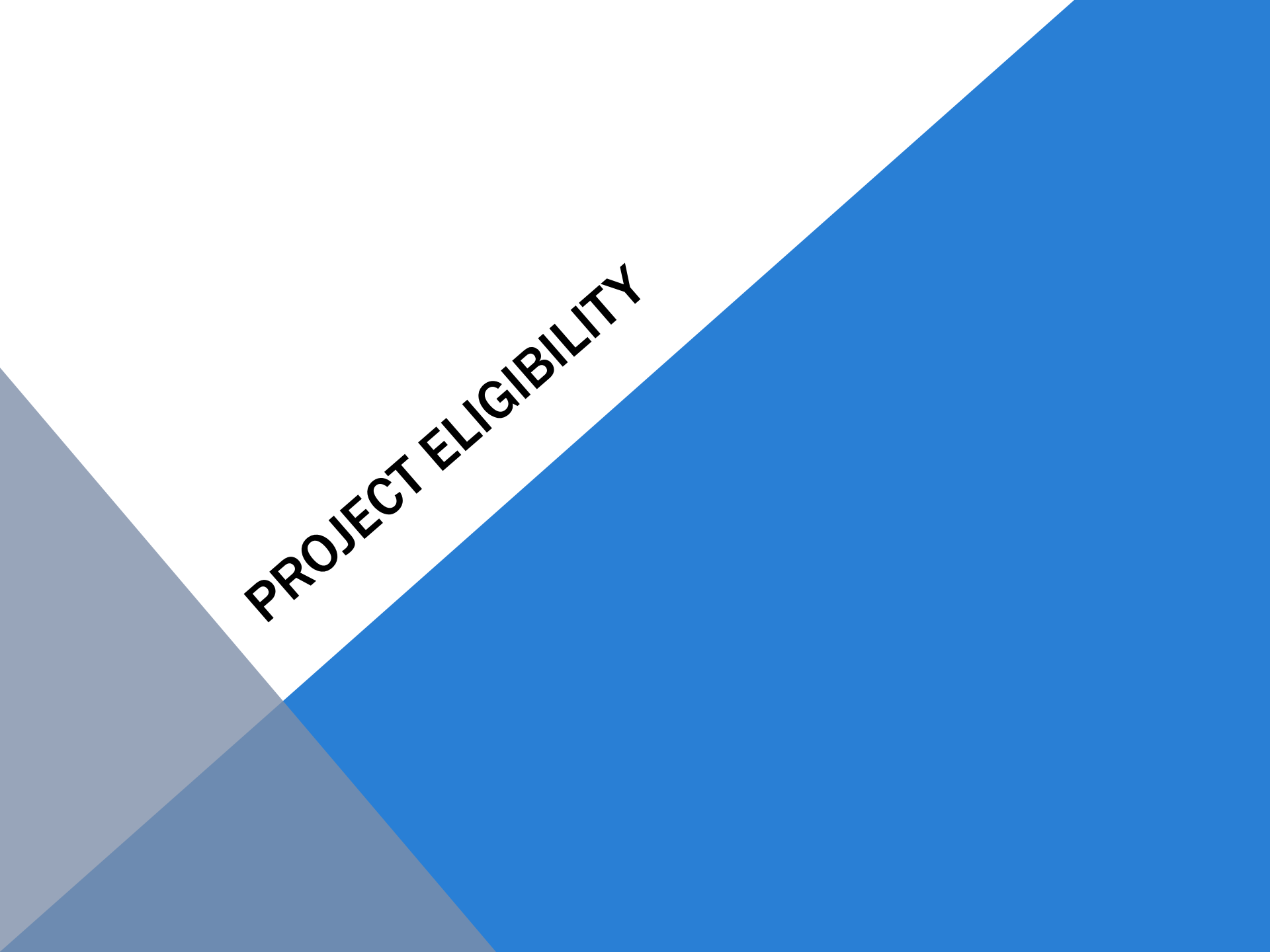
2016 APPLICATION CYCLE FUNDING

FISCAL YEAR 2019/20

County	Fiscal Year 19/20 Funding Estimate	Last Year's Estimate
Broward	\$3,435,877	\$4,417,540
Palm Beach	\$3,151,992	\$3,188,045
Martin	\$358,091	\$362,191
St. Lucie	\$646,746	\$654,151
Indian River	\$461,618	\$464,936

**SIMILAR FUNDING TO LAST CYCLE
(FIGURES ABOVE ARE SUBJECT TO CHANGE)**

**TAP is a cost-reimbursement program, NOT a
grant.**

The background consists of several overlapping triangles. A large blue triangle occupies the right half of the image. On the left, there are grey triangles of varying shades, some overlapping the blue one. The text 'PROJECT ELIGIBILITY' is written in black, bold, uppercase letters, rotated 45 degrees counter-clockwise, and positioned in the white space between the grey and blue triangles.

PROJECT ELIGIBILITY

ELIGIBLE PROJECTS

1. On-road and off-road facilities for pedestrians, bicyclists, and other non-motorized forms of transportation
2. Infrastructure-related projects and systems that will provide safe routes for non-drivers to access daily needs
3. Conversion of abandoned railroad corridors for trails
4. Construction of turnouts, overlooks, and viewing areas
5. Community improvement activities
6. Environmental mitigation activities
7. Safe routes to school program



ON- AND OFF-ROAD FACILITIES FOR NON-MOTORIZED FORMS OF TRANSPORTATION



- Sidewalks, Crosswalks, Curb Ramps
- Bicycle Infrastructure
- Pedestrian & Bicycle Signals

ELIGIBILITY

INELIGIBLE ACTIVITIES:

- Replacement or reconstruction of existing facilities.
- Routine maintenance.

ON- AND OFF-ROAD FACILITIES FOR NON-MOTORIZED FORMS OF TRANSPORTATION (CONT'D.)



- Traffic Calming
- Safety Related Infrastructure, Pedestrian Level Lighting
- ADA Compliance Required!

ELIGIBILITY

INELIGIBLE ACTIVITIES:

- Routine maintenance.
- Landscaping only projects.

INFRASTRUCTURE RELATED PROJECTS AND SYSTEMS TO PROVIDE SAFE ROUTES FOR NON-DRIVERS



- Children
- Older Adults
- Individuals with Disabilities



ELIGIBILITY

CONVERSION OF ABANDONED RAILROAD CORRIDORS

- Trails for pedestrians, bicycles, and other non-motorized users

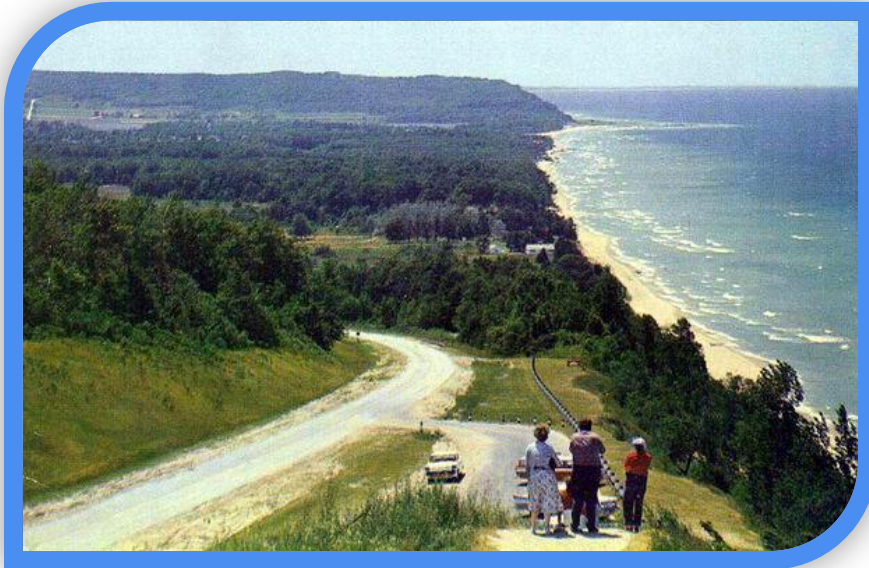


ELIGIBILITY

INELIGIBLE ACTIVITIES:

- Acquisition of corridor or easement.
- Routine maintenance of existing corridors.

CONSTRUCTION OF TURNOUTS, OVERLOOKS, AND VIEWING AREAS



- Includes related lighting, interpretation, and pedestrian amenities

ELIGIBILITY

INELIGIBLE ACTIVITIES:

- Acquisition of easement or site.
- Development of tourist/welcome center.
- Landscaping only.

COMMUNITY IMPROVEMENT ACTIVITIES



- Inventory, control, or removal of outdoor advertising
- Preservation and rehabilitation of historic transportation facilities
- Vegetation management to improve roadway safety, prevent invasive species, and provide erosion control
- Archaeological activities relating to impacts from implementation of a transportation project

ELIGIBILITY

INELIGIBLE ACTIVITIES:

- Creation of transportation museums.
- Archaeological planning.

ENVIRONMENTAL MITIGATION ACTIVITIES




- Pollution prevention
- Pollution abatement
- Mitigation to address:
 - Stormwater management and control
 - Prevention of water pollution related to highway construction or runoff
 - Reduction in vehicle-caused wildlife mortality
 - Restore and maintain connectivity among terrestrial or aquatic habitats

ELIGIBILITY

OTHER INELIGIBLE PROJECTS

The following activities are NOT included:

1. Pedestrian and bicycle safety and education **(except those targeting children in grades K-8 under SRTS)**
 2. Historic preservation as an independent activity
 3. Promotional activities **(except those targeting children in grades K-8 under SRTS)**
 4. General recreation and park facilities: playground equipment, sports fields, campgrounds, picnic areas and pavilions, etc.
 5. Projects in 5 year work program
 6. Recent construction
- 

APPLICATION PROCESS

WHERE TO FIND D4 APPLICATION INFO



Florida Department of
TRANSPORTATION

[E-Updates](#) | [FL511](#) | [Mobile](#) | [Site Map](#)

Search FDOT...



[Home](#) [About FDOT](#) [Contact Us](#) [Maps & Data](#) [Offices](#) [Performance](#) [Projects](#)

Production Support

Production Support / Local Agency Program (LAP) / D4 LAP

D4 LAP



District Four Local Agency Programs

Christine Fasiska
Local Program Administrator
(954) 777-4480

Helen James (interim)
Broward County Program Coordinator
(954) 733-7233

Sunshine Cayubit
Palm Beach County Program Coordinator
(954) 777-4691

Carlos Lemus
Martin, St. Lucie, and Indian River Counties Program
Coordinator
(954) 777-4522

CLICK
HERE

District Four Best Management Practices

- 2016 Transportation Alternatives Program (TAP) Application Materials
- 2016 Transportation County Incentive Grant Program (CIGP) Application Materials
- 2016 Small County Outreach Program (SCOP) Application Materials
- 2016 Transportation Regional Incentive Program (TRIP) Application Materials
- Construction and CEI Resources
- [Link to D4 LAP Certification Materials](#)
- LAP Project Kick-Off Package

Website:

<http://www.dot.state.fl.us/projectmanagementoffice/Districts/D4LAP/D4LAP.shtm>

APPLICATION PACKAGE



Completed Application Checklist



Completed Application



Aerial Location Map



Scope of Work



Typical Section

The application announcement includes formats for each.

APPLICATION
PROCESS

APPLICATION PACKAGE (CONT'D.)



Right-of-Way Ownership Verification



Plats, Deeds, Prescriptions, Certified Surveys and/or Easements



Detailed Cost Estimate Spreadsheet

(Prepared and Signed by a Professional Engineer
the Agency's Engineering Office)

from

The application announcement includes formats for each.

APPLICATION
PROCESS

APPLICATION PROCESS

- Fill out the standard application with:
 - General Information
 - Selection of at least one Qualifying Activity
 - Project Description
 - Location Map
 - Detailed Scope of Work
 - Typical Section
 - Right-of-Way Verification
 - Right-of-Way Documents (Maps, Plats, Deeds, etc.)
 - Related Project Work Phases (Previous Work Completed or Underway)
 - Detailed Cost Estimate (PREPARED AND SIGNED BY A PROFESSIONAL ENGINEER FROM THE LOCAL AGENCY'S ENGINEERING OFFICE)

RIGHT OF WAY

- No Right-of-Way Acquisition is permitted (including easements)
- Public ownership must be identified at time of application
- Application must include Right-of-Way Maps, Plats, Deeds, Prescriptions, Certified Surveys, and/or Easements to document ownership

APPLICATION PROCESS: PROJECT IMPLEMENTATION

- Application is to include method of design and CEI
 - In-house; FDOT Pre-qualified; Non-FDOT pre-qualified
- All Design and CEI work on critical projects must be performed by a FDOT pre-qualified consultant
 - Critical projects are those greater than \$10 million, include work on a structure, or are on the state highway system

APPLICATION
PROCESS

- Design and CEI consultants shall not be the same

COST ESTIMATE

- TAP project funds requested must be at least \$250,000
- The cost estimate is to be prepared and signed by a Professional Engineer from the Local Agency's Engineering Office
- TAP \$\$ used to fund Construction, FDOT In-house Support Activities, and FDOT CEI Oversight

COST ESTIMATE (CONT'D.)

- Local Funds will be needed for all non-eligible items, contingency activities, and any costs in excess of the awarded TAP allocations
- REMEMBER: A project becomes “federalized” as soon as there is any intent to use federal funds in any phase
- A “federalized” project must follow federal regulations under the Federal Uniform Relocation Assistance and Acquisition Policies

Act

APPLICATION
PROCESS

COST ESTIMATE (CONT'D.)

- Links to the FDOT Basis of Estimates Manual and Historical Cost Information have been included on the application
 - Every effort should be made to create the cost estimate based on standard FDOT Pay Items
 - Standard FDOT Pay Items are required for Critical Projects

COST ESTIMATE (CONT'D.)

Basis of Estimates Manual



Florida Department of
TRANSPORTATION

[E-Updates](#) | [FL511](#) | [Mobile](#) | [Site Map](#)

Search FDOT...

[Home](#) [About FDOT](#) [Contact Us](#) [Maps & Data](#) [Offices](#) [Performance](#) [Projects](#)

Program Management

Program Management / Estimates

Basis of Estimates Manual



2015 Basis of Estimates Manual

The 2016 BOE available through DQE and the Designer Interface is under development.
The DRAFT 2016 BOE may be used, or contact the BOE Coordinator for assistance.

- Registration for updates is available through the [Contact Database](#).
- Check the [Estimates Bulletins](#), and [Roadway Design Bulletins](#) for updates
- Contact [Melissa Hollis](#), Basis of Estimates Coordinator by e-mail or submit [Comments and Corrections](#) to report any errors.

Website:

<http://www.dot.state.fl.us/programmanagement/Estimates/BasisofEstimates/BOEManual/BOEOnline.shtm>

COST ESTIMATE (CONT'D.)

Historical Cost and Other Information



Florida Department of
TRANSPORTATION

[E-Updates](#) | [FL511](#) | [Mobile](#) | [Site Map](#)

Search FDOT...

[Home](#) [About FDOT](#) [Contact Us](#) [Maps & Data](#) [Offices](#) [Performance](#) [Projects](#)

Program Management

Program Management / Estimates

Historical Cost and Other Information



Greg Davis, State Estimates Engineer
Phone: (850) 414-4170
Fax: (850) 414-4199

Pay Item Cost History - (Averages below represent bid prices on Construction projects only)

Cost Per Mile Models for [Long Range Estimates](#) are available on the LRE page.

The reports below can be ran in either Adobe PDF or Microsoft Excel 2003 or higher. [Free download.](#) [Free viewer](#)



Website:

<http://www.dot.state.fl.us/specificationsoffice/Estimates/HistoricalCostInformation/HistoricalCost.shtm>

COST ESTIMATE (CONT'D.)

- Fill out the detailed cost estimate in Excel

[illegible]

COST ESTIMATE (CONT'D.)

Fill out the detailed cost estimate in Excel

ENGINEERS COST ESTIMATE											
FMR123456-1-58-01 Project Title: XXXX Date: XXXX											
Pay Item Number*	Pay Item Description*	FHWA Participating				FHWA non-participating (Local Funds)				Total Quantity	Total Engineer's Cost
		Quantity	Unit	Engineer's Unit Cost	Engineer's Subtotal Cost	Quantity	Unit	Engineer's Unit Cost	Engineer's Subtotal Cost		
	Rightway										

ENGINEERS COST ESTIMATE

FMR123456-1-58-01

Project Title: XXXX

Date: XXXX

FHWA Participating				FHWA non-participating (Local funds)				Total Quantity	Total Engineer's Cost
Quantity	Unit	Engineer's Unit Cost	Engineer's Subtotal Cost	Quantity	Unit	Engineer's Unit Cost	Engineer's Subtotal Cost		
			\$ -				\$ -	0	\$ -
			\$ -				\$ -	0	\$ -

		FHWA Funds for Construction		Local Funds for Construction		Subtotal	
ROOT IN-HOUSE DESIGN SUPPORT (Phase I)	1	LS	\$5,000.00	1	LS	\$5,000.00	
ADDITIONAL ROOT IN-HOUSE DESIGN SUPPORT FOR CRITICAL PROJECTS	0	LS	\$2,000.00	0	LS	\$2,000.00	
ROOT IN-HOUSE CONSTRUCTION SUPPORT (Phase II)	1	LS	\$5,000.00	1	LS	\$5,000.00	
ADDITIONAL ROOT IN-HOUSE CONSTRUCTION SUPPORT FOR CRITICAL PROJECTS	0	LS	\$2,000.00	0	LS	\$2,000.00	
LOCAL FUNDS FOR DESIGN							
CONTRACT PREPARE (REQUIRED)							
TRANSIT RELATED PROJECTS (30% F&A ADMINISTRATION F&A)							
CONSTRUCTION ENGINEERING & INSPECTION ACTIVITIES (CEI) (NO MORE THAN 12% OF ELIGIBLE ITEMS) (Phase III) (Optional)	1	LS	12%	1	LS	12%	
ROOT OVERSIGHT (CEI) (1% OF TOTAL CONSTRUCTION COST ESTIMATE) (Phase III) (REQUIRED)	1	LS	1%	1	LS	1%	
			\$ 10,000.00			\$ 10,000.00	
							\$ 10,000.00

Projects on the State Highway System and Critical Projects SHOULD utilize ROOT pay item numbers and descriptions.

Non-participating items:

- Mowing & other removal
- Engineering work, Optional services, Survey, Video Inspection, MOT plans preparation, As-built/record drawings
- Utility work - this includes, but is not limited to: valve adjustments, utility relocations, F&A power pole relocations, AT&T directional bore, etc.
- Contingency

Other elements may be non-participating; the ones listed above are the commonly used pay items that are non-participating. If you have any questions regarding an eligible or non-participating item, please contact us.

Prepared by:	PE Number:
Name: _____	Signature: _____ Date: _____
Reviewed by:	
Name: _____	Signature: _____ Date: _____
Approved by (Agency Responsible Charge):	
Name: _____	Signature: _____ Date: _____

COST ESTIMATE (CONT'D.)

- On the next tab of the spreadsheet, the following spreadsheet is generated
- Copy and paste it into the application

Item Description	Cost \$
*(A) Total Construction Cost Estimate ⁽¹⁾	\$0
*(B) Cost Estimate of Eligible (participating) items ⁽²⁾	\$0

Funding Breakdown	Fund Source	Cost \$
*(C) FDOT In-House Design Support (phase 31) ⁽³⁾ or *(D) (Critical projects only) FDOT In-House Design Support (phase 31) ⁽³⁾	TAP	\$5,000.00 or \$7,000.00
*(E) FDOT In-House Construction Support (phase 61) ⁽³⁾ or *(F) (Critical projects only) FDOT In-House Construction Support (phase 61) ⁽³⁾	TAP	\$5,000.00 or \$7,000.00
*(G) TAP funds requested for Construction (phase 58)	TAP	\$0
*(H) Local Funds for Construction (phase 58)	LF	\$0
*(I) Local Funds for Contingency (required)	LF	\$0
*(J) TAP funds requested for Construction Engineering & Inspection (CEI) (phase 68 - optional) ⁽⁴⁾	TAP	\$0
*(K) Local Funds for Construction Engineering & Inspection (CEI) ⁽⁴⁾	LF	\$0
*(L) Transit Related projects FTA 10% administrative fees ⁽⁵⁾	LF	\$0
*(M) FDOT Oversight CEI (3% of TOTAL Construction Cost) (phase 62) ⁽⁶⁾	TAP	\$0

Funding Summary	
*(N) Total TAP funds	\$0
*(O) Total LF funds	\$0
*(P) Total Funds	\$0

*Letters before the descriptions in the cost estimate above relate to the detailed cost estimate spreadsheet (Cost_Estimate.xlsx) and should match the corresponding figures exactly.

** Use of the term TAP represents the actual funding codes of TALT, TALU and TALL.

COST ESTIMATE (CONT'D.)

All projects must include the following, to be paid for with TAP funds:

- \$5,000* for FDOT In-House Design Support (Phase 31)
- \$5,000* for FDOT In-House Construction Support (Phase 61)
 - * **Critical** projects will require \$7,000 each for phase 31 and 61.
- 3% FDOT Oversight of CEI (Phase 62)
 - Based on the ENTIRE PROJECT COST, including Local Funds added
- These phases make the TAP Program self-sustaining


COST ESTIMATE (CONT'D.)

- If applying for CEI funds (Phase 68), you **MUST** request at the time of application.
- If you do not, you cannot add at a later date!
- There is a default of 12% of construction costs on the spreadsheet

SAFE ROUTES TO SCHOOLS (SRTS)

PROCESS FOR SAFE ROUTES TO SCHOOL (SRTS)

APPLICATIONS

1. Fill out the basic information on the application and identify your project as Safe Routes to School (SRTS)
 2. Fill out the appropriate SRTS application: infrastructure or non-infrastructure
 3. District evaluation team will determine eligibility
 4. Safety office reviews SRTS components
 5. All SRTS candidate projects sent to Central Office for Review
 6. Un-funded projects may receive funding from Central Office
- 

IMPLEMENTATION

PROJECT SCHEDULES

- If your project is selected, deemed eligible, and programmed you will receive a pdf of the expected schedule with key milestone dates
- Projects are scheduled for a specific day and month – NOT just the year
- Monthly schedule updates are required to ensure the project is on track
- Agency Submittal items identified
 - Preliminary Submittal
 - 30% Plan Submittal (INITIAL)
 - 90% Plan Submittal (CONSTRUCTABILITY)
 - 100% Plans and Bid Documents (PRODUCTION)
- Schedule float goal = zero
- Negative Float > 2 months – must meet with us
- Need your help for projects with more than 40 days of negative float.
- Inability to enter into an agreement in the programmed year, FDOT will release funds to District Funds
- If you miss your Production Date, you could lose the funding

SCHEDULE: 2016 TAP APPLICATION FOR FISCAL YEAR 19/20 PROJECTS

Based on MPO Schedule - Applications due to MPO

May 2, 2016 - MPO submits preliminary ranking to FDOT

July 29, 2016 - FDOT returns eligibility determinations to MPO

September 30, 2016 – MPO submits final rankings to FDOT for programming

FDOT CONTACT PERSONNEL

Christine Fasiska

Local Program Administrator 954-777-4480

Sabrina Aubery

Program Administration Engineer 954-777-4585



Palm Beach Metropolitan Planning Organization

Transportation Planning for the Palm Beaches



Transportation Alternatives Program Process

2016 Application Cycle

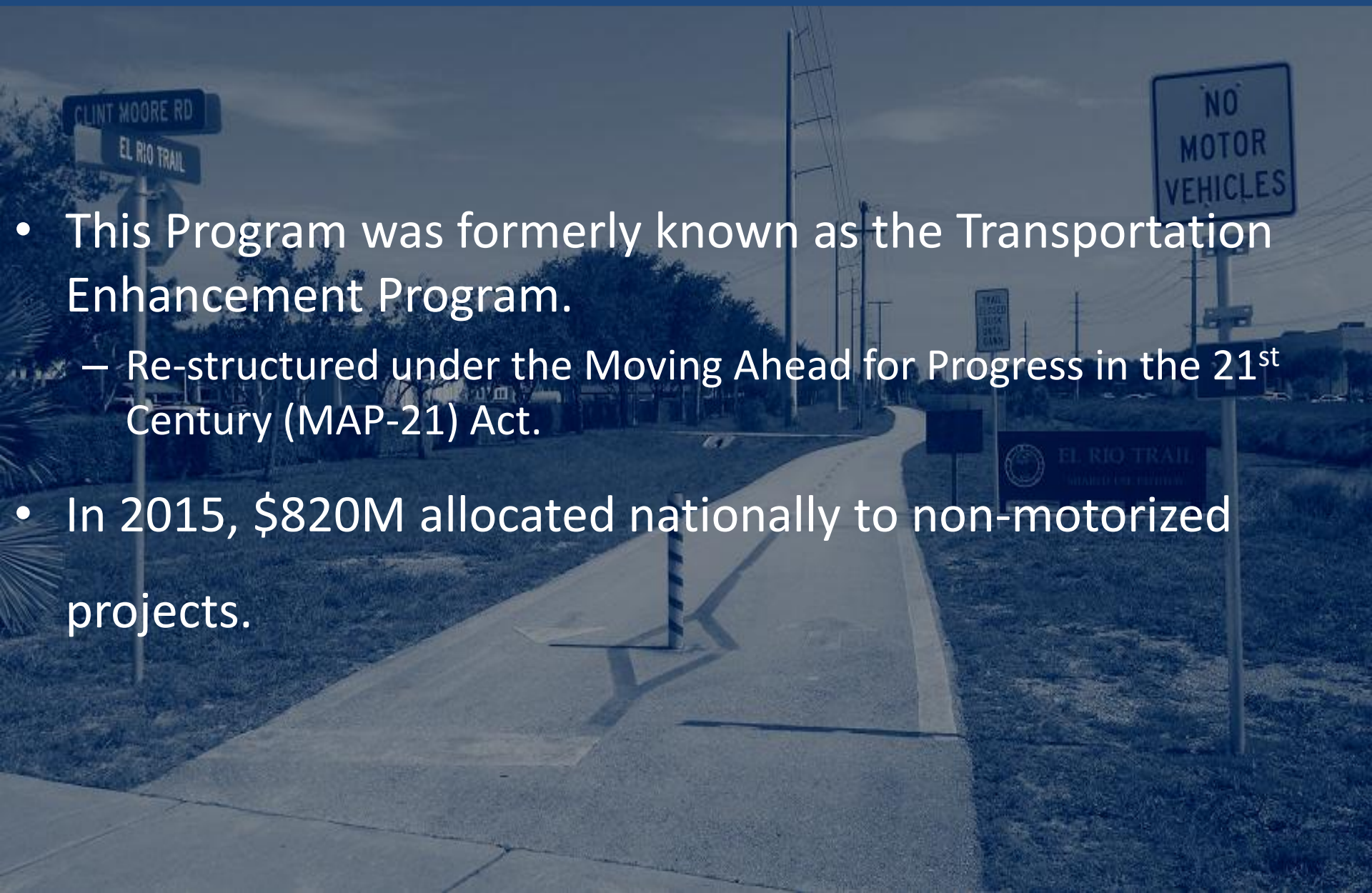
Applicant Workshop
January 28, 2016

www.PalmBeachMPO.org

2300 North Jog Road • 4th Floor • West Palm Beach • FL 33411 • 561-684-4170

History of the Transportation Alternatives Program (TAP)

- This Program was formerly known as the Transportation Enhancement Program.
 - Re-structured under the Moving Ahead for Progress in the 21st Century (MAP-21) Act.
- In 2015, \$820M allocated nationally to non-motorized projects.



2016 Application Cycle Estimated FY 19 Funding

Anticipate at least \$3M of federal funds to implement various non-motorized projects in Palm Beach County

Historical Funding Allocations to TAP		
2013	2014	2015
\$ 1.8 M	\$ 3.15 M	\$ 3.18 M

2016 Application Calendar

January 28th

- Applicant Workshop

February – March

- Staff available to discuss application submittals

April 1st

- Applications due
- Applications screened and scored

May 4th

- Bicycle Greenway Pedestrian Advisory Committee (BGPAC) Review

June 30th

- FDOT D4 returns Eligibility Determinations.

July 1st -31st

- Applicants to Resolve Outstanding Eligibility Issues.

Final adoption in
September

- Committee reviews draft priority ranking.
- MPO submits Final Ranking.

October 1st

- MPO staff submits final priority list to FDOT.



Eligible Projects

1. On-road and off-road facilities for pedestrians, bicyclists, and other non-motorized forms of transportation
2. Infrastructure-related projects and systems that will provide safe routes for non-drivers to access daily needs
3. Conversion of abandoned railroad corridors for trails
4. Construction of turnouts, overlooks, and viewing areas
5. Community improvement activities
6. Environmental mitigation activities
7. Safe routes to school (infrastructure and non- infrastructure)

PROJECT IMPLEMENTATION

- Option 1 -Local Government Designs and Constructs project via LAP Agreement - (requires LAP certification)
 - Funding capped at cost estimate, reimbursement of costs
- Option 2 -FDOT Designs and Constructs project on State Highway System (Local Government funds design)
- Option 3 - FDOT Designs and Constructs project off State Highway System (Local Government funds design)
- Option 4 - FDOT Designs and Constructs project
 - MPO Funds project
 - Local Government may provide input into the design

PROJECT SCORING

L RTP Value	L RTP Category	Criteria	Value	Scoring	Max
1 & 6	Safety, Security and Complete Streets	Project improves non-motorized safety by providing*:	buffered bike lanes - 4	8	25
			10'+ shared-use pathways - 3	6	
			designated bike lanes - 2	4	
			new sidewalks - 1	2	
		Project improves safety and convenience for non-motorized users (must demonstrate).		10	
		Project mitigates impacts of sea level rise		5	
2	Maintenance	Project improves infrastructure in unacceptable condition with widespread advanced signs of deterioration; potential imminent failure		7	10
		Project improves infrastructure in poor condition and mostly below standard, approaching the end of its service life, exhibiting significant deterioration and of strong risk of failure		5	
		Project improves non-motorized and/or transit infrastructure or improves transit service level		3	
4	Maximize MPO Funds	Local Implementation via Local Agency Program (LAP) Agreement		10	10
		FDOT Implementation on State Highway System with Local Funding for design		7	
		FDOT Implementation with Local Funding for design		3	
5	Equity	Median HH income within 1 mile of project vs PBC median income (\$52,806)	< 60%	5	5
			60 - <80%	3	
			80% - <100%	1	
		Traditionally underserved population percentage within 1 mile of project	>80%	5	5
			>60 - 80%	4	
			>40% - 60%	3	
			>20% - 40%	2	
			5-20%	1	
7a	Local Support	Project is endorsed by members of benefit area (HOA, POA, petition, etc.)		5	10
7b	Environmental	Project is unlikely to have adverse environmental impacts		5	
9	Non-motorized Connectors	Project improves non-motorized facilities at an interchange, bridge, or railroad crossing		6	10
		Project improves non-motorized connectivity to facilities on PBC Thoroughfare Map within 2 miles of a transit hub		4	
10	Efficient Transit	Project improves service at a transit hub		10	15
		Project reduces transit travel time between transit hubs		5	
	Proximity Benefit	Project is within 2 miles of a school walk zone		5	10
		Project is within 1 mile of a shopping center		3	
		Project is within 1 mile of a recreational center or park		2	

100

Note:

*Non-Motorized Point System

1. Multiply length (up to 2 miles) by factor shown in value column

Transportation Alternatives Program CONTACT INFORMATION

Franchesca Taylor, Senior Planner

FTaylor@PalmBeachMPO.org

561-478-5713

<http://www.palmbeachmpo.org/plans-resources/mpo-funding-programs>





SAFE ROUTES TO SCHOOL (SRTS)

FLORIDA DEPARTMENT OF TRANSPORTATION



PROGRAM OVERVIEW



As of December 1, 2015 the Florida Safe Routes to School program once again has standalone funds - \$7 million a year for the state.

This is in addition to TA funds which SRTS type projects are still eligible for.

Florida is seeking applications to plan, develop, implement and evaluate eligible Safe Routes to School (SRTS) *infrastructure projects.*



PROGRAM HIGHLIGHTS



Standalone funding estimated at \$7M per year.

High Schools eligible

Higher emphasis on “Hazardous Walking Condition” areas



DATES TO REMEMBER



December 1st,
2015

- Call for applications

March 31st
2016

- Applications due to your local FDOT District

September
2016

- Notification letters sent to applicants

October 2016

- Review guidelines/applications for edits and revisions



For more information regarding the program and guidelines,
please visit: www.srtsfl.org

FDOT Safe Routes to School Program CONTACT INFORMATION

Tracey Xie

Yujing.Xie@dot.state.fl.us

954 –777-4355

For more information regarding the program and guidelines,
please visit: www.srtsfl.org



Local Initiatives Program Process

2016 Application Cycle

Applicant Workshop
January 28, 2016

www.PalmBeachMPO.org

2300 North Jog Road • 4th Floor • West Palm Beach • FL 33411 • 561-684-4170

History of the Local Initiatives Program

- MPO's Long Range Transportation Plan (LRTP) - Identify projects or programs to be funded with reasonably anticipated revenue
- MPO members and communities – “Invest in local projects to support our activity centers”
- 2040 LRTP created “Local Initiatives” (LI) Program - Identify and fund worthy, low-cost, non-regionally significant transportation projects

2016 Application Cycle

FY 22 Estimated Funding

1. Anticipate \$17M of federal funds
2. FY17-21 FDOT Draft Tentative Work Program –
 - 7 unfunded LI projects with estimated need of \$9.3M
3. FY 17-21 Funding may be available to implement existing unfunded priorities

2016 Application Schedule

- December 7th Local Initiatives program kick-off
- **January 28th Workshop**
- February-March – MPO/Applicant consultations (encouraged!)
- April 1st - Online applications due
- April – MPO Staff screen applications (get clarifications)
- May 2nd – MPO Staff submits projects to FDOT
- July – Applicants must resolve outstanding issues identified by FDOT
- September – MPO Priority list to committees and Board
- October – MPO Staff submits MPO Priority List to FDOT

ELIGIBLE PROJECTS – TSM&O

- ◆ Intelligent Transportation System (ITS)
- ◆ Complete Streets
- ◆ Access Management
- ◆ Landscaping
- ◆ Signage and Lighting
- ◆ Pavement Striping
- ◆ Other Enhancements that improve the system

Intersection improvements include:

- ◆ ITS
- ◆ New Turn Lanes and Improved Striping
- ◆ New or Improved Traffic Signals
- ◆ Safety Improvements
- ◆ Other Enhancements that improve the system



ELIGIBLE PROJECTS – Transit Capital

- ◆ New or Improved Bus Shelters
- ◆ New or Improved Bus Pull-Outs
- ◆ Tri-Rail Station Improvements
- ◆ Park-and-Ride Facilities
- ◆ Maintenance Facilities
- ◆ Vehicle Purchases
- ◆ Other Enhancements to the System



ELIGIBLE PROJECTS – Non-motorized

- ◆ Buffered and Designated Bicycle Lanes
- ◆ Pedestrian Sidewalks
- ◆ Shared Use Bicycle and Pedestrian Facilities
- ◆ Greenway Corridors and Trails
- ◆ Supporting Facilities Such As Bicycle Racks, Water Fountains, and Lockers
- ◆ Other Enhancements to the System



ELIGIBLE PROJECTS – Freight

- ◆ Airport Off-Site Capacity Improvements
- ◆ Seaport Off-Site Capacity Improvements
- ◆ Railway Capacity Improvements
- ◆ Freight Logistics Projects
- ◆ Other Enhancements to the System



FREIGHT MOBILITY

PROJECT IMPLEMENTATION PLAN

- Option 1 -Local Government Designs and Constructs project via LAP Agreement - (requires LAP certification)
 - Funding capped at cost estimate, reimbursement of costs
- Option 2 -FDOT Designs and Constructs project on State Highway System (Local Government funds design)
- Option 3 - FDOT Designs and Constructs project off State Highway System (Local Government funds design)
- Option 4 - FDOT Designs and Constructs project
 - MPO Funds project
 - Local Government may provide input into the design

PROJECT SCORING

L RTP Value	L RTP Category	Criteria	Value	Scoring	Max
1 & 6	Safety, Security and Complete Streets	Project improves non-motorized safety by providing: buffered bike lanes - 4 10'+ shared-use pathways - 3 designated bike lanes - 2 new sidewalks - 1		8	15
				6	
				4	
				2	
		Project improves safety and convenience for users (project must demonstrate)		5	5
		Project improves performance of hurricane evacuation route		3	
		Project mitigates impacts of sea level rise		2	
2	Maintenance	Project improves infrastructure in unacceptable condition with widespread advanced signs of deterioration; potential imminent failure		7	10
		Project improves infrastructure in poor condition and mostly below standard, approaching the end of its service life, exhibiting significant deterioration and of strong risk of failure		5	
		Project improves non-motorized and/or transit infrastructure or improves transit service level		3	
3	TSM&O / TDM	Non-capacity project implements TSM strategies		7	10
		Non-capacity project implements TDM strategies		3	
		Capacity project improves Thoroughfare intersection(s) where critical sum > 1400		5	
		Capacity project expands fiber optic traffic signal network		3	
4	Maximize MPO Funds	Capacity project expands CCTV camera coverage area on principal arterials		2	5
		Local Implementation via Local Area Participation(LAP) Agreement or FTA Flex		5	
		FDOT Implementation on State Highway System with Local Funding for design		3	
5	Equity	Median HH income within 1 mile of project vs PBC median income (\$52,806)	< 60%	10	10
			60 - <80%	7	
			80% - <100%	3	
		Traditionally underserved population percentage within 1 mile of project	>80%	5	5
			>60 - 80%	4	
			>40% - 60%	3	
			>20% - 40%	2	
			5-20%	1	
7a	Local Support	Project is endorsed by members of benefit area (HOA, POA, petition, etc.)		5	10
7b	Environmental	Project will have positive environmental impacts (project must demonstrate)		5	
8	Regional Freight	Project improves capacity on congested SIS facility/connector or non-SIS truck route	v/c > 1.2	5	5
			v/c > 1.1	3	
			v/c > 1	1	
9	Non-motorized Connectors	Project improves efficient movement of freight in region		5	5
		Project improves non-motorized facilities at an interchange, bridge, or railroad crossing		6	
10	Efficient Transit	Project improves non-motorized connectivity to facilities on PBC Thoroughfare Map within 2 miles of a transit hub		4	10
		Project improves service at a transit hub		6	
		Project reduces transit travel time between transit hubs		4	10

100

Note:

Non-motorized Point System

1. Multiply length (up to 2 miles) by factor shown in value column

LOCAL INITIATIVE CONTACT INFORMATION

Luke Lambert, Senior Planner

www.PalmBeachMPO.org/

llambert@PalmBeachMPO.org

561-684-4114



MPO Funding Programs

FIND WHAT YOU'RE LOOKING FOR HERE...



BIKEPALMBEACH.ORG



CALENDAR



MEETINGS

PLANS & RESOURCES

MPO Transportation Plans

Currently Featured

MPO Funding Programs

MPO Documents

Resources & Data

Links

Glossary

Newsletter Archive

MPO FUNDING PROGRAMS

The Palm Beach MPO administers two competitive application processes annually for the funding of projects located within Palm Beach County. The application process commences in January, when the MPO posts online application materials.

Applications are ranked and recommended for funding by the MPO advisory committees and the MPO Board. Scoring criteria is based on the Goals, Objectives and Values of Directions 2040, the Palm Beach MPO's Long Range Transportation Plan. 2016 project applications to be recommended for funding will be included in the MPO's Project Priority List for Fiscal Years 2018-2022, anticipated for MPO adoption in mid-2016.

Criteria stated below are considered "draft" and are subject to updates of program guidelines and funding availability:

Transportation Alternatives (TA) Program

Program Overview

Established by MAP-21, the federal Transportation Alternatives Program is a cost-reimbursement program where projects are selected by the MPO but administered by the Florida Dept. of Transportation (FDOT). The program funds on- and off-road pedestrian and bicycle facilities, infrastructure for improving non-driver access to public transportation and enhanced mobility, community improvement activities, and environmental mitigation; recreational trail projects; safe routes to school projects; and projects for planning, designing, or constructing boulevards and other roadways largely in the right-of-way of former divided highways. Approximately \$3M has been allocated annually in recent years to fund Transportation Alternative (TA) projects.

Eligibility

- Includes projects and programs eligible for funding under the Safe Routes to School (SRTS) program
- Application requests are limited to a minimum of \$250,000 and a maximum MPO funding amount of \$750,000 for Transportation Alternatives (TA) or Safe Routes to School (SRTS) infrastructure applications. There is no minimum or maximum amount for SRTS non-infrastructure applications.
- Eligible applicants include municipal, county, state or federal agencies. Examples include local governments, regional transportation authorities, transit agencies, natural resource or public land agencies, school district or individual schools, etc. Eligible applicants for Safe Routes to School include public schools or school districts, private schools, government agencies, health departments, colleges and universities.
- Funds allocated for projects during the 2016 application process will be made available July 1, 2019.

Application Guidelines

- Applications must be submitted online via the MPO website. [Click to access.](#)
- Applications are to be submitted, reviewed and processed pursuant to the schedule. [Click to download.](#)
- Applications must include all required documents. [Click to download.](#)

Online Application Walk Through



Regional Greenways & Trails Plan

Palm Beach County

Multi-Use and Hiking Facilities

(Rev. 11/2015)

Other Resources

Regional Greenway Plan

