



Palm Tran Public Transportation System

Annual Palm Tran Update

Palm Beach MPO



July 2016

Current Palm Tran MPO Funded Projects

1. BCT/Palm Tran Easy Card Interface with MDT/SFRTA
2. Transit Signal Priority (TSP) Route 43 Project
3. Transit Signal Priority (TSP) Route 62 Project
4. Delray Beach Maintenance Facility

BCT/PalmTran Easy Card

(Interface with MDT/SFRTA)

- **Project #:** 4317611
- MPO Total Project Funding \$1.32 M
 - \$820K in FY 2015 / \$500K in FY 2013
 - \$5 million estimated for installation on entire fleet by 2018
- **Status:** Moving forward with revised Scope
 - Agreement with Broward, Miami-Dade, and SFRTA approved by Palm Beach BCC June 21, 2016
 - Inaugural Regional Transit Meeting held with Executive Directors June 29, 2016
- **Scope highlights:**
 - Will now include Mobile Ticketing as part of Phase 1 (originally Phase 2)
 - Accept MDT/SFRTA Easy Cards at point-of-contact
- **Estimated Timeline:**
 - Interlocal agreement with BCT, MDT, SFRTA for back-office mgmt—**PENDING**
 - Vendor selection (vendor to procure system) – August 2016
 - Notice to Proceed – September 2016



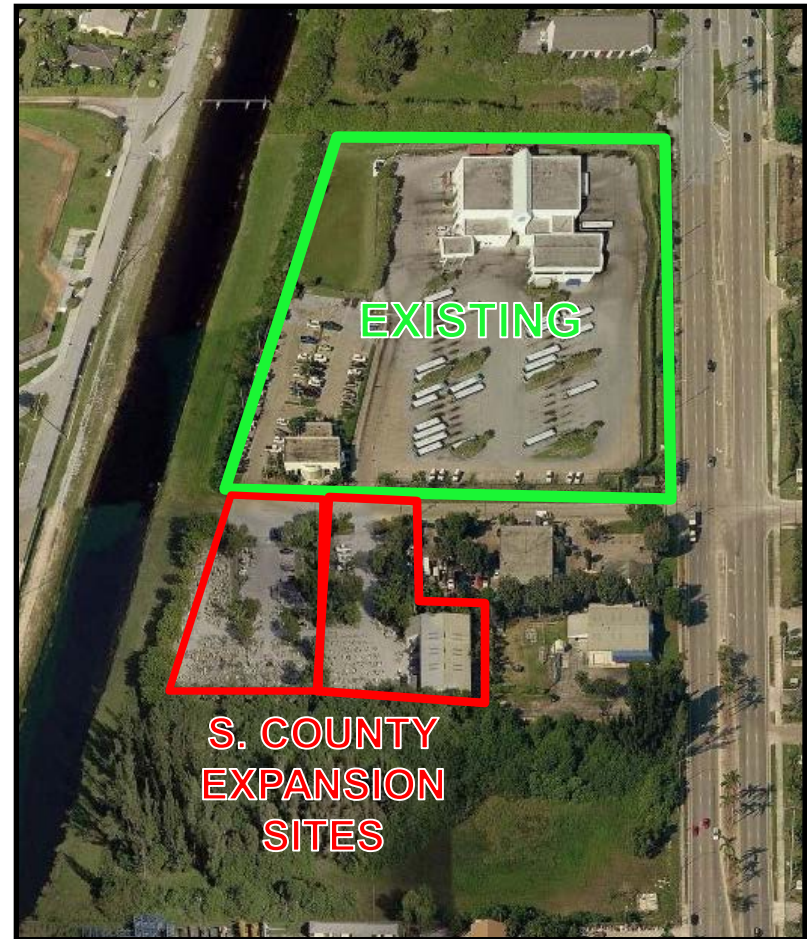
Transit Signal Priority Projects

- MPO Total Project Funding \$2.5 M
 - Okeechobee Blvd. (Route 43 - 4th highest ridership)
 - Lake Worth Rd. (Route 62 -5th highest ridership)
 - \$4 million estimated for total project installation by 2018
- Timeline
 - Tech requirements, Concept of Operations; part of scope finalization – **COMPLETED** (All parties assisted by HDR)
 - RFP scheduled to go out Fall 2016
 - Notice to Proceed –Winter 2016
 - Field Integration, Virtual Simulation, Traffic Management Center set-up (2017)
- Capital improvements
 - Bus transmitters/network database not needed (part of existing Palm Tran AVL)
 - Signal cabinets, new computer servers, fiber optic cable installation to link Palm Tran and Traffic Engineering
- Intended outcomes
 - Improved on-time performance on east-west routes



Delray Beach Operational Facility

- MPO Funding: \$1.5 M in FY 2016
 - Project Cost: \$ 9.8 M
- Location: South of NE 1st Street
(Across from existing S. County facility)
- Existing County Facility:
 - 3,742 sq. ft of admin. space
 - 12,506 sq. ft. of maintenance garage
 - Parking and layover capacity extremely constrained, 97 cars, 70 buses
- New Proposed Expansion (2.6 acres):
 - Allows for expansion of personnel and buses
 - Increases bus and employee parking
 - Estimated completion date: September 2018
 - 105 buses on existing site, 191 parking spaces on expansion site
 - Approx. 28,000 sq. ft additional admin. space
 - Additional bus lift – no change in sq. ft.



Delray Beach Operational Facility



Existing



Proposed





Thank You