

SR-9/I-95 @ Glades Road

FM No. 412420-4-32-01

April 6th, 2016

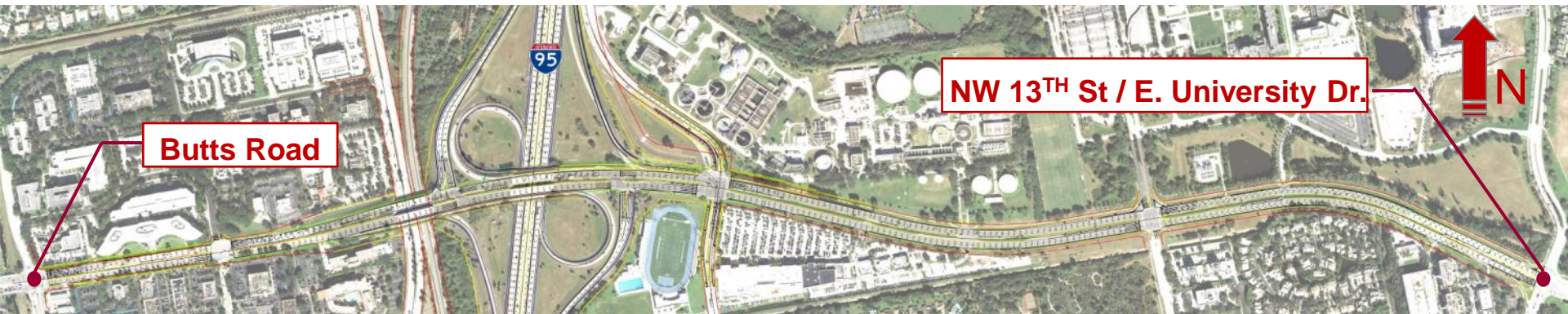


Project Limits



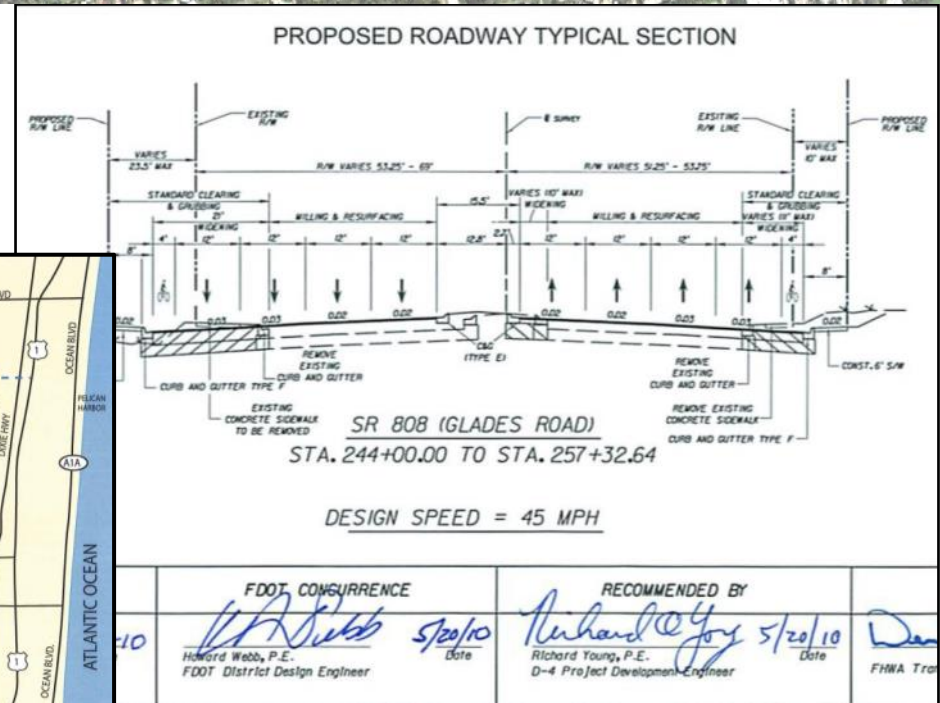
Project Overview

PD&E Concept

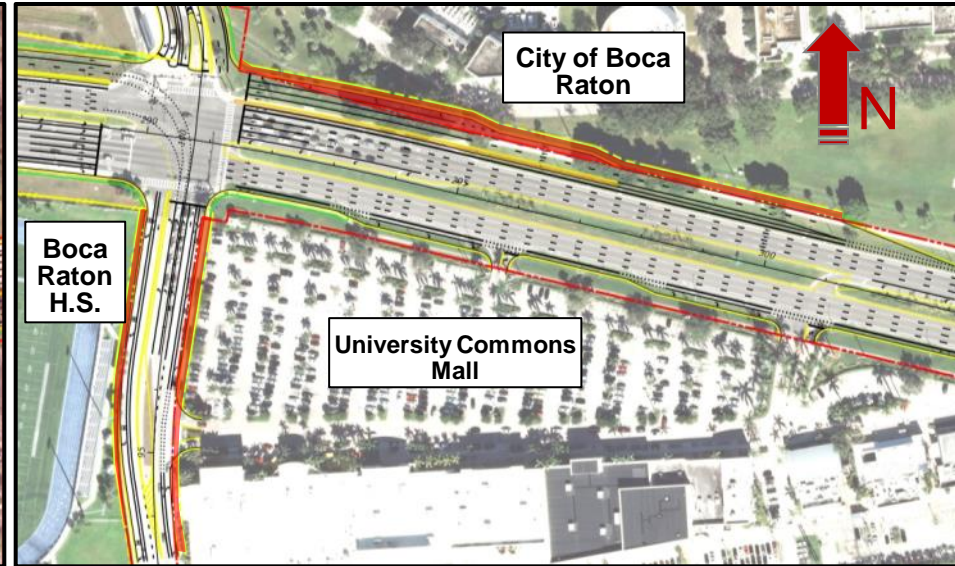
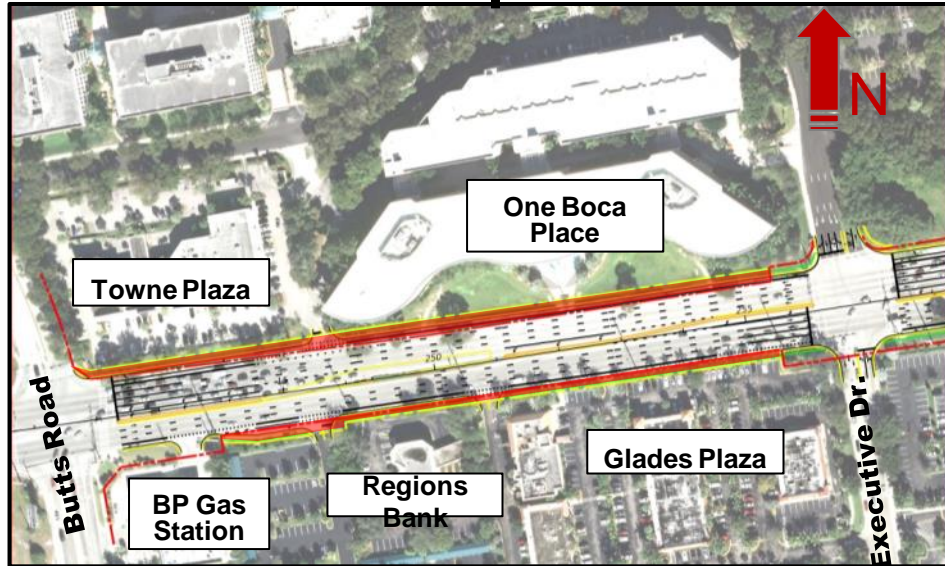


Commitments

- Continue Coordination with MPO, and local agencies
- Protect Endangered Species
- Provide Noise Abatement
- Address Contamination
- Coordinate Traffic Control Plan with City of Boca Raton and FAU



PD&E Concept



ADVANTAGES

- 8-Lane Section Addresses Traffic Needs

DISADVANTAGES

- Major RW Impacts
- Major Utility Impacts
- Requires three new bridges over I-95 and CSX Railroad
- Substandard Loop Ramp Geometry
- Not Consistent with the City of Boca Raton's Resolution 26-2014

PD&E Concept



ADVANTAGES

- 8-Lane Section Addresses Traffic Needs

DISADVANTAGES

- Major RW Impacts
- Major Utility Impacts
- Requires three new bridges over I-95 and CSX Railroad
- Substandard Loop Ramp Geometry
- Not Consistent with the City of Boca Raton's Resolution 26-2014

PD&E Concept

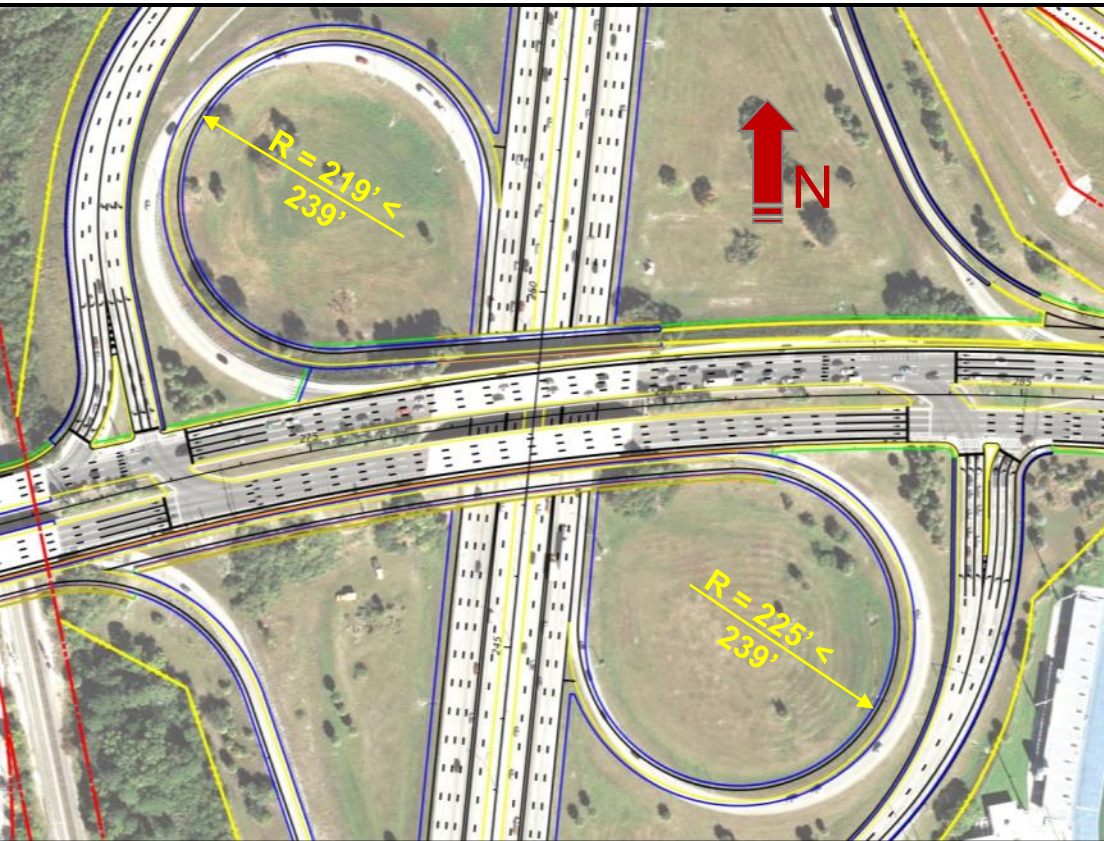
ADVANTAGES

- 8-Lane Section Addresses Traffic Needs

DISADVANTAGES

- Major RW Impacts
- Major Utility Impacts
- Requires three new bridges over I-95 and CSX Railroad
- Substandard Loop Ramp Geometry
- Not Consistent with the City of Boca Raton's Resolution 26-2014

PD&E Concept



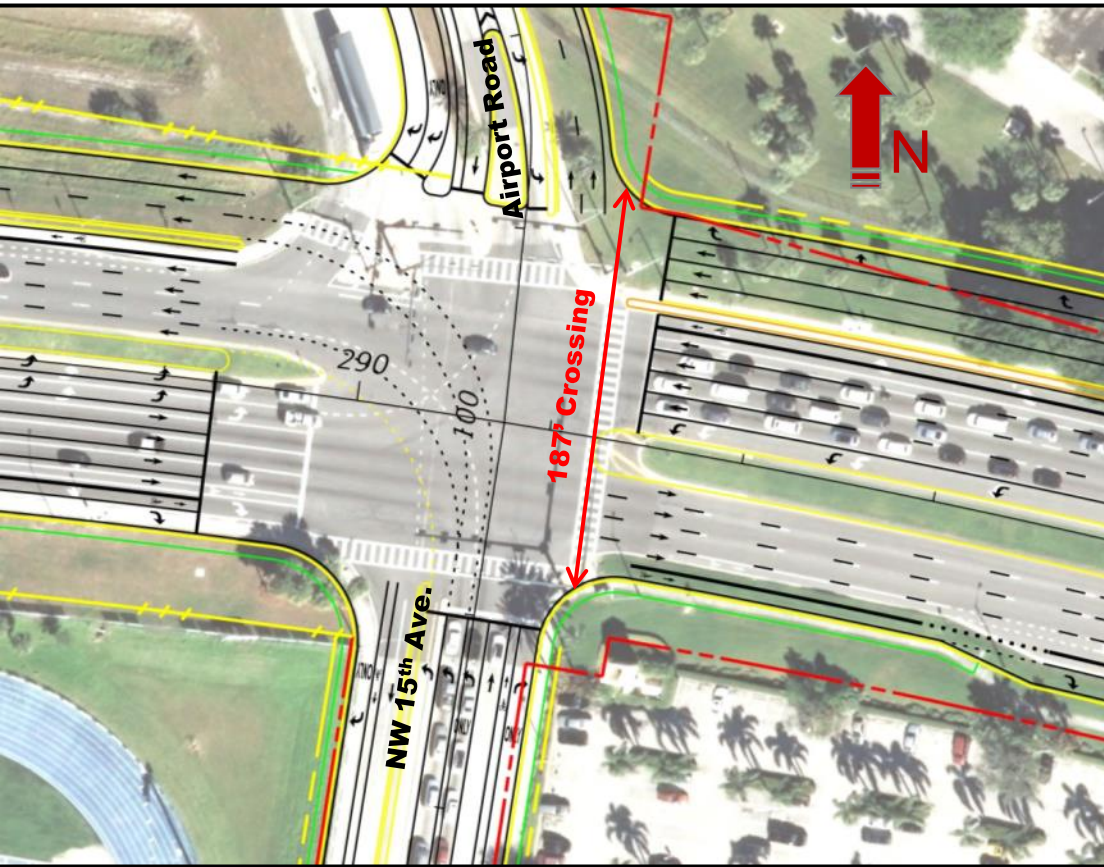
ADVANTAGES

- 8-Lane Section Addresses Traffic Needs

DISADVANTAGES

- Major RW Impacts
- Major Utility Impacts
- Requires three new bridges over I-95 and CSX Railroad
- **Substandard Loop Ramp Geometry**
- Does Not Address Pedestrian Needs
- Opposed by the City of Boca Raton

PD&E Concept



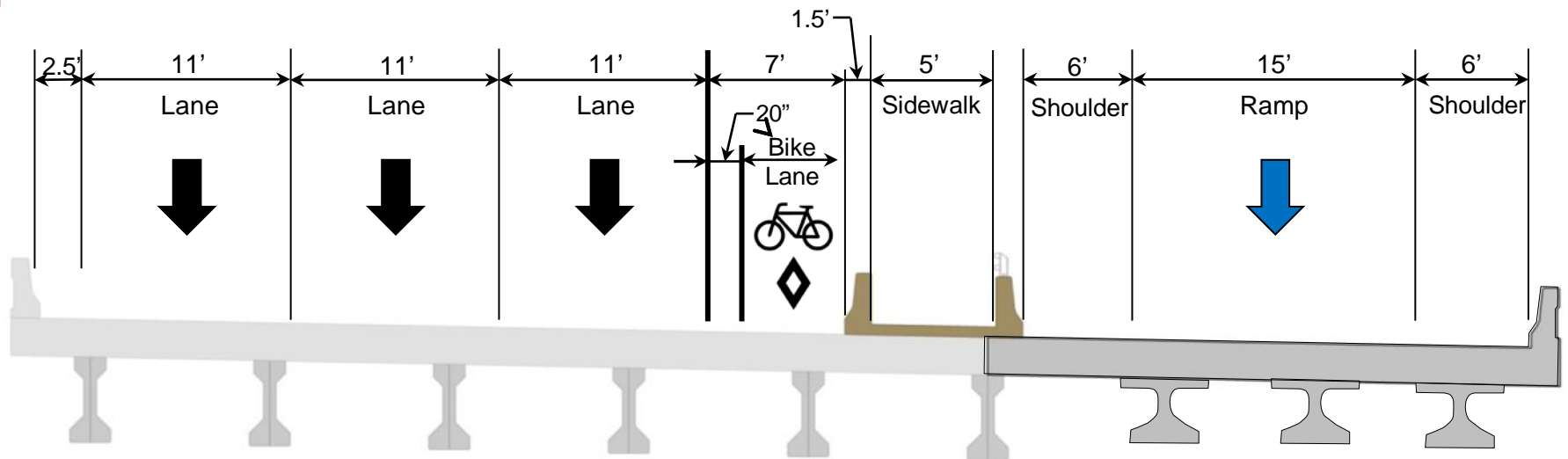
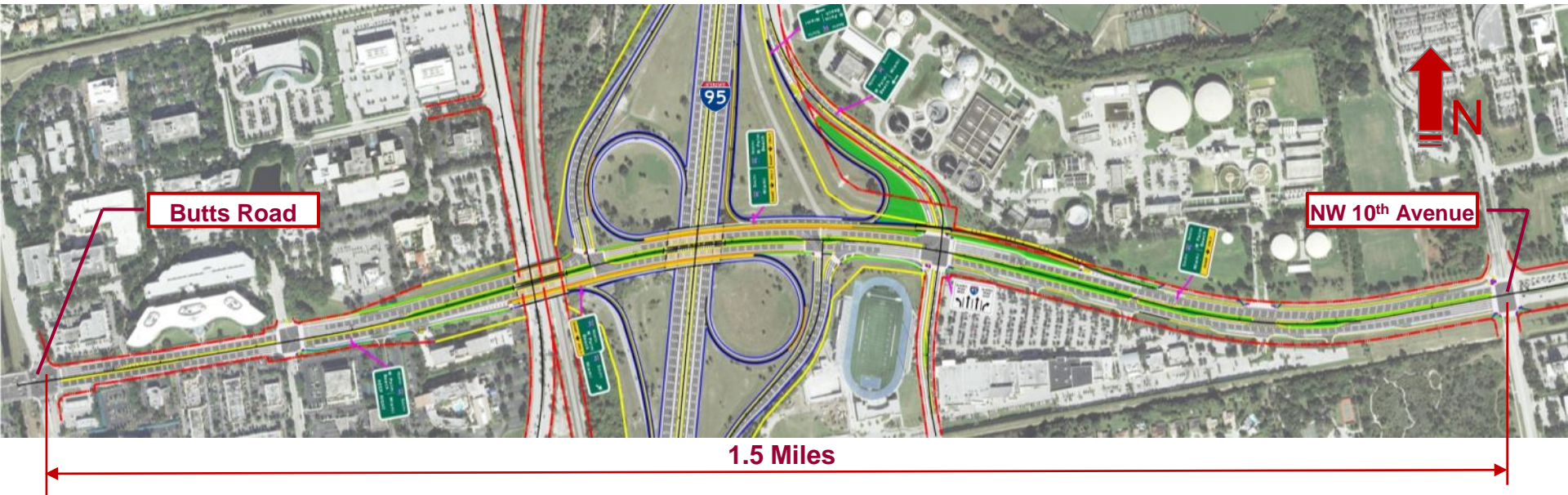
ADVANTAGES

- 8-Lane Section Addresses Traffic Needs

DISADVANTAGES

- Major RW Impacts
- Major Utility Impacts
- Requires three new bridges over I-95 and CSX Railroad
- Substandard Loop Ramp Geometry
- Does Not Address Pedestrian Needs
- Not Consistent with the City of Boca Raton's Resolution 26-2014

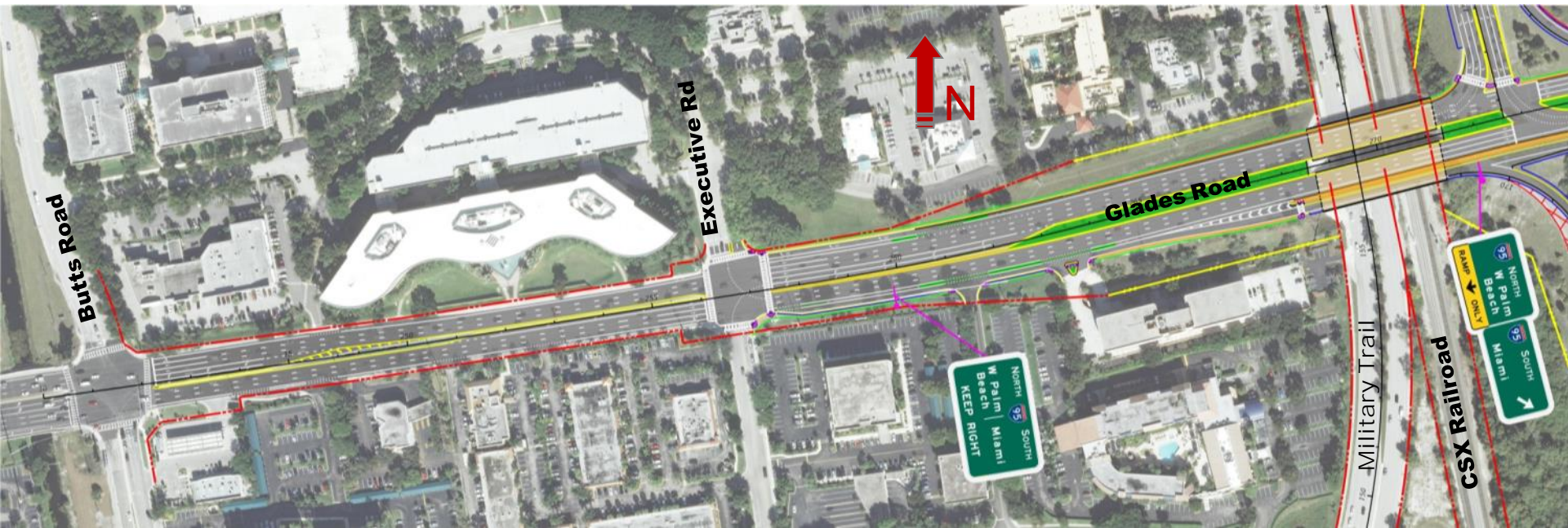
Preliminary Design Concept



Typical Section at the Bridges

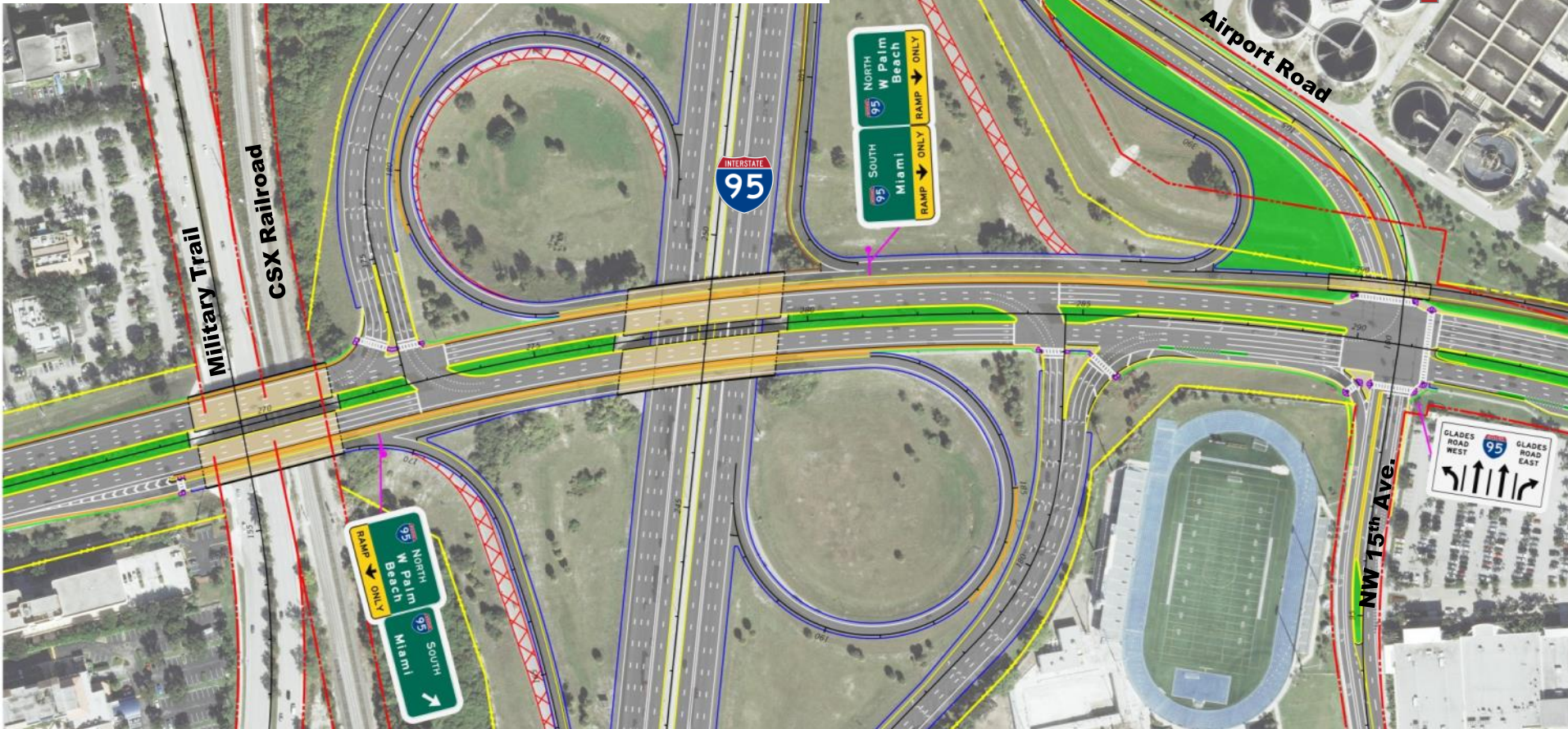
Preliminary Design Concept

- Addresses Level of Service Requirements
- No Right of Way Required West of Executive Rd.
- EB Ramp to I-95
- No New Bridges Required for I-95 or CSX
- Separates I-95 Bound Traffic from Glades Road Traffic
- Consistent with Spanish River/Yamato Rd SIJR
- Consistent with the I-95 Managed Lanes



Preliminary Design Concept

- Addresses Level of Service Requirements
- No Right of Way Required West of Executive Rd.
- EB Ramp to I-95
- No New Bridges Required for I-95 or CSX
- Separates I-95 Bound Traffic from Glades Road Traffic
- Bridge over Airport Road

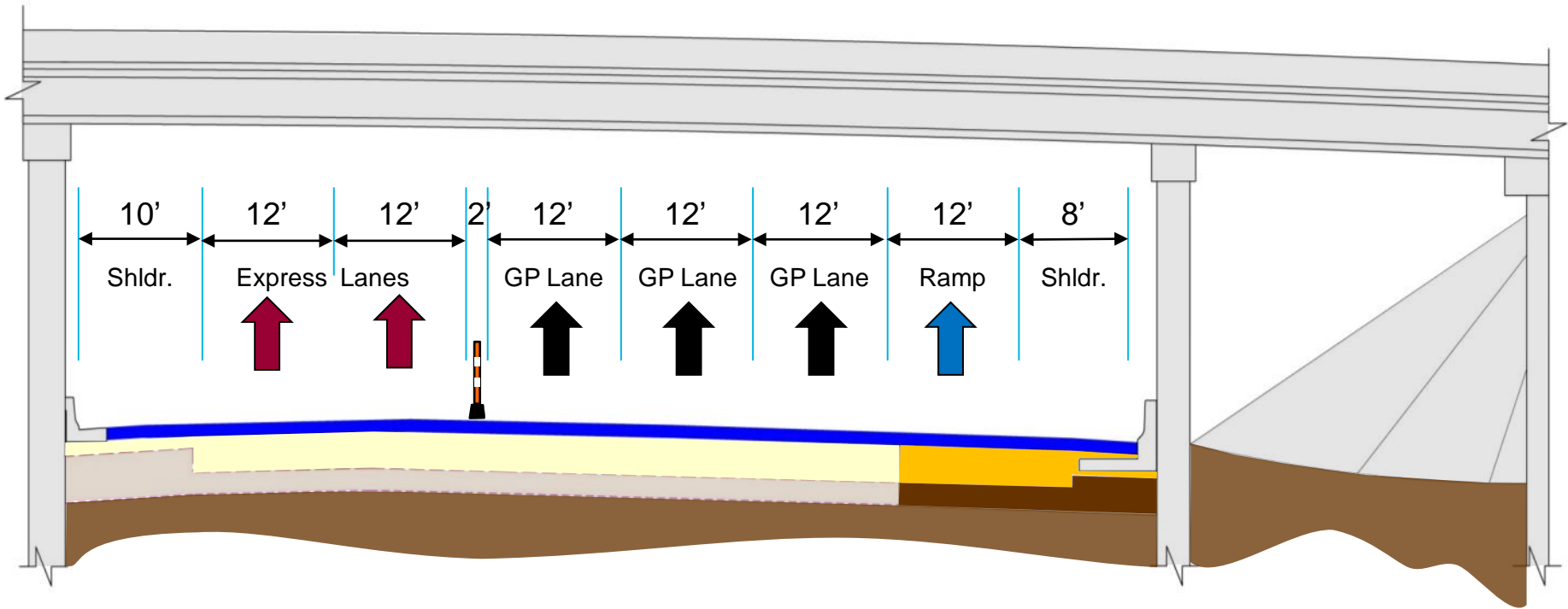


Preliminary Design Concept

- Addresses Level of Service Requirements
- No Right of Way Required West of Executive Rd.
- No New Bridges Required for I-95 or CSX
- Separates I-95 Bound Traffic from Glades Road Traffic
- Bridge over Airport Road
- **WB Entrance Ramp to I-95**

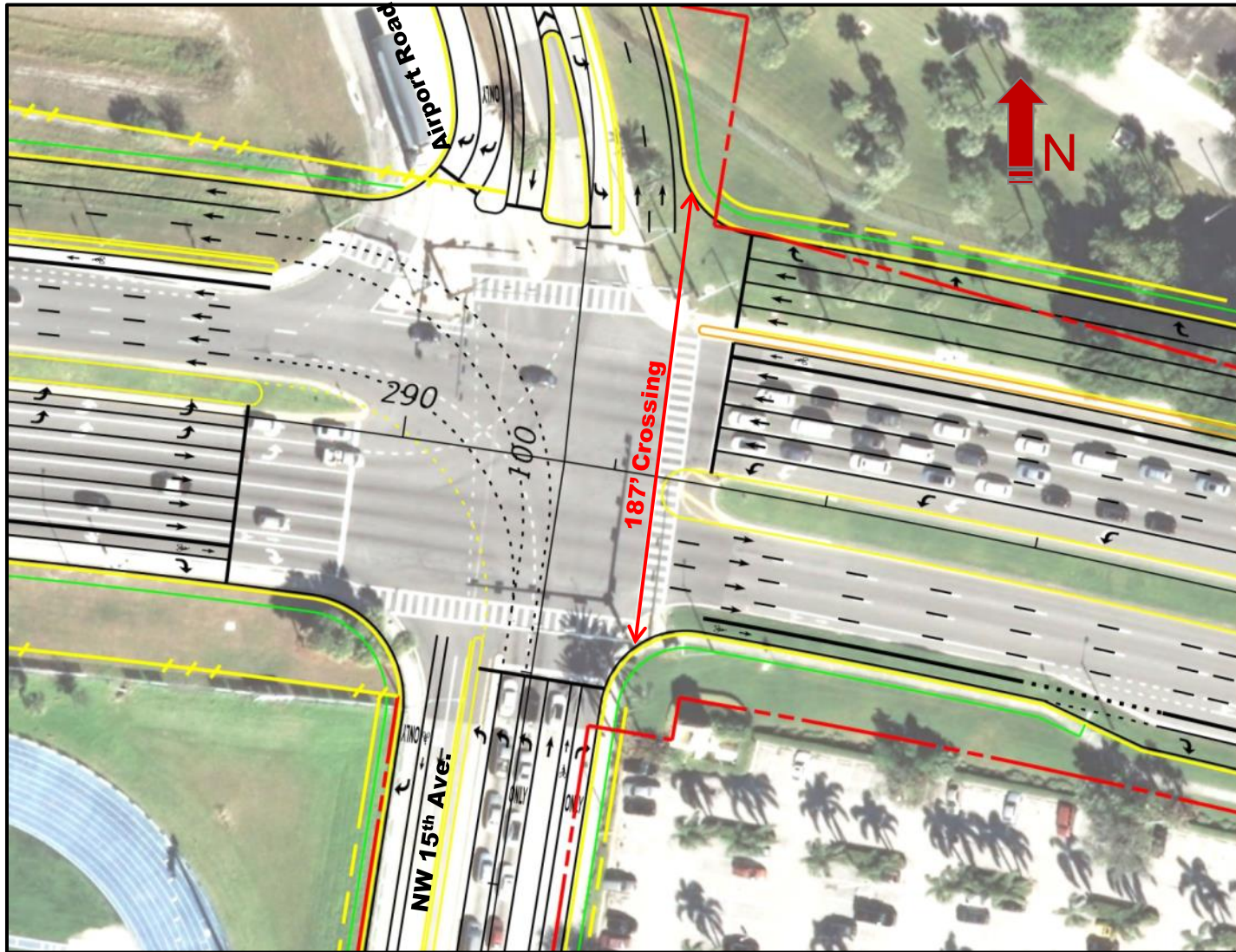


Preliminary Design Concept

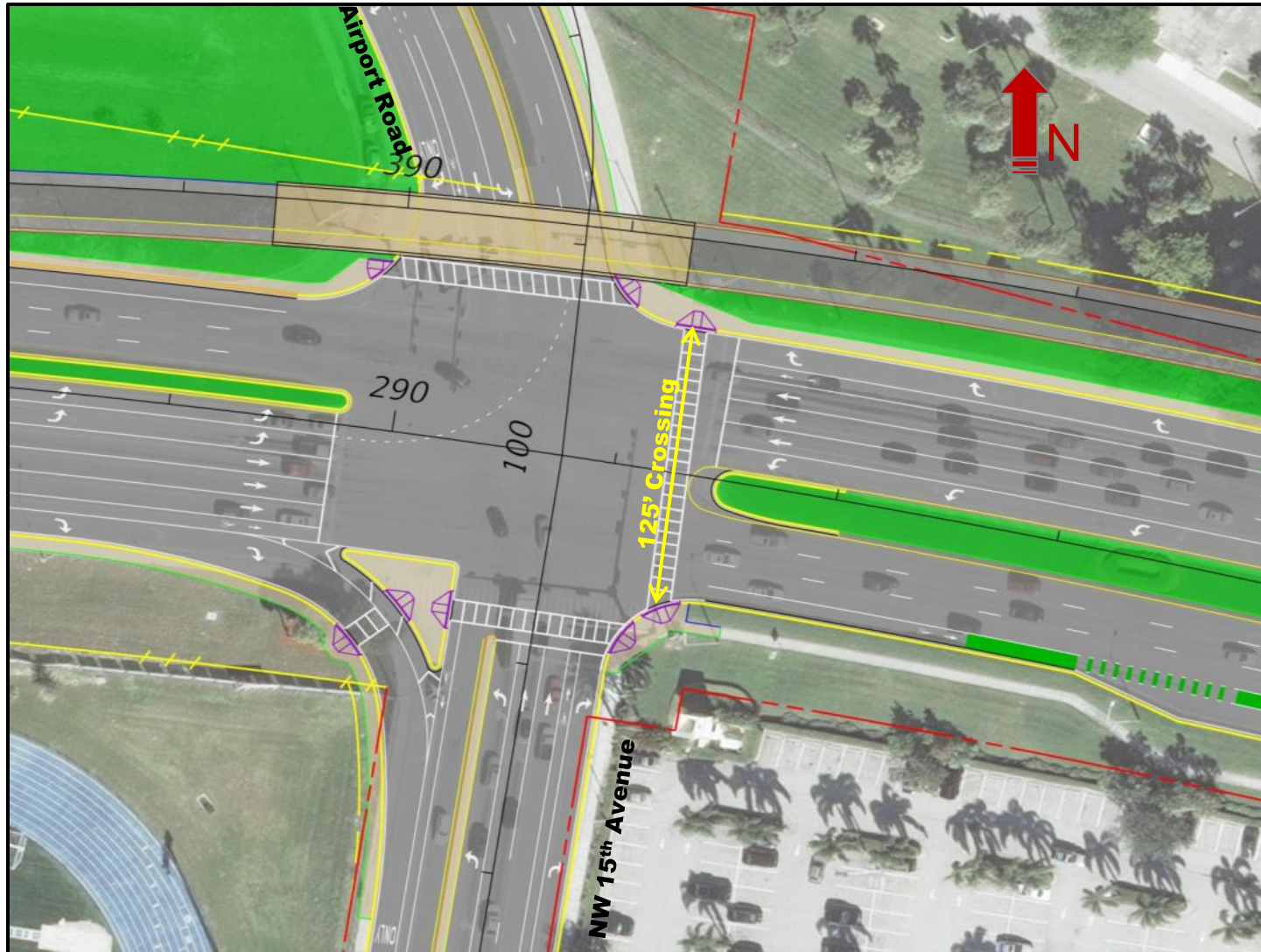


I-95 Managed Lanes Typical Section
(Underpass at Glades Road)

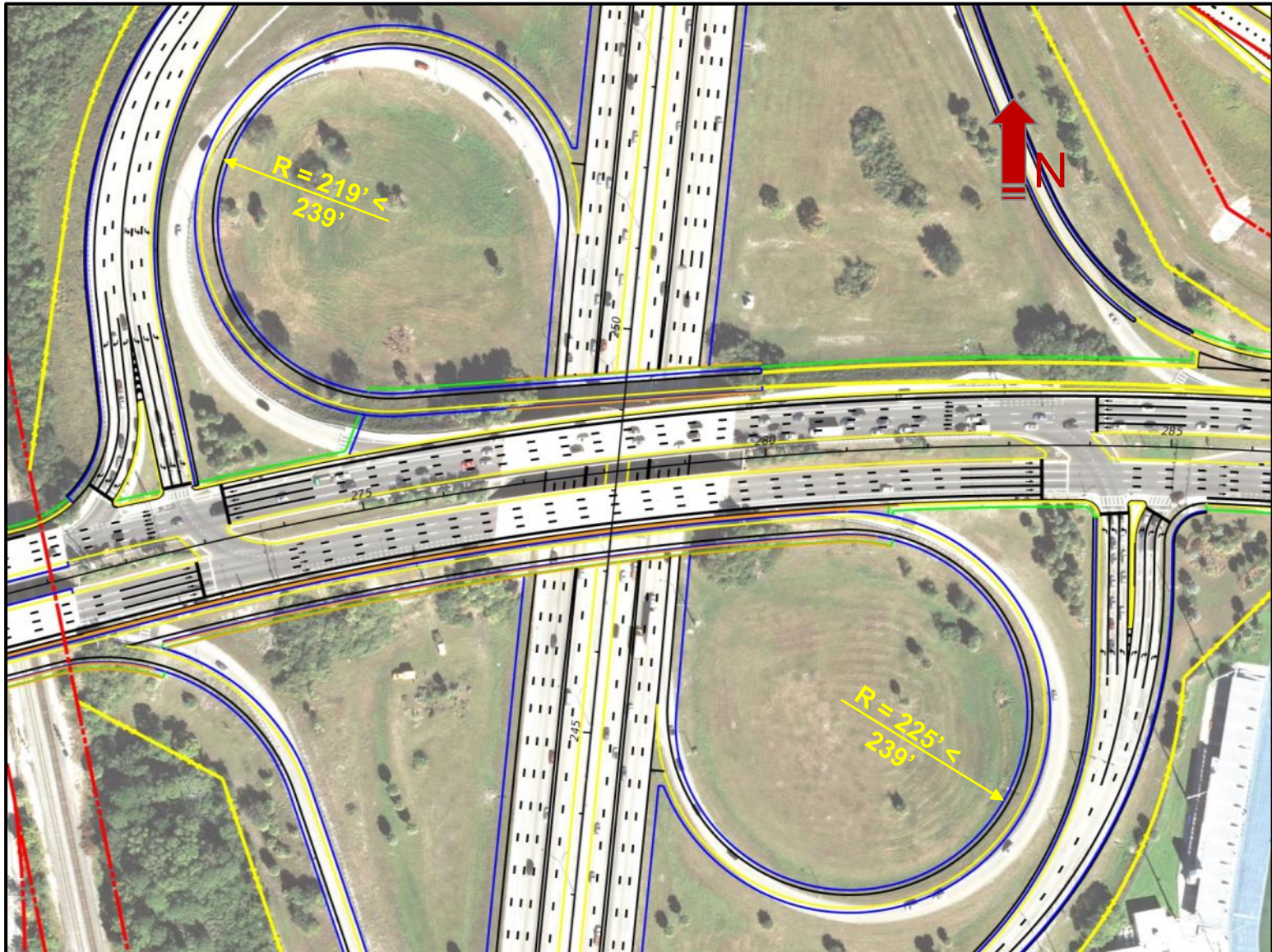
Airport Road Intersection



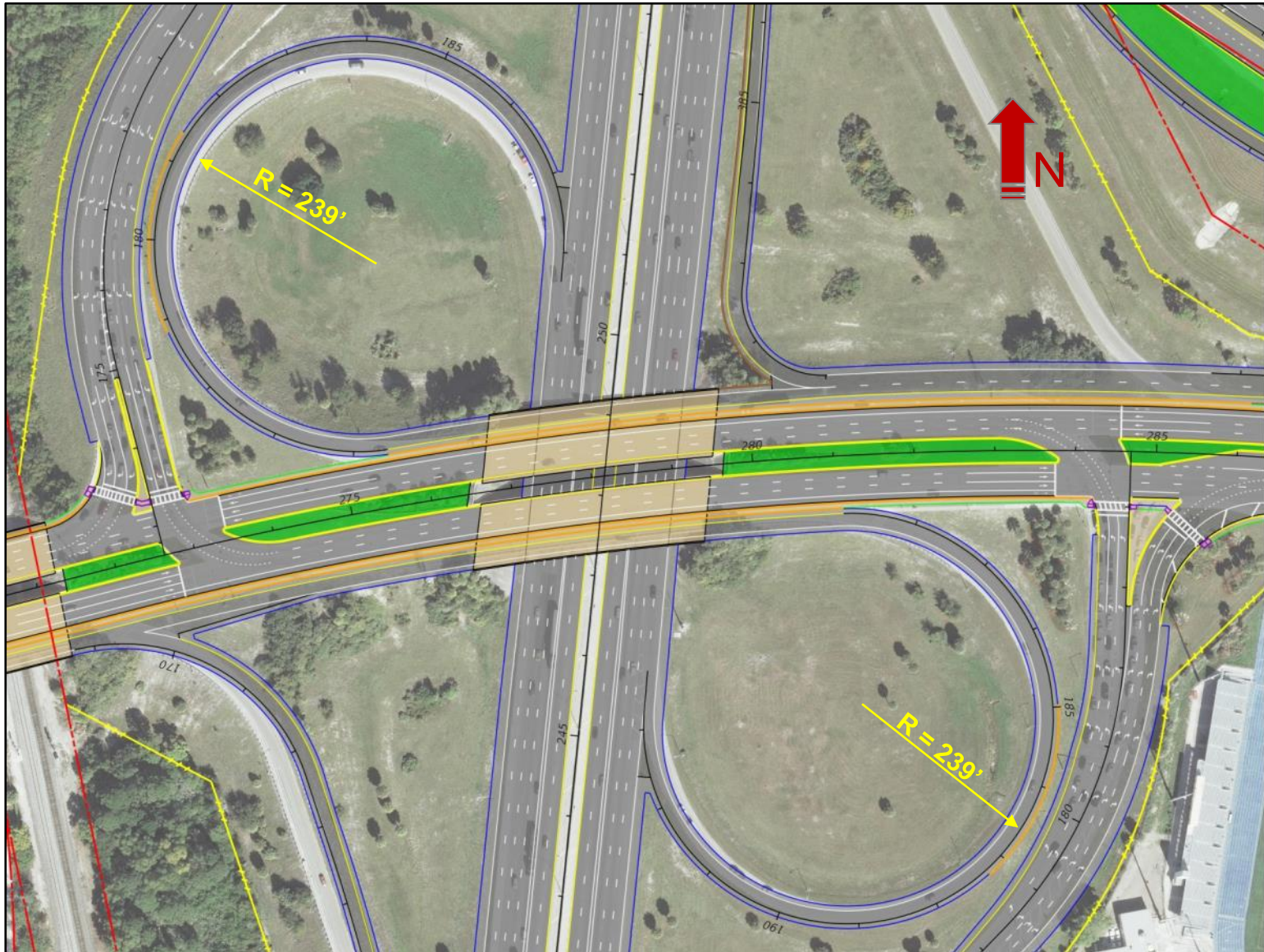
Airport Road Intersection



Loop Ramp Geometry



Loop Ramp Geometry



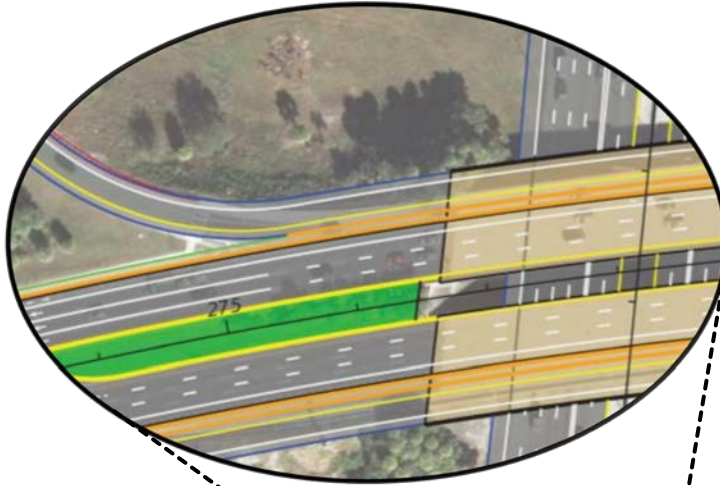
Existing Bicycle & Pedestrian Ramp Treatment



- Four Bicycle and Four Pedestrian Conflict Points with Vehicles at Free-Flow Ramp Terminals on Vertical and Horizontal Curves.



Preliminary Design Concept Bicycle & Pedestrian Ramp Treatment

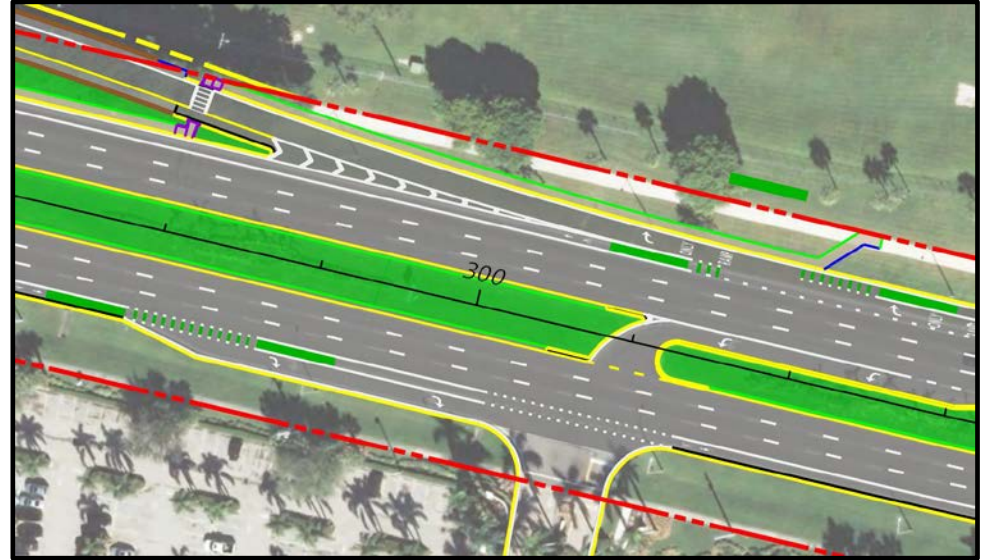


- No Bicycle or Pedestrian Conflict Points with Vehicles at the Free-Flow Ramp Terminals on Vertical and Horizontal Curves.

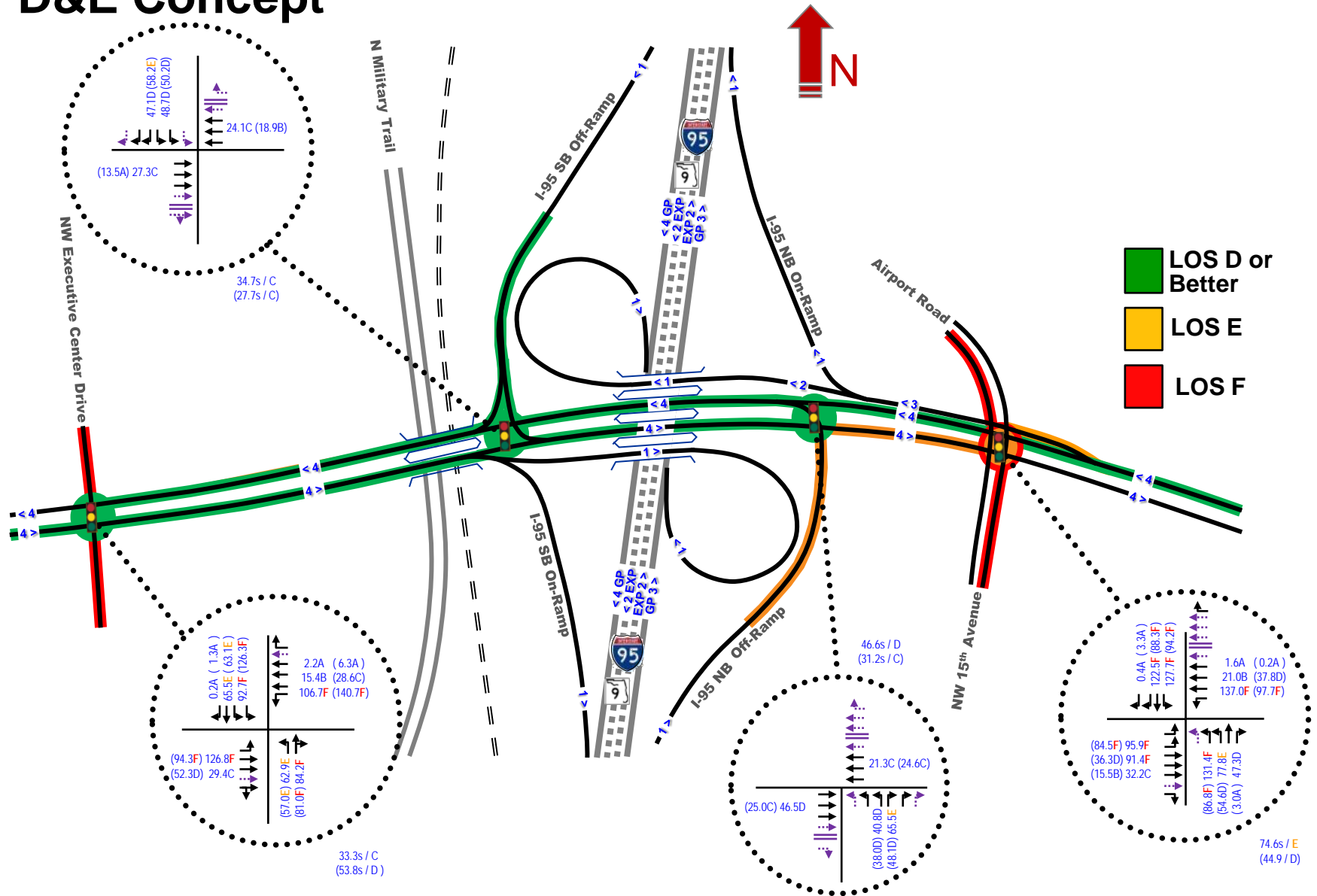


Preliminary Design Concept Bicycle & Pedestrian Ramp Treatment

- Introduces Green Bike Lanes at Decision Points

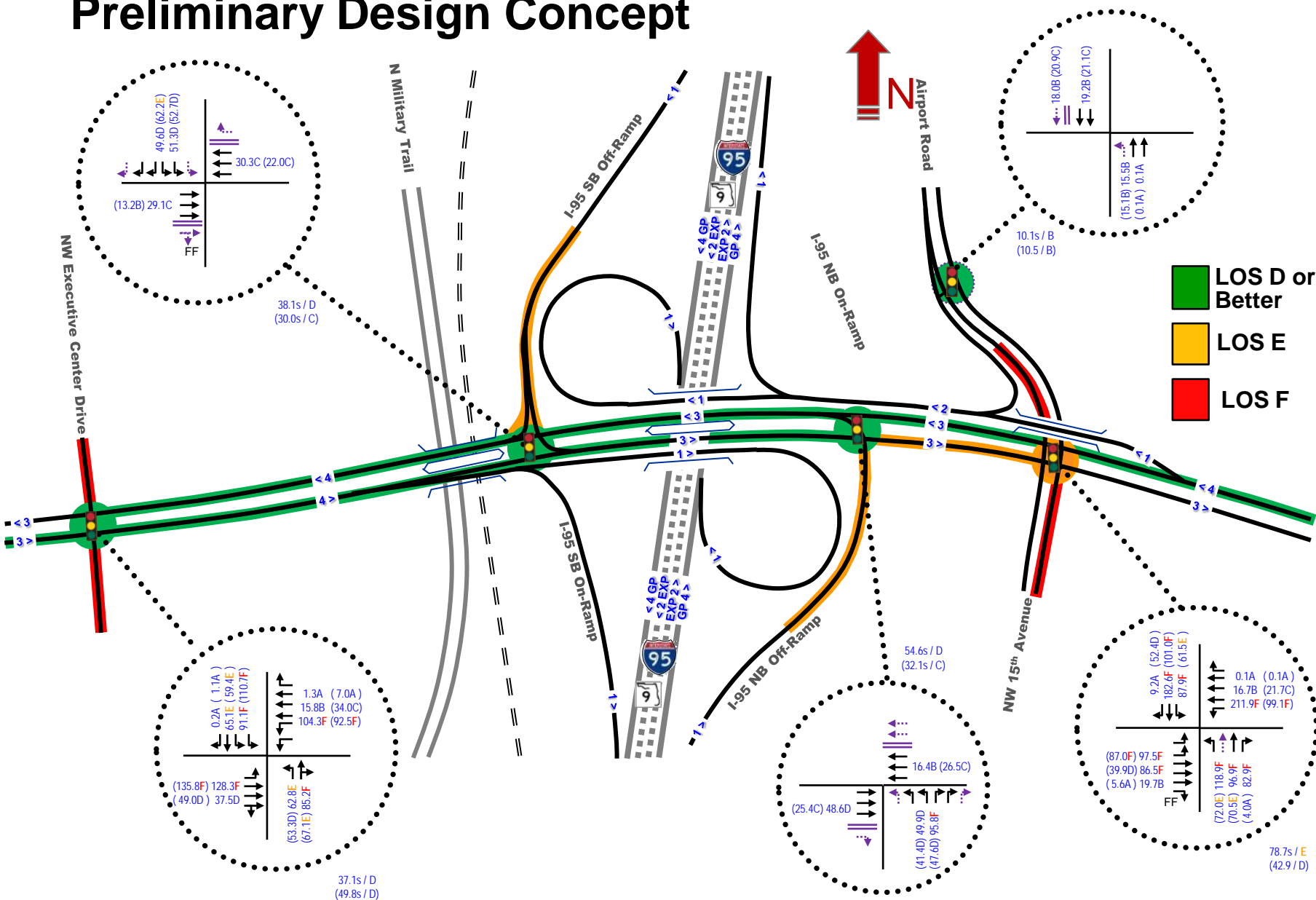


PD&E Concept



Future 2040 PD&E Build Condition

Preliminary Design Concept



Future 2040 Build Condition

Glades Road Looking West at Airport Rd.



Glades Road Looking West at Airport Rd.



Glades Road Looking NW at Airport Rd.



Glades Road Looking NW at Airport Rd.



SR-9/I-95 @ Glades Road

FM No. 412420-4-32-01